



Documentation for WinTuning 7 version 2.xx

Last modified 03/12/2012

2011-2012 © CWTuning Software

Content

Introduction	6
Features.....	7
Where can I download WinTuning 7.....	8
First run	9
Main window	10
WinTuning 7 Utilities.....	11
Hardware	13
Security.....	15
Autoshutdown.....	18
Check Disk	21
Internet Optimization.....	23
Loading Configuration	25
Startup Manager	27
Boot Manager	31
Software Updates.....	33
Uninstall Manager	37
System CleanUp	40
Rename Files	46
Data Recovery	49
Disk Space Analyzer	53
Desktop.....	57
Window	59
Start Menu and Taskbar.....	61
Explorer	63
Context Menu	65
Control Panel Items Manager	67
System Information	69
Clipboard Monitor	71
Memory Monitor	73
Windows 7 Utilities	75
System	75
Reliability and Performance Monitor	76
Task Scheduler	76

Task Manager	76
Registry Editor.....	76
System Configuration Utility.....	76
Device Manager.....	76
Computer Management	76
Services.....	76
Event Viewer	77
Group Policy.....	77
Local Users and Groups.....	77
System Information	77
Memory Diagnostics Tool.....	77
Support Diagnostic Tool.....	77
Windows 7 Features	77
Command Prompt.....	77
Resource Monitor	78
System Repair Disc Creator.....	78
Problem Steps Recorder	78
Windows 7 Mobility Center	78
ClearType Text Tuner	78
Display Color Calibration.....	78
Display languages installer.....	78
Device Pairing Wizard.....	78
Printer Migration Tool.....	78
Control Panel	78
<i>Security</i>	79
Windows 7 Defender	79
System Restore	79
Backup Status and Configuration	79
Securing Account Database.....	79
Local Security Settings	79
Encrypting File System (EFS)	79
Certificates.....	79
User Accounts Manager	80
<i>Disk</i>	80
Disk defragmentation	80
Disk Management.....	80

Disk Cleanup	80
Check disk	80
DiskPart	80
<i>Files</i>	80
Windows 7 Easy Transfer.....	80
System File Checker.....	81
File Signature Verification	81
FAT To NTFS (without data loss).....	81
Icacs.....	81
File Compare	81
Make CAB File.....	81
<i>Network</i>	81
Internet Explorer.....	81
Windows 7 Remote Assistance	81
Sync Center.....	81
Create Shared Folders.....	81
Remote Desktop Connection	82
Windows 7 Update	82
Shared Folders	82
Ping.....	82
Route.....	82
NS LookUp.....	82
Finger.....	82
Netstat.....	82
Commands Scheduler (AT)	83
Net	83
IPConfig.....	83
GetMAC	83
<i>Other</i>	83
Windows 7 Activation	83
Sticky Notes.....	83
Snipping Tool	83
DPI Scaling.....	83
DVD Maker	83
Paint.....	84
Calculator.....	84

Magnifier	84
Sound Recording	84
On-Screen Keyboard	84
Narrator.....	84
Private Character Editor	84
Character Map	84
Create self-extracting package.....	84
Result Set of Policy	84
Windows 7 Management Infrastructure (WMI)	85
ODBC Data Source Administrator	85
Windows 7 Script Host Settings	85
Windows 7 Status	86
Reset tweaks	87
System restore.....	89
Error report	90
Software settings.....	92
Icon in the Notification area (tray)	94
Password recovery	95
Software modes	96
Frequently asked questions (FAQ)	97
How to get the license for WinTuning 7	99
Contacts	102
Customer Involvement Program.....	103
Terms of Use	104

Introduction

WinTuning 7 is designed to configure and optimize Windows 7, check the updates of installed programs, get access to more than 80 public and hidden tools of Windows 7, configure the boot, remove junk files from your hard drive, obtain information about your system, diagnose and troubleshoot operating systems and more.

The program allows you to configure the boot / shutdown process, hardware parameters, speed up the Internet connection, change the settings of Windows 7 elements: Desktop, Context menus, Explorer, Taskbar, Start Menu and windows. The program offers tools to quickly rename files by mask, disk scanning, and automatic shutdown after a specified period of time, edit boot screen, remove unnecessary programs and junk files, check for updates for installed programs. Includes Clipboard and memory monitoring, allows get access to the information about your operating system, and to numerous built-in utilities of Windows 7

Each tweak has textual tips, and some of them have the image-tips also. It allows you to see the tweak in action. The program search you hard drive for unnecessary files (cache of browsers, logs, shortcuts of recent documents, temporary files, etc.) makes it possible to free up space on your hard drive. In the utility "Startup Manager" you can safely (it is possible to change it back) disable unnecessary programs that can slow the Windows 7 loading process down. The program contains the database of Windows 7 utilities, with detailed descriptions and the ability to run from the single window (more than 80 utilities are in the database)

WinTuning 7 allows you to optimize your system, your time and your life.

Features

- + Checking for updates for programs installed on your computer;
- + Accessing to more than 80 public and hidden tools of Windows 7;
- + Getting a few gigabytes of free space on your hard drive;
- + Safely removing Internet traces (cache, cookies, browser history);
- + Increasing security level;
- + Managing startup programs;
- + Changing the hundreds of Windows 7 settings;
- + Picture-tips (screenshots) for tweaks;
- + All tweaks are designed for Windows 7 specifically;
- + Detailed and simple tips for beginners and experienced users.

Where can I download WinTuning 7

You can download WinTuning 7 from the official website CWTuning.com, on the download page: <http://cwtuning.com/windows-7-optimization-download.htm>.

Supported operating systems:

- Windows 7 Ultimate x32;
- Windows 7 Ultimate x64;
- Windows 7 Enterprise x32;
- Windows 7 Enterprise x64;
- Windows 7 Professional x32;
- Windows 7 Professional x64;
- Windows 7 Home Premium x32;
- Windows 7 Home Premium x64;
- Windows 7 Home Basic* x32;
- Windows 7 Home Basic* x64;

System requirements are the same as the system requirements of any of these operating systems. The screen resolution should be at least 600 pixels wide and 410 pixels high.

First run

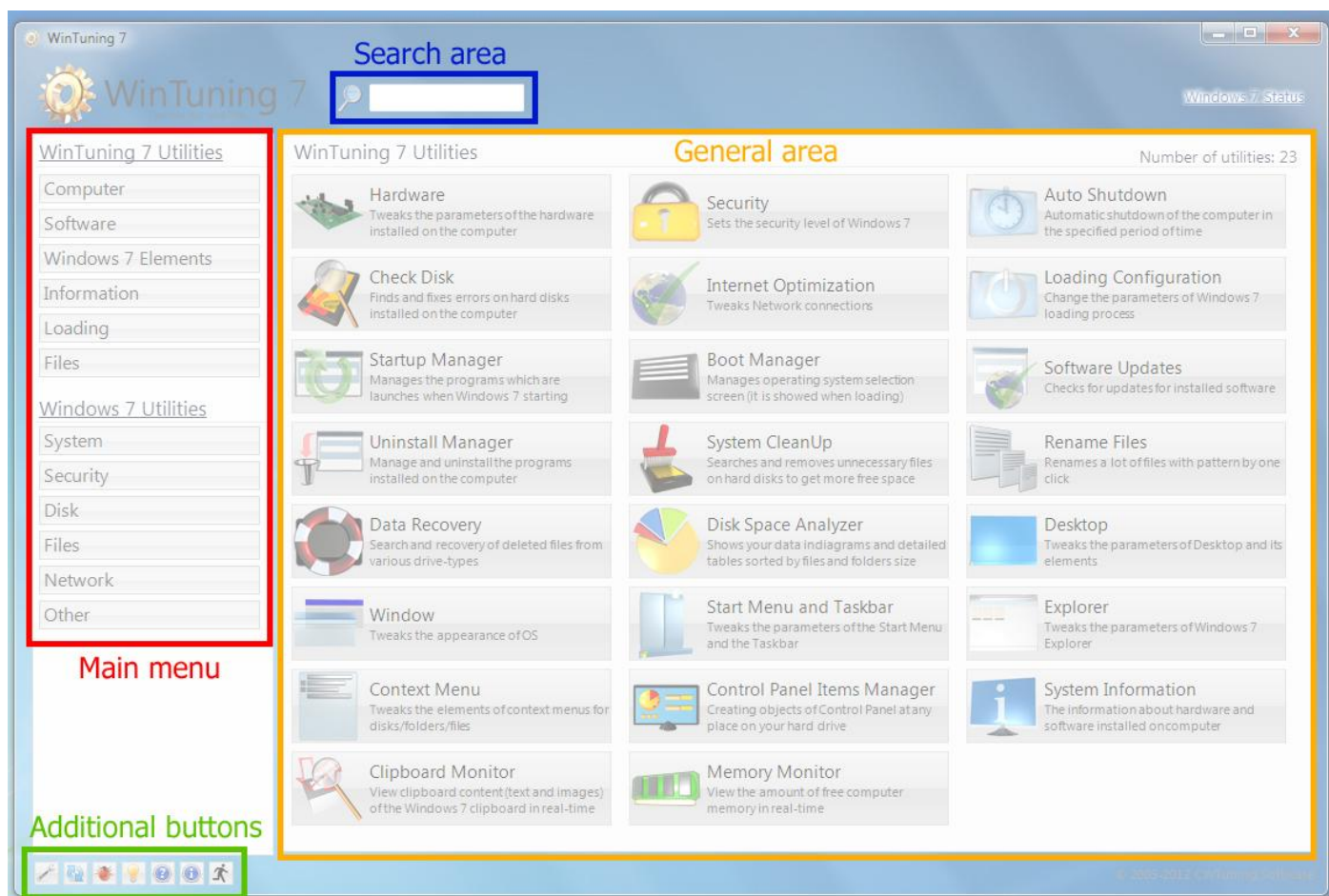
You will see Welcome message after installing the program at its first launch. In this window you can register the program. It displays the number of remaining days of trial period (total of 30 days - that, in our opinion, is enough to get acquainted with the program and its main functions). As soon as it will be set to 0 days on this counter, it will not be impossible to run the program and you will have to purchase the license (see "[How to get the license for WinTuning 7](#)" of this guide), or you have to refuse further use.

After the first starting the program displays a warning message about the need to create a system restore point. It is strongly recommended you to do so. In the case of system failure you'll be able to easily restore your operating system (see "[System Restore](#)" in this reference).

Main window

The main window is divided into 4 areas (see figure):

1. Main menu: buttons to select a section;
2. General area: buttons to start utilities;
3. Search area: the field for search string;
4. Additional buttons to manage the program.

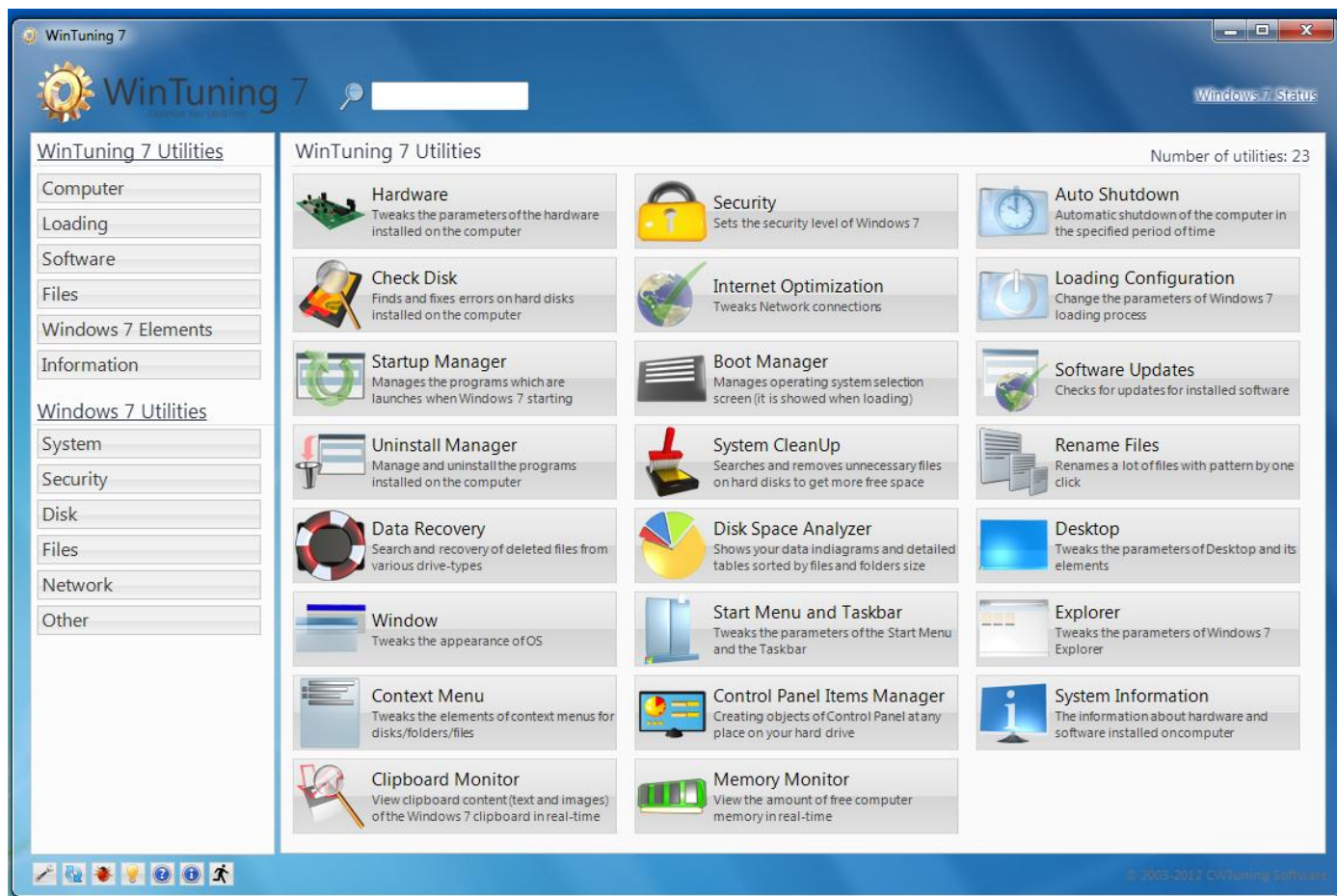


To run the utility that is the part of WinTuning 7, please select the program section from the main menu and then press the button of the utility (in the General area). After this, you will see the main window of the utility. To get more information about each utility, please refer to the relevant section of this reference.

From the main window, start typing the name of any utility, or the name of the executable file to start the search: the cursor is automatically placed in the search area, and only those utilities, which correspond to the search string, will be displayed in the main area.

WinTuning 7 Utilities

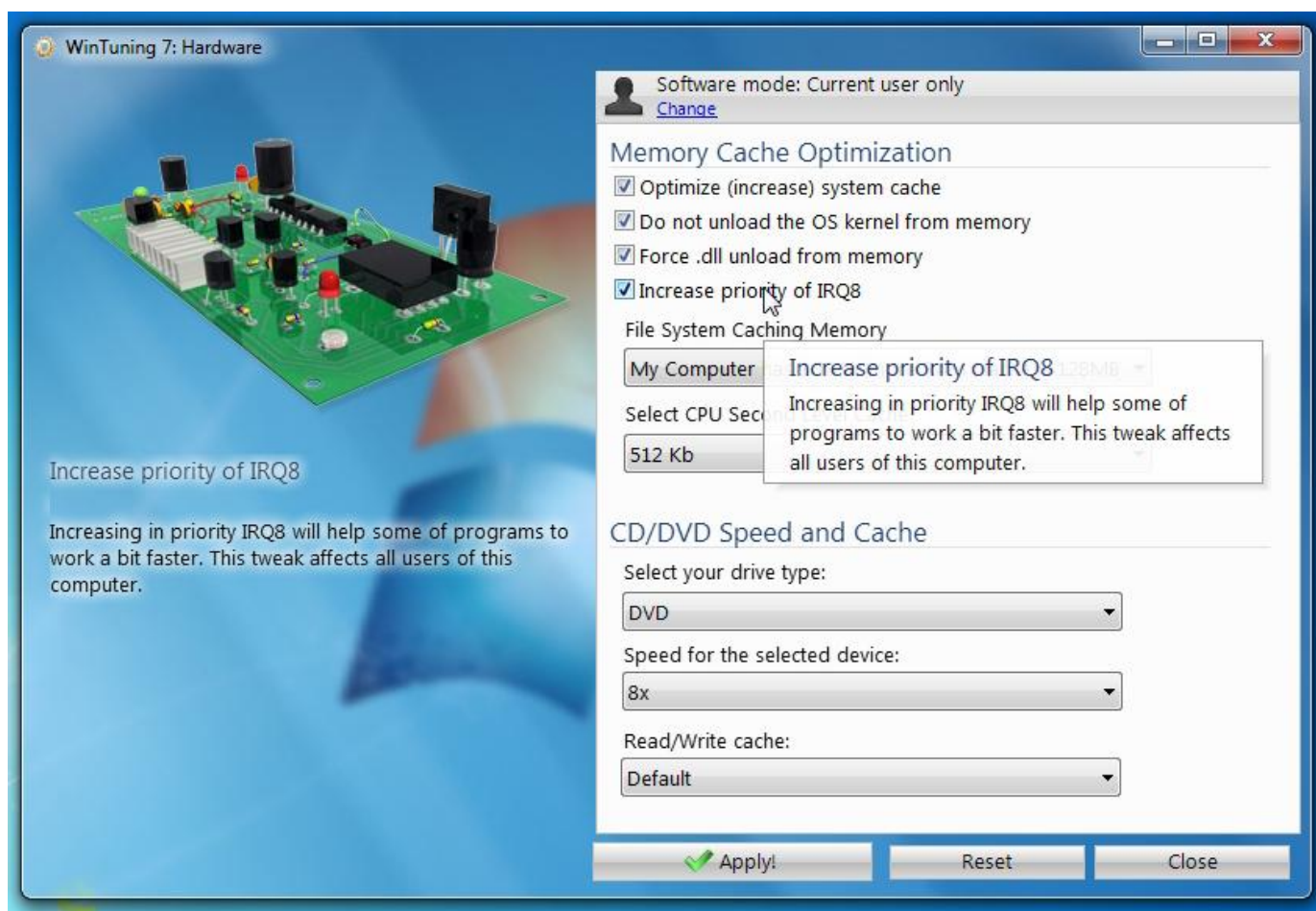
All utilities included to the program WinTuning 7 are divided into groups (sections). Section buttons for WinTuning 7 or Windows 7 Utilities are in Main menu on the left. To display the utilities you need to click on one of that buttons on the main menu. To display all WinTuning 7 utilities click on "WinTuning 7 Utilities". To display all Windows 7 utilities, click on "Windows 7 Utilities". The list of all utilities of Windows 7 is in the [so-named section](#) of this manual.



- ➔ Computer
 - ▷ [Hardware](#)
 - ▷ [Security](#)
 - ▷ [Autoshutdown](#)
 - ▷ [Check Disk](#)
 - ▷ [Internet Optimization](#)
- ➔ Loading
 - ▷ [Loading Configuration](#)
 - ▷ [Startup Manager](#)
 - ▷ [Boot Manager](#)
- ➔ Software
 - ▷ [Software Updates](#)
 - ▷ [Uninstall Manager](#)
- ➔ Files

- [System CleanUp](#)
- [Rename Files](#)
- ➡ Windows 7 Elements
 - [Desktop](#)
 - [Window](#)
 - [Start Menu and Taskbar](#)
 - [Explorer](#)
 - [Context Menu](#)
 - [Control Panel Items Manager](#)
- ➡ Information
 - [System Information](#)
 - [Clipboard Monitor](#)
 - [Memory Monitor](#)

Hardware



Configures the hardware settings of your computer. There are all available options for customization at the right side of the window. Configuring is made by setting up or removing flags (ticks) or by selecting the necessary option from a dropdown list. When the mouse pointer move to any checkbox or combo box a tip is appears at the left of the window, as well as a pop-up help text near the mouse pointer. In some cases a picture tip is displayed instead of the logo on the top left. With this type of tips you'll be able to see what is going to be changed in your OS after the tweak is applied. You can restore the original settings with built-in OS options recovery system. To start the OS Tweaks Reset System, click "Reset" in the options window. More information about the OS Tweaks Reset System, see "[Reset tweaks](#)" and "[System Restore](#)" sections in this guide.

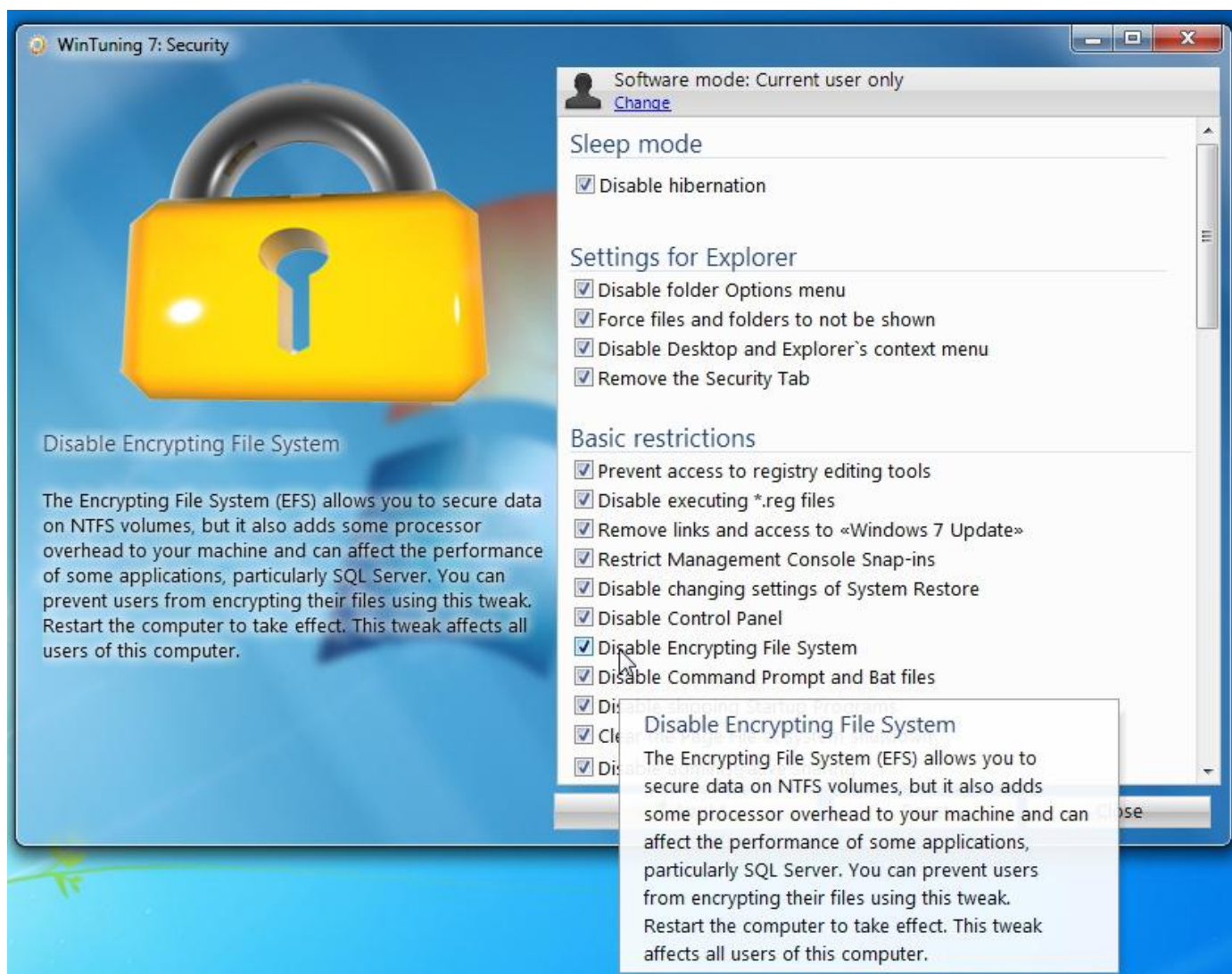
Note: By default, all options affect only the active user, i.e. the user who is currently logged into the system. The program doesn't change any parameter of other users. To change parameters of all users who work with this computer (not just active user, but all of them), please click on «Software mode» button at top of the window. As you have set the working mode to «All users», changes made in WinTuning 7 will affect the parameters of all users. To change this politics back you must select «Current user only» mode. Please note that some of tweaks affect the parameters of all users (or active user only), regardless of which mode is selected. The parameters like that have special comment at the end of its tips.

This utility contains the following tweaks:

File System Caching Memory

Optimize (increase) system cache
Select CPU Second Level Cache
Force .dll unload from memory
Increase priority of IRQ8
Do not unload the OS kernel from memory
Select your drive type
Speed for the selected device
Read/Write cache

Security



Configures the security level of your operating system. There are all available options for customization at the right side of the window. Configuring is made by setting up or removing flags (ticks) or by selecting the necessary option from a dropdown list. When the mouse pointer move to any checkbox or combo box a tip is appears at the left of the window, as well as a pop-up help text near the mouse pointer. In some cases a picture tip is displayed instead of the logo on the top left. With this type of tips you'll be able to see what is going to be changed in your OS after the tweak is applied. You can restore the original settings with built-in OS options recovery system. To start the OS Tweaks Reset System, click "Reset" in the options window. More information about the OS Tweaks Reset System, see "[Reset tweaks](#)" and "[System Restore](#)" sections in this guide.

Note: By default, all options affect only the active user, i.e. the user who is currently logged into the system. The program doesn't change any parameter of other users. To change parameters of all users who work with this computer (not just active user, but all of them), please click on «Software mode» button at top of the window. As you have set the working mode to «All users», changes made in WinTuning 7 will affect the parameters of all users. To change this politics back you must select «Current user only» mode. Please note that some of

tweaks affect the parameters of all users (or active user only), regardless of which mode is selected. The parameters like that have special comment at the end of its tips.

This utility contains the following tweaks:

- Disable hibernation*
- Turn off user tracking*
- Do not keep history of recently opened documents*
- Clear history of recently opened documents on exit*
- Disable administrative sharing*
- Disable network access to the registry*
- Enable User Account Control (UAC)*
- Disable Welcome Center on logon*
- Disable Auto Logon Shift override*
- Disable Windows Media Center*
- Remove «Switch User» item*
- Remove «Lock this Computer» item*
- Restrict showing the last Username*
- Remove «Change a password» item*
- Remove links and access to «Windows Update»*
- Turn Windows 7 features on or off*
- Clear the Page File at system shutdown*
- Disable the Sound Recorder*
- Remove «Log off» item*
- Change User Account Control (UAC) settings*
- Prevent access to registry editing tools*
- Floppy Drives: Deny write access*
- Force files and folders to not be shown*
- Floppy Drives: Deny read access*
- Disable Encrypting File System*
- Disable Windows Update*
- Remove «Start Task Manager» item*
- Display information about previous logon*
- All Removable Storage classes: Deny all access*
- Disable Auto Updates Service*
- Disable Command Prompt and Bat files*
- Disable changing settings of System Restore*
- Disable executing *.reg files*
- Enable Ctrl + Alt + Delete Secure Logon*
- Disable skipping Startup Programs*
- Restrict Management Console Snap-ins*
- Removable Disks: Deny write access*
- CD and DVD: Deny write access*
- Remove the Security Tab*
- Removable Disks: Deny read access*
- CD and DVD: Deny read access*
- Disable folder Options menu*

Disable Control Panel

Disable Desktop and Explorer`s context menu

Disable shutdown button

Change the restarting prompting interval

Change the updates detection frequency

Autoshutdown



You can use Autoshutdown to turn off your computer automatically after the specified period of time. You can also reboot it and log off the system.

To run the timer:

1. Choose one of three actions, which will be performed when time is up:
 - Turn off – the computer will be turned off;
 - Reboot – the computer will be rebooted;
 - Log off – log off the OS.

Before an action above is performed all running applications are forced to be closed, so be careful: periodically save all data when using this function.

2. Set «Hours» and «Minutes» of the time interval, through which the action will be launched. While you set these fields you can see «Estimated time».
3. If desired, you can define additional parameters of protection from forced disabling of the timer. This may be required when the timer is set for children who should not affect it, and the time they spent on the computer / video games. If you set all four checkboxes, you'll be able to deactivate the timer with the program only and only if you know the password:
 - Set a password to disable the timer – if you set this checkbox you need to enter the password to deactivate the timer (but the utility can easily be closed, so see checkboxes below);

- Prevent access to registry editing tools – this setting restricts to run Registry Editor (Regedit) utility (the part of Windows 7). Through the Regedit a user can enable to run Windows Task Manager (see below).;
 - Hide the program from the Tray (Notification area) – by default, «Autoshutdown» is placed to the Tray, where it can be accessed by double clicking on its icon. However, this icon can be hidden from this area, so that nothing would indicate that the program is running.
 - Disable the Task Manager (Ctrl + Alt + Delete) – after enabling this checkbox and running of the timer the combination Ctrl + Shift + Esc will be disabled and «Task Manager» will not be run when pressing this combination. Otherwise when you pressing this combination «Task Manager» is run and a user can terminate the program.
4. Click "Run". After that, the timer will be run. You can't change any of parameters when the timer is ticking. In the central part of the window you can see the area with the time before selected action will be performed (shutdown, restart or log off).

When the time is running you can perform one of the following operations:

1. Disable timer («Stop» button) – timer will be disabled and the values becomes default (to the values of «Hours» and «Minutes» fields). You'll be able to edit any of parameters, and «Pause» and «Hide the window» buttons will be disabled.
2. Set the timer to pause («Pause» button) – freeze the timer, values will be saved to the Registry. Even you close the utility the values are not be lost. After you pressing «Continue» button (it is shown instead of «Pause» button in case of pause) the time becomes unfreeze and start from the time it was paused. «Estimated time» will be recalculated.
3. Hide the window to the Notification area («Hide the window» button) – hides «Autoshutdown» window to the Notification area (tray, near the system clock). You can restore the window by double clicking on the icon in the tray. A tip with the remaining time is shown when hovering on the icon of the utility in the tray.

Main menu (at the top) of the «Autoshutdown» window contains the following items:

➡ Main

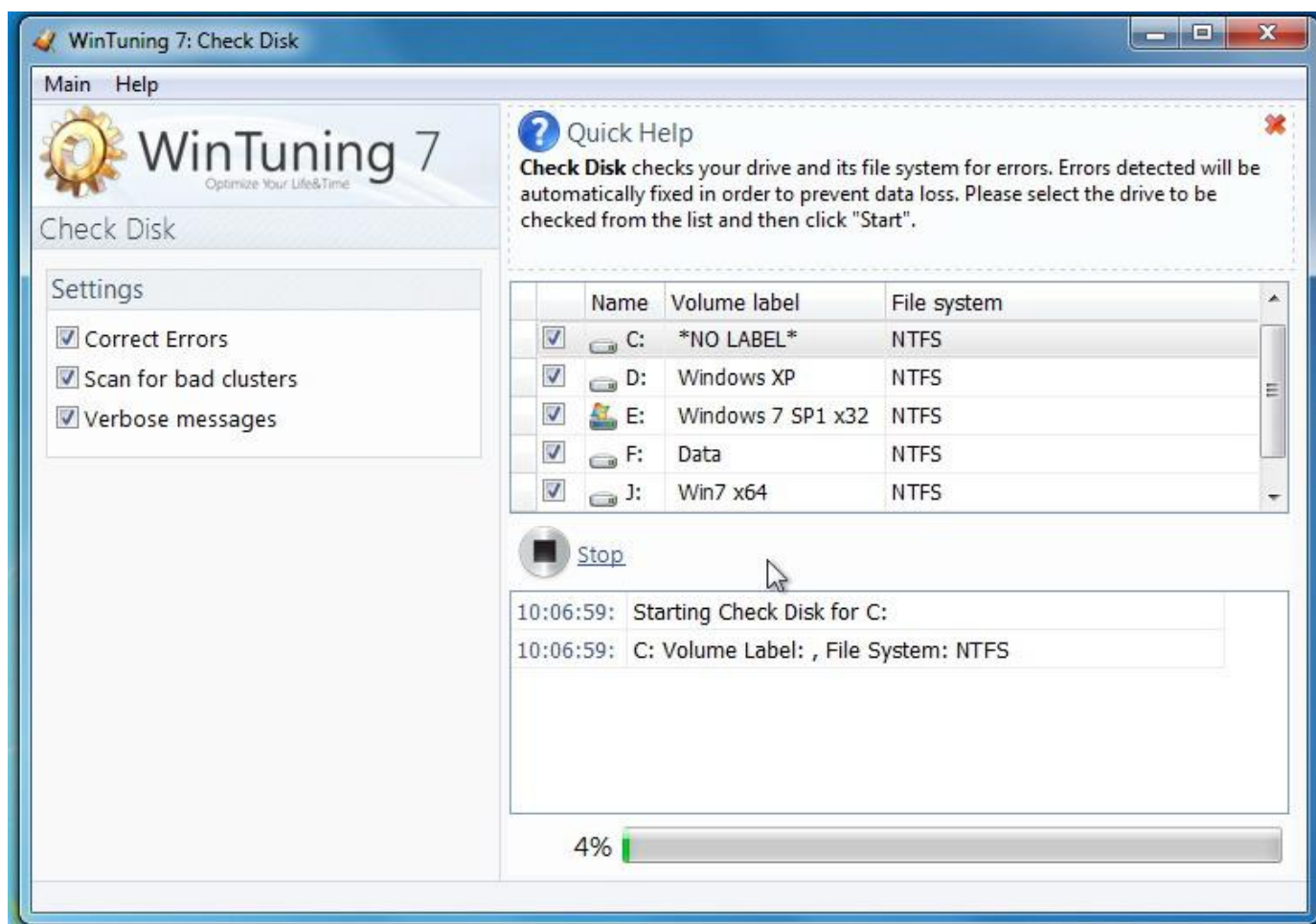
- ▶ *Run/Stop* (depends on the state of the timer) – launches / stops the timer. Similarly to performed actions of «Run» and «Stop» buttons respectively.
- ▶ *Pause/Continue* (depends on the state of the timer) – pauses or enables (after the pause) the timer. Similarly to performed actions of «Pause» and «Continue» buttons respectively.
- ▶ *Hide the window* – hide the window to the Notification area. Hides «Autoshutdown» window to the Notification area (tray, near the system clock). You can restore the window by double clicking on the icon in the tray. A tip with the remaining time is shown when hovering on the icon of the utility in the tray. Similarly to performed action of a «Hide the window» button.
- ▶ *Found an error?* – show a window «[Bug \(error\) report](#)». If you have found a critical error or a small bug in WinTuning 7, please let us know. You will help us to find and fix the error. Let's make WinTuning 7 better... together!

- *Exit* – close the window of the utility.

➔ **Help**

- *View help* – open help file.
- *Quick help* – show/hide the so called «Quick help». Quick help is the area at the main window of a utility in WinTuning 7. You can find short description of the utility in this area. It help you to get started with the utility shortly without opening help file.
- *Home page* – open home page of WinTuning 7 in your default browser.
- *About* – open «About» window, where you can find the name and version of the utility you are currently using.

Check Disk



Check Disk is checking your drive and its file system for errors. Errors detected will be automatically fixed in order to prevent data loss. The list of all virtual disks in the OS is displayed at the top of main window. Letter, label and file system (NTFS, FAT32 etc) are displayed for each disk.

Before scanning in «Options» area at the left you can set up the parameters of the scan process:

- **Correct Errors** – if you check this checkbox, the program will fix all found errors, otherwise you just see the errors without fixing.
- **Scan for bad clusters** – if you enable this checkbox, the program will search for special type of hard drive errors: searching for bad clusters. This type of error is highlighted particularly because of the fact that finding bad clusters is very time consuming. Therefore, turn this setting only when it is really necessary.
- **Verbose messages** – show additional information about the scan.

To start scanning please choose disk(s) from the list (check necessary checkboxes) and press the "Start" button. All selected disks will be checked one by one. All found errors will be automatically fixed (if you have checked the "Correct Errors" checkbox in «Options» area). At the bottom of the window you can see the scanning progress for current disk. The scan will be end when all disks are searched for errors. The program will not check unselected disks.

To terminate the scan please press «Stop» button.

NOTE: after you press «Stop» button the scan of current disk will not stop immediately. You have to wait when the current disk be scanned and only after that you can exit the Utility.

Main menu (at the top) of the «Check Disk» window contains the following items:

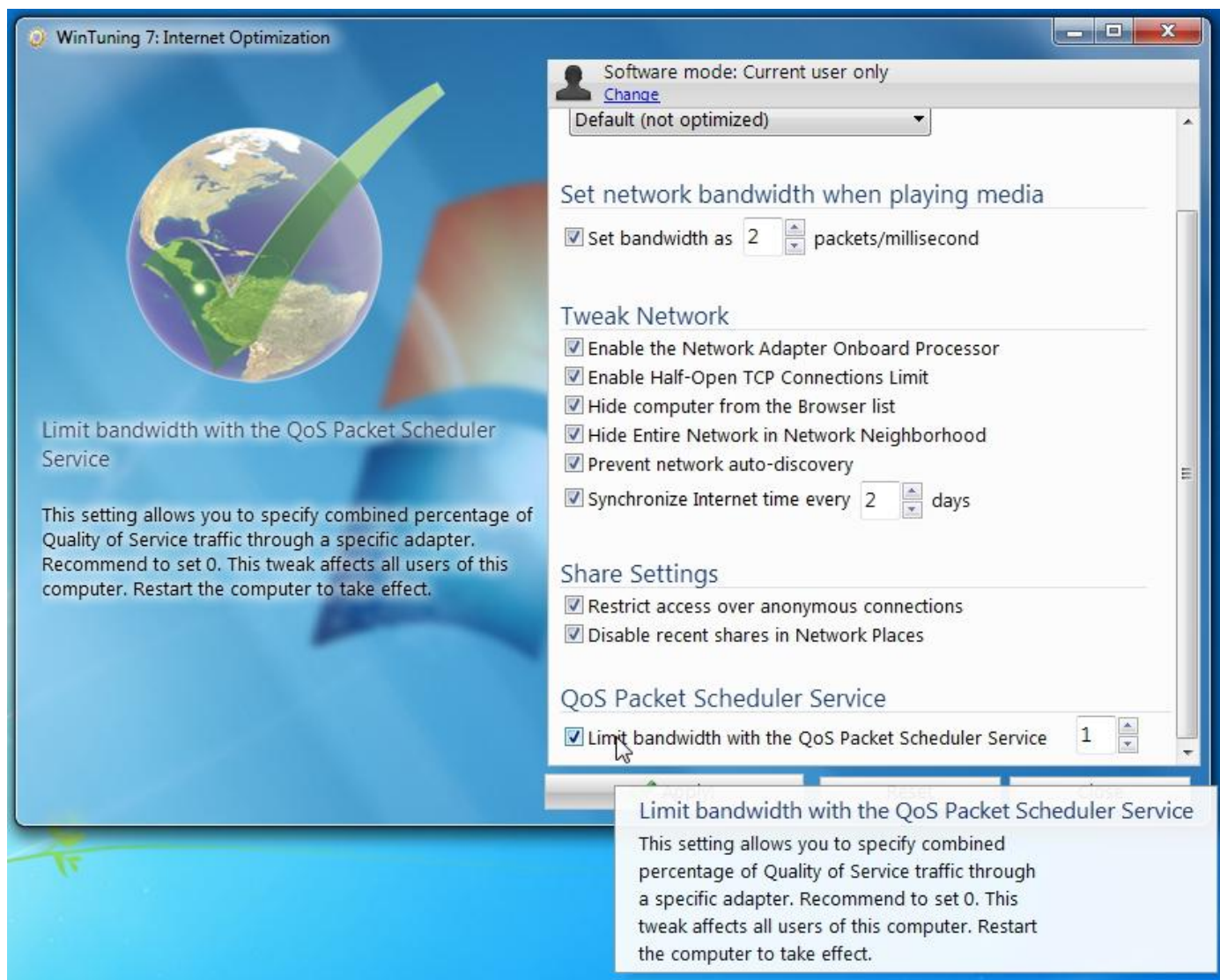
➡ Main

- ▶ *Start/Stop* (depends on the state of scan process) – starts or stops the scan process. Similarly to performed actions of «Start» and «Stop» buttons respectively.
- ▶ *Found an error?* – show a window «[Bug \(error\) report](#)». If you have found a critical error or a small bug in WinTuning 7, please let us know. You will help us to find and fix the error. Let's make WinTuning 7 better... together!
- ▶ *Exit* – close the window of the utility.

➡ Help

- ▶ *View help* – open help file.
- ▶ *Quick help* – show/hide the so called «Quick help». Quick help is the area at the main window of a utility in WinTuning 7. You can find short description of the utility in this area. It help you to get started with the utility shortly without opening help file.
- ▶ *Home page* – open home page of WinTuning 7 in your default browser.
- ▶ *About* – open «About» window, where you can find the name and version of the utility you are currently using.

Internet Optimization



Configures the Internet connection settings to get the highest speed. There are all available options for customization at the right side of the window. Configuring is made by setting up or removing flags (ticks) or by selecting the necessary option from a dropdown list. When the mouse pointer move to any checkbox or combo box a tip is appears at the left of the window, as well as a pop-up help text near the mouse pointer. In some cases a picture tip is displayed instead of the logo on the top left. With this type of tips you'll be able to see what is going to be changed in your OS after the tweak is applied. You can restore the original settings with built-in OS options recovery system. To start the OS Tweaks Reset System, click "Reset" in the options window. More information about the OS Tweaks Reset System, see "[Reset tweaks](#)" and "[System Restore](#)" sections in this guide.

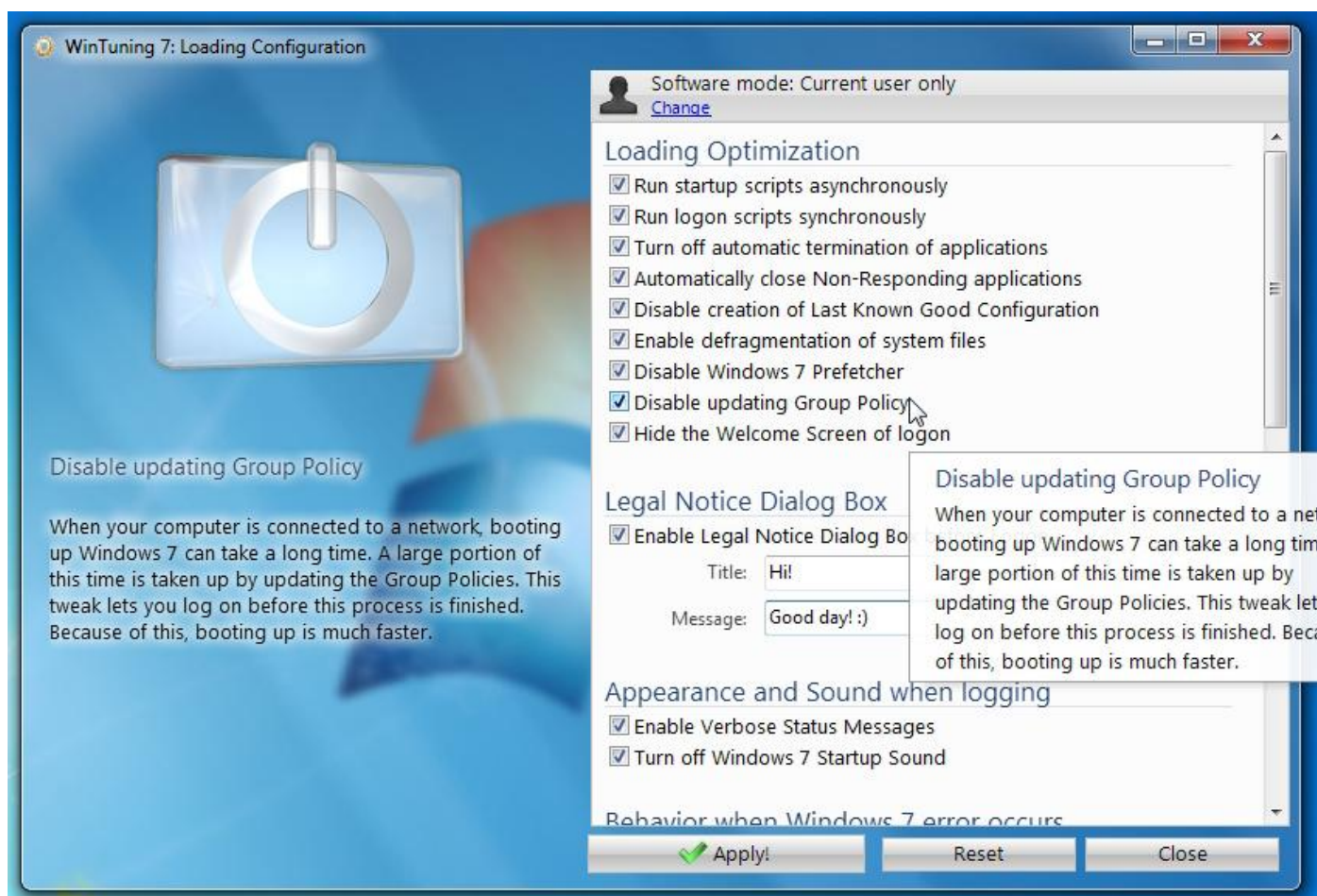
Note: By default, all options affect only the active user, i.e. the user who is currently logged into the system. The program doesn't change any parameter of other users. To change parameters of all users who work with this computer (not just active user, but all of them), please click on «Software mode» button at top of the window. As you have set the working mode to «All users», changes made in WinTuning 7 will affect the parameters of all users. To change this politics back you must select «Current user only» mode. Please note that some of

tweaks affect the parameters of all users (or active user only), regardless of which mode is selected. The parameters like that have special comment at the end of its tips.

This utility contains the following tweaks:

Internet connection optimization and speed-up
Enable the Network Adapter Onboard Processor
Set bandwidth as x packets/millisecond
Limit bandwidth with the QoS Packet Scheduler Service
Enable Half-Open TCP Connections Limit
Restrict access over anonymous connections
Synchronize Internet time every
Prevent network auto-discovery
Disable recent shares in Network Places
Hide Entire Network in Network Neighborhood
Hide computer from the Browser list

Loading Configuration



Configures the parameters of Windows 7 loading process. There are all available options for customization at the right side of the window. Configuring is made by setting up or removing flags (ticks) or by selecting the necessary option from a dropdown list. When the mouse pointer move to any checkbox or combo box a tip is appears at the left of the window, as well as a pop-up help text near the mouse pointer. In some cases a picture tip is displayed instead of the logo on the top left. With this type of tips you'll be able to see what is going to be changed in your OS after the tweak is applied. You can restore the original settings with built-in OS options recovery system. To start the OS Tweaks Reset System, click "Reset" in the options window. More information about the OS Tweaks Reset System, see "[Reset tweaks](#)" and "[System Restore](#)" sections in this guide.

Note: By default, all options affect only the active user, i.e. the user who is currently logged into the system. The program doesn't change any parameter of other users. To change parameters of all users who work with this computer (not just active user, but all of them), please click on «Software mode» button at top of the window. As you have set the working mode to «All users», changes made in WinTuning 7 will affect the parameters of all users. To change this politics back you must select «Current user only» mode. Please note that some of tweaks affect the parameters of all users (or active user only), regardless of which mode is selected. The parameters like that have special comment at the end of its tips.

This utility contains the following tweaks:

Log On Screen Text Shadow

Log On Screen Background

Automatically close Non-Responding applications

Enable defragmentation of system files

Run startup scripts asynchronously

Disable updating Group Policy

Run logon scripts synchronously

Disable Windows Prefetcher

Enable Verbose Status Messages

Enable Auto Admin Logon feature

Turn off automatic termination of applications

Hide the Welcome Screen of logon

Turn off Windows Startup Sound

Disable Windows logging

Disable creation of Last Known Good Configuration

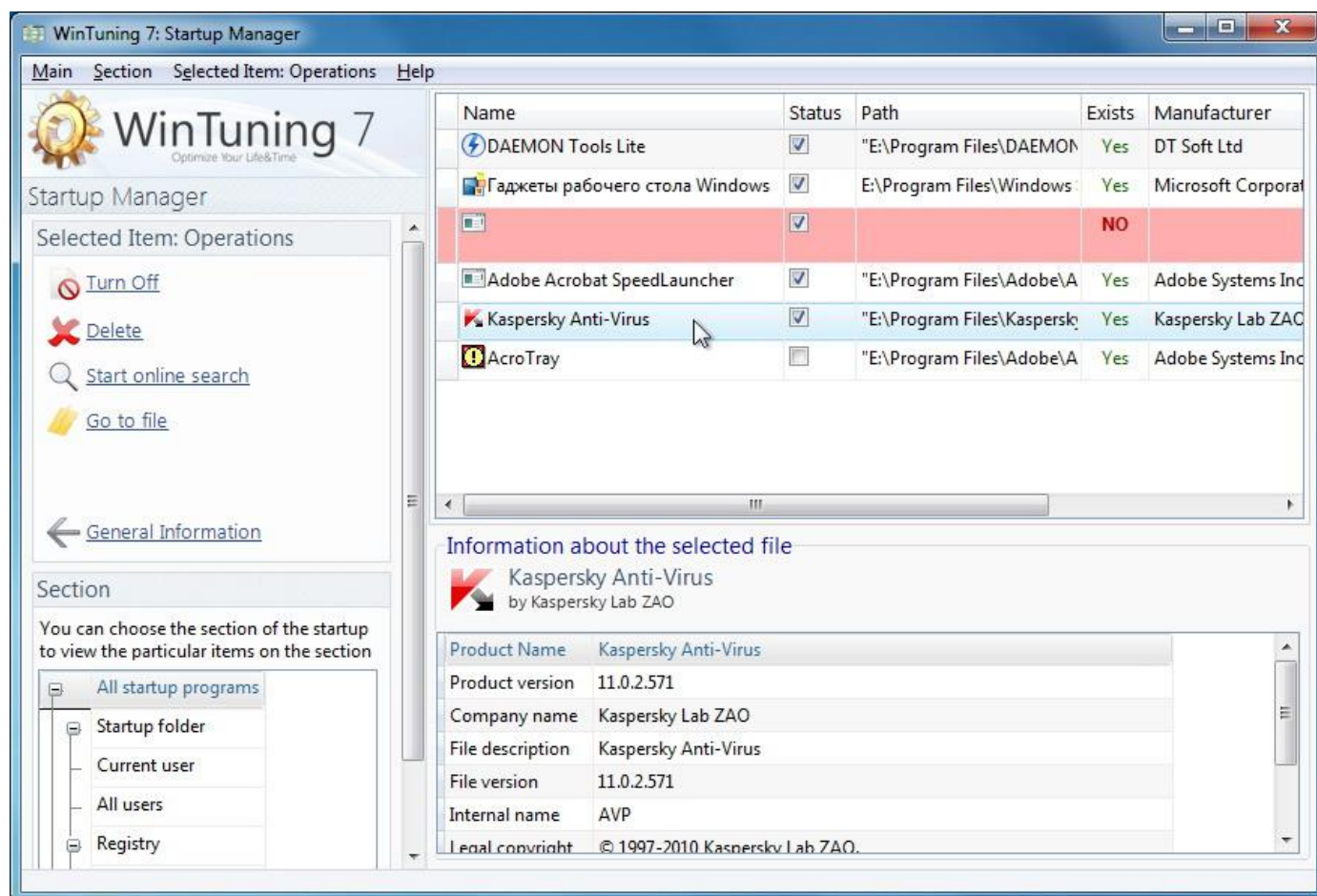
Disable Automatic Restart to read BSOD

Enable Legal Notice Dialog Box before Logon

Disk check timeout

Force use of Auto Logon

Startup Manager



A startup program is one that automatically starts up every time you start up your computer. It is therefore always running in the background and slows down your system, even if you never actually use the program. This makes perfect sense with a virus scanner, for example. However, other startup programs merely burden your system unnecessarily.

The fewer the programs that start automatically in the background, the faster your system will start up. In addition, your computer will run faster if there are no unnecessary programs in the background.

If you do not need automatic startup for a program, you can turn it off here and thereby accelerate the system startup and system performance. At any time you can turn it on again.

By default, after you open the main window it displays a list of all the programs that are loaded when your operating system (OS) is starting. There are not system applications which are required by OS to work properly in the list. Therefore even if you disable all the applications from this list OS will boot properly. Note that after a clean install of OS the list is empty.

At the left in the «**General Information**» area is the statistics of that you see on the screen: number of items (applications), enabled (loaded) and disabled startup programs for the selected category (see below).

In the "Section" you can choose the category of startup items, thus you can leave only items you need.

Section is the following two types: startup folder and registry.

- Startup folder – there are two special startup folders in Windows. By placing a shortcut to such folder you are "talking" to OS that you want to run this application when the system starts. One of these folders you can find on the menu "Start" > "All Programs" > "Startup". This is the user directory (affects current user only). Another folder - is a common startup folder. By placing an application shortcut to this folder, the OS will run the application (affects all users of a computer). To open the shared folder go to "Start" > "All Programs" > "Startup", right-click on it and select "Open All Users".

- Registry – another way to run a program automatically - is to put information about it in a special registry key. x32 operating systems have four such keys; x64 - six.

Windows 7 x32:

```
HKEY_CURRENT_USER\Software\Microsoft\Windows\CurrentVersion\Run
HKEY_CURRENT_USER\Software\Microsoft\Windows\CurrentVersion\RunOnce
HKEY_LOCAL_MACHINE\Software\Microsoft\Windows\CurrentVersion\Run
HKEY_LOCAL_MACHINE\Software\Microsoft\Windows\CurrentVersion\RunOnce
```

Windows 7 x64:

```
HKEY_CURRENT_USER\Software\Microsoft\Windows\CurrentVersion\Run
HKEY_CURRENT_USER\Software\Microsoft\Windows\CurrentVersion\RunOnce
HKEY_LOCAL_MACHINE\Software\Microsoft\Windows\CurrentVersion\Run
HKEY_LOCAL_MACHINE\Software\Microsoft\Windows\CurrentVersion\RunOnce
HKEY_LOCAL_MACHINE\SOFTWARE\Wow6432Node\Microsoft\Windows\CurrentVersion\Run
HKEY_LOCAL_MACHINE\SOFTWARE\Wow6432Node\Microsoft\Windows\CurrentVersion\RunOnce
```

String parameters REG_SZ are in these keys. Its names are equal the program names, and its values are full paths to exe-files. All keys that are ended with «RunOnce» are cleared when OS starting, i.e. all «RunOnce» programs are started just once. All «Run» programs are started always until you are not delete REG_SZ parameter or its exe-files.

Both Startup folder and Registry entries may affect only the active user or all users (all user accounts) of your computer.

The list of applications includes the following columns:

- Name - the name of the application;
- Status - on / off. Allows you to temporarily disable a startup application, without deleting the information about it.
- Path - full path to program exe-file. This column helps you better understand what kind of application is loaded when OS starts.
- Exists - if the exe-file (see column "Path") has been removed, it does not necessarily mean that the entry in the registry or shortcut were correctly removed. If the exe-file does not exist on disk (it was deleted or moved) but its item is in the startup database, then in this column you will see "No" and the row is highlighted to the red color. Such items can safely be removed.
- Manufacturer - name of the application developer.
- Section - each application can be placed to the startup by several ways (see above). This column displays the category of startup.

When selecting an application at the bottom of the window the program displays detailed information about it: application name and icon, developer, file and product version, file description, internal name, original file name, copyright information and trademarks, comments. A "Selected Item: Operations" area is displayed instead of the "General Information" area. From the "Selected item: Operations" area you can choose one of the four following operations:

- Turn on/Turn off – similarly performed actions of checkboxes in «Status» column. Allows you to temporarily disable a startup application, without deleting the information about it.

- Delete – completely removes the entry for startup in the registry, or a shortcut from the Startup folder.

- Start online search - offers a search engine "Google" to search the Internet for the name string of the application. A useful feature if you are not familiar with the application and doubts about its necessity.

- Go to File - opens folder in Windows Explorer that contains the exe-file of the application.

You can go to the statistics of the selected category by clicking "General Information" button. After you've done this "Selected item: Operation" area is disappeared.

When you right-click on the application list, a context menu containing all the elements of "Selected element: Operations" area is displayed (except of "General Information" item).

Main menu (at the top) of the «Startup Manager» window contains the following items:

➡ Main

- ▷ *General Information* – shows the same area at the left for the selected section.

- ▷ *Found an error?* – show a window «[Bug \(error\) report](#)». If you have found a critical error or a small bug in WinTuning 7, please let us know. You will help us to find and fix the error. Let's make WinTuning 7 better... together!

- ▷ *Exit* – close the window of the utility.

➡ Section

- ▷ *All startup programs* – shows all startup programs.

- ▷ *Startup folder* – shows all programs in startup folders (for current user only or for all users).

- ▷ *Startup folder > Active user* – shows all programs in startup folders (for current user only).

- ▷ *Startup folder > All users* – shows all programs in startup folders (for all users).

- ▷ *Registry* – shows all programs from the Registry (for current user only or for all users).

- ▷ *Registry > Active user* – shows all programs from the Registry (for current user only).

- ▷ *Peecmp > All users* – shows all programs from the Registry (for all users).

➡ Selected Item: Operations (*elements are active only when a startup item is selected*)

▸ *Turn On/Turn Off* – similarly performed actions of checkboxes in «Status» column. Allows you to temporarily disable a startup application, without deleting the information about it.

▸ *Delete* – completely removes the entry for startup in the registry, or a shortcut from the Startup folder.

▸ *Start online search* – offers a search engine "Google" to search the Internet for the name string of the application. A useful feature if you are not familiar with the application and doubts about its necessity.

▸ *Go to file* – opens folder in Windows Explorer that contains the exe-file of the application.

➡ Help

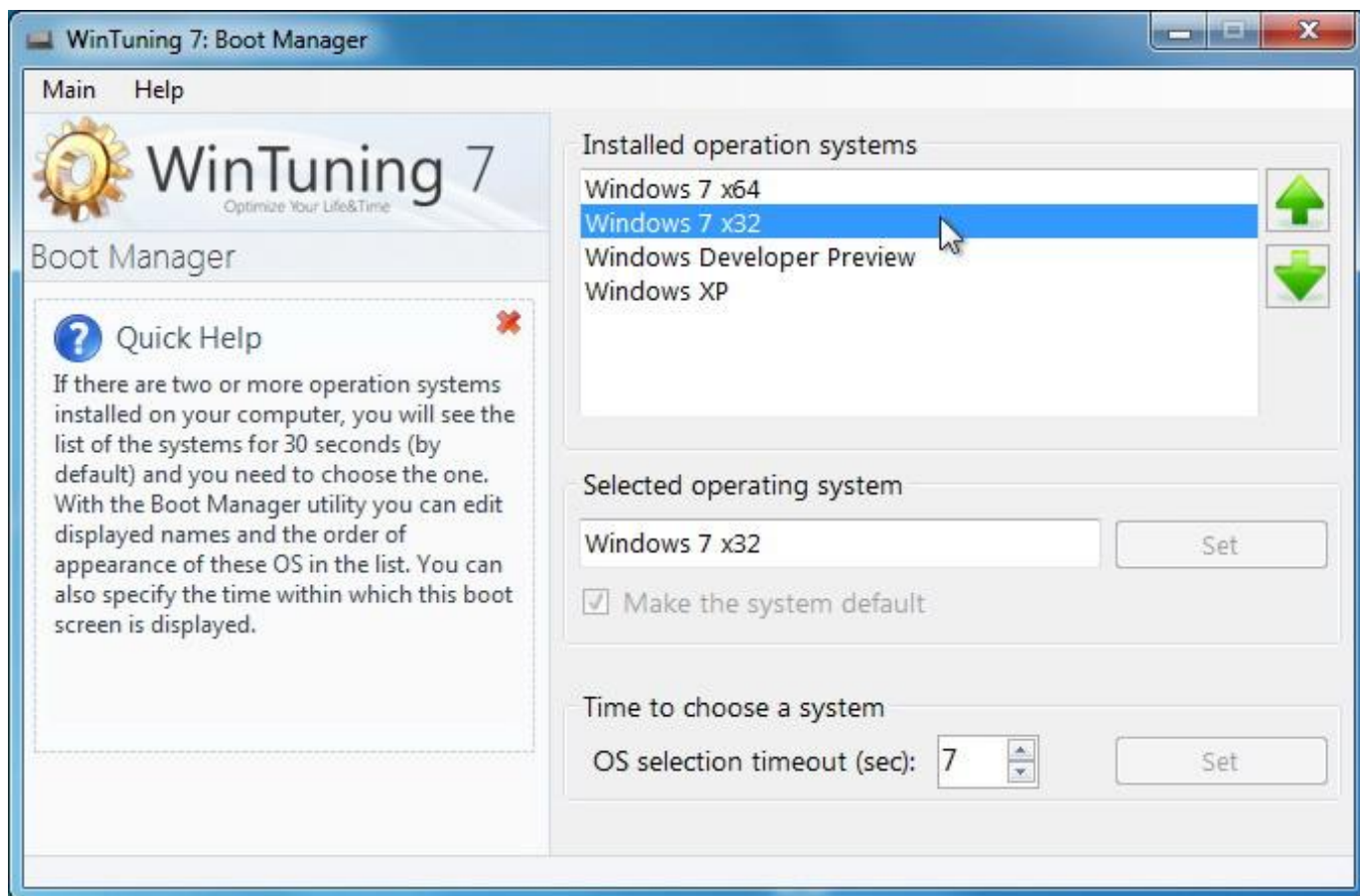
▸ *View help* – open help file.

▸ *Quick help* – show/hide the so called «Quick help». Quick help is the area at the main window of a utility in WinTuning 7. You can find short description of the utility in this area. It help you to get started with the utility shortly without opening help file.

▸ *Home page* – open home page of WinTuning 7 in your default browser.

▸ *About* – open «About» window, where you can find the name and version of the utility you are currently using.

Boot Manager



If there are two or more operation systems installed on your computer, you will see the list of the systems for 30 seconds (by default) and you need to choose the one. With the Boot Manager utility you can edit displayed names and the order of appearance of these OS in the list. You can also specify the time within which this boot screen is displayed.

To change the order of operating systems please select the operating system you want to move from the list and press the up and down arrows at the right of the list, move the OS to the necessary position. The displayed order will be automatically saved.

To change the displayed name of the operating system please select it in the list, edit the name in the field, which is located below and click "Set" button next to the new name. After you press the button new name will be saved. If you do not click the "Set" button, new name will not be saved and changes will be lost.

To change the default operating system (default OS is OS which will be run if no key is pressed during the boot screen is shown), please select the OS from the list and check "Make the system default". The changes will be immediately saved, and checkbox "Make the system default" will be disabled, but displayed showing the state.

To change the time duration of showing the OS boot screen selection please set time interval in the "Time to choose a system" group box next to "OS selection timeout (sec)" caption and click "Set" button in the same area.

Main menu (at the top) of the «Boot Manager» window contains the following items:

➡ Main

▸ *Found an error?* – show a window «[Bug \(error\) report](#)». If you have found a critical error or a small bug in WinTuning 7, please let us know. You will help us to find and fix the error. Let's make WinTuning 7 better... together!

▸ *Exit* – close the window of the utility.

➡ Help

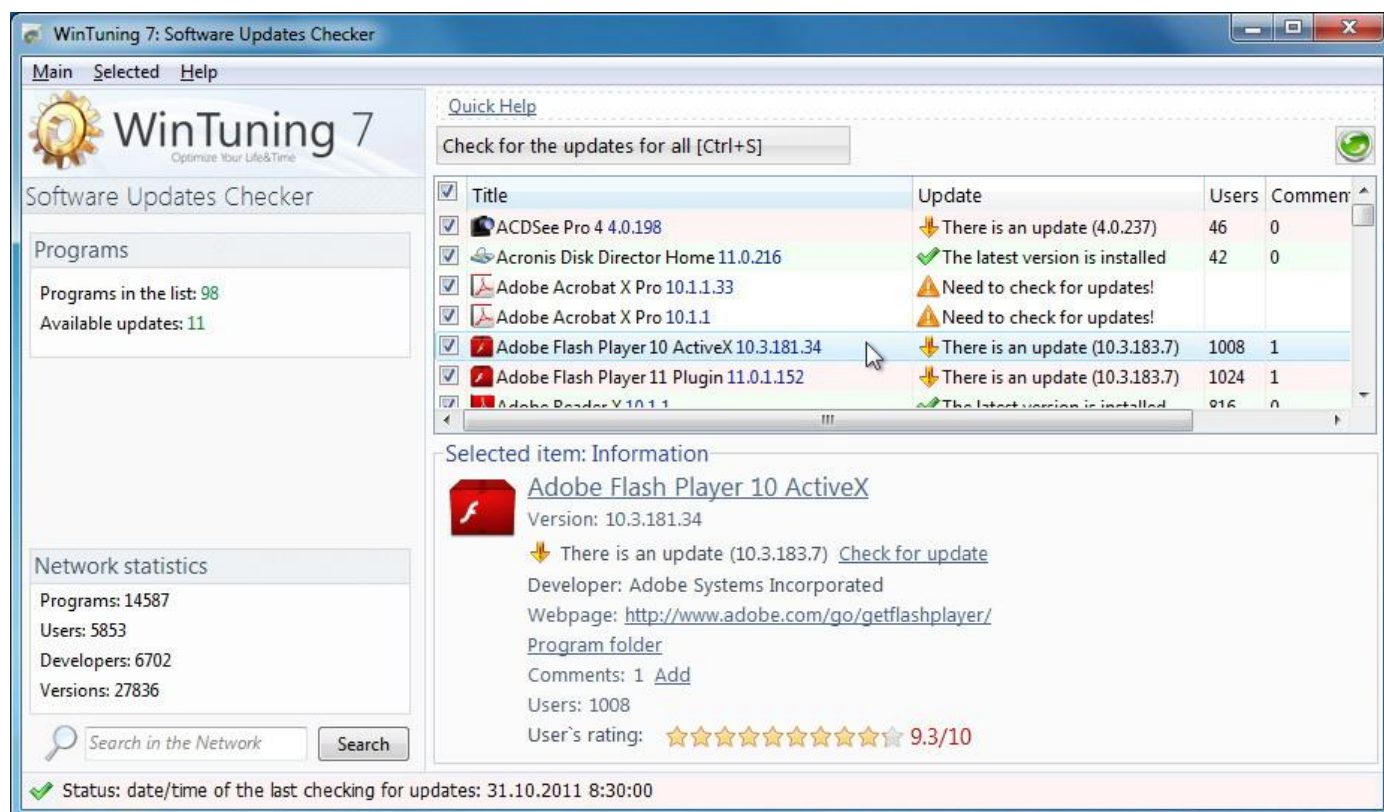
▸ *View help* – open help file.

▸ *Quick help* – show/hide the so called «Quick help». Quick help is the area at the main window of a utility in WinTuning 7. You can find short description of the utility in this area. It help you to get started with the utility shortly without opening help file.

▸ *Home page* – open home page of WinTuning 7 in your default browser.

▸ *About* – open «About» window, where you can find the name and version of the utility you are currently using.

Software Updates



Software Updates Checker is the utility that helps you always to know when the latest version of your software is accessible. It connects to the Internet <http://getproginform.com> to get the information about the latest versions of the software that are installed on your operating system. If there is an update the program let you know immediately.

After the start of the utility you have to wait for the scanning of installed applications ends. There is information about the number of known programs, versions, developers and the number of registered users in the "Network statistics" area on the left below.

The search field allows you to start searching for new program. To do this, please type the program name you are interested in and click "Search" button. It opens the default Internet browser and you go to the page of the search results at getproginform.com.

The program displays information about the number of installed applications and the number of the updates (only after scanning for updates) in "Program" area. To re-scan the programs installed on your computer without rebooting the utility you can use the "Refresh the program list" button, located in the upper right or press the F5 key on your keyboard.

At the bottom of the utility window is the status bar that displays the current status of the check for updates process.

To start checking for updates for all the selected (checkmarks) programs, please click the "Check for the updates for all" button above the list of programs, or press the Ctrl + S key combination on your keyboard. After that, all selected programs will be scanned for updates one by one. The program that is currently scanned for updates is highlighted during the process of searching for new versions. Scanning will be completed when the last selected program is scanned. You can stop the scan at any time by clicking "Stop scan".

The list of installed programs has the following columns:

- Title – name and the version of the program;
- Update –this column is shown whether the application needs to be updated. Depending on this column background is colored by the status color. Takes the following values:
 - ⚠ Need to check for updates – the check for updates for this program has not been made yet, so that information about a new version is not available.
 - ✓ The latest version is installed – if you see this status this program does not need to be updated. You are using the latest version at the current time.
 - ⬇ There is an update (*version number*) – if you see this status this program is need to be updated. There is the newest version on developer's site.
 - 🔄 The latest version is installed: Database is updated – if you see this status the website getproginform.com has no information about the version that you have installed. You are using the latest version of the program. The information about your version is transferred to the website. The website stores information about the newest version, but does not view it. In order to see such information a minimum number of users who use the same version as you are needed.
- Users – this column shows the total number of users who registered on website getproginform.com and who are using this application.
- Rating – average rating (on a ten marks scale, 10 - excellent, 1 - bad).
- My Rating – if you've rated this program (on a scale, 10 - excellent, 1 - bad), then it will be displayed in this column.

Advise: you can vote for your favorite programs, and then sort it by this column. To sort by any column simply click on its name. Click again on the same column to reverse the sort order (ascending / descending).

If you click on a program you will see the detailed information about it at the bottom of the main window of Utility:

- icon;
- name;
- installed version;
- developer;
- status of update (see above);
- home page (you can open this page in your default browser by clicking the address);
- number of comments at getproginform.com;
- number of users, who are using this program;
- average star rating of users (on ten marks scale, 10 - excellent, 1 - bad).

Area at the bottom of the screen for each program includes the following features:

- When you click on the name of the program you get into the program profile on the site getproginform.com;
- The link "Check for update" starts the process of checking for an update for the selected program;
- When you click on the address of developer's website the Utility will open the default browser and you will go to developer's website;

- Link "Program folder" opens the folder that contains the exe-file of the selected program;
- Link "Add" opens a window to add a comment to the selected program (see below);
- You can rate the selected program by clicking on the one of 10 stars (ten-stars scale, 10 - excellent, 1 - bad). Moving the mouse pointer to a star you can see your rating on the right, in case you decide to click on it.

To leave a comment to the selected program via utility "Check for updates", do the following steps:

1. Select the program you want to leave a comment for;
2. Click "Add" link at the bottom of the window;
3. Enter a comment;
4. Set the slider at the number of your rating (on ten-stars scale, 10 - excellent, 1 - bad) for this program (which corresponds to the comment);
5. Click «OK». If you click "Cancel" or close the comment window, the comment and rating will not be sent and will not be saved.

When you move you mouse point to the "Quick Help" link at the top under the main menu of the main window the so-called quick help appears on the screen. Quick Help - is an area on the main form of the utility that displays short text information about the utility that allows you to quickly start using the utility functions without opening the Help system.

When you right-click on the list of installed programs a context menu appears. Context menu items are completely analogous to sub-menu "Selected" of the main menu (see below).

Main menu (at the top) of the «Software Updates» window contains the following items:

➡ Main

- *Check for updates for all* – similarly to the action performed by the "Check for the updates for all" button (see above) or the key combination Ctrl + S.
- *Refresh the list of the installed programs* – similarly to action performed by the "Refresh the program list" button (see above) or F5 key.
- *Settings* –opens settings window, where you can view and change your email / password, and recover a forgotten password. To recover the forgotten password, click "I forgot my password" and follow the onscreen instructions. To save the changes, click «OK». Click "Cancel" to cancel all the changes you've made. Change your email / password and click "Sign Up" to sign up to getproginfo.com as a new user.
- *Found an error?* – show a window «[Bug \(error\) report](#)». If you have found a critical error or a small bug in WinTuning 7, please let us know. You will help us to find and fix the error. Let's make WinTuning 7 better... together!
- *Exit* – close the window of the utility.

➡ Selected

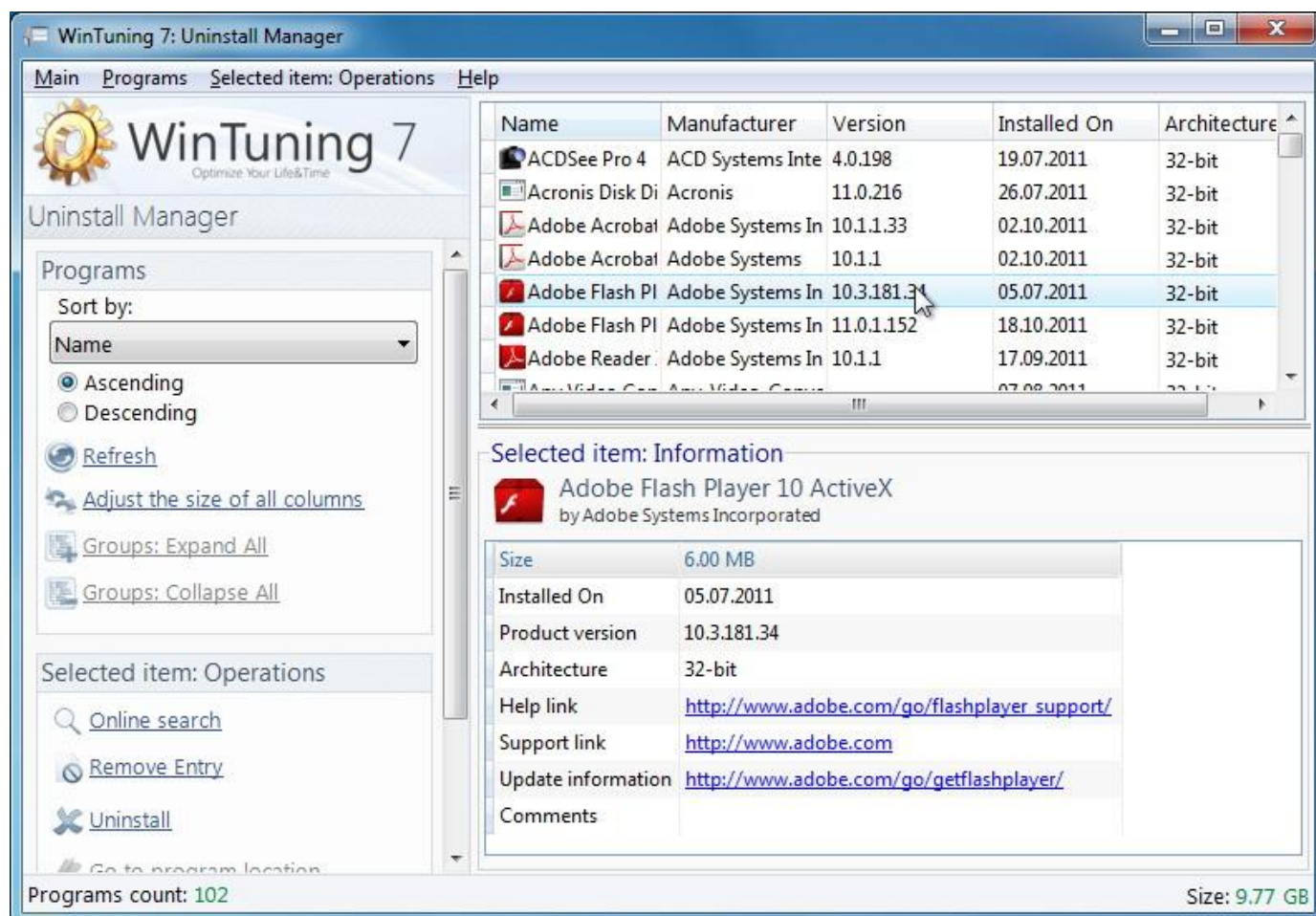
- *Check for updates* – starts the process of searching for an update for the selected program.

- ▶ *Ignore this update* (enable/disable) – corresponds to the checkboxes in the list next to each program.
- ▶ *Program profile*– opens the program profile on the site getproginfo.com.
- ▶ *Webpage* – open default browser to go to the site of the selection application.
- ▶ *Add a comment* – opens a window to add a comment to the selected program (see above).
- ▶ *Rate > 1..10* – allows you to assign a rating for the program (on a ten-stars scale, 10 - excellent, 1 - poor).
- ▶ *Program folder* – opens the folder that contains the exe-file of the selected program.

➡ Help

- ▶ *View help* – open help file.
- ▶ *GetProgInfo.com webpage* – open home page of GetProgInfo Social in your default browser.
- ▶ *Home page* – open home page of WinTuning 7 in your default browser.
- ▶ *About* – open «About» window, where you can find the name and version of the utility you are currently using.

Uninstall Manager



Over time, you accumulate a large number of programs on your computer, many of which you probably do not even use. So that your Windows system runs smoothly and correctly, you should regularly remove unused or superfluous programs. Uninstall Manager lets you rapidly determine what programs take up an especially large amount of space or not needed anymore.

After the start of the utility you have to wait for the end of the scanning of installed programs.

After the installed programs have been scanned the following items are available on the left “Programs” pane:

- Sort by one of the following columns in a list of programs (some of the columns can be hidden; to display hidden columns please click the "Settings" button - see below):

Name
Manufacturer
Version
Size
Installed On
Architecture
Help link
Support link
Update information

Comments

Location

- Select the type of sort for the selected column: ascending / descending order.
- "Refresh" - this button clears the list of installed programs and then starts the process of scanning again. It may be needed if you've installed new software but the list was not updated automatically.
- "Adjust the size of all columns" - the default width of columns in a list of programs has the fixed size. If the names of some programs do not fit the width of the columns, click on this button and all the columns in the list of programs will fit to all application labels. And you don't have to change the width of the columns manually.
- "Groups: Expand All" and "Groups: Collapse all" - if the view mode is "show in groups", all the groups can be expanded or collapsed by one click on one of these buttons..

To perform actions on the selected program you can use the buttons in the "Selected item: Operations" area:

- «Online search» - opens the search engine "Google" to search the Internet for the name of the application. A useful feature if you are not familiar with the application and doubts about its necessity.
- «Remove Entry» - removes information to properly remove a program from the Registry (if you've uninstalled the program, but the entry left in the Registry).

NOTE: After you've pressed the "Remove Entry" button you will not be able to correctly uninstall the application without the installation file. Operation «Remove Entry» is required only if you believe that you've already uninstalled the program, but information about it is still in the Registry.

- «Uninstall» - starts the uninstall process to remove the application from your computer.
- «Go to program location» - opens Windows Explorer and go to the folder that contains the exe-file of the application.

Only one button "Settings" is shown in the "Settings" area. Clicking on the button a settings window appears:

- "Show in groups" checkbox enables grouping applications in the program list. Groups vary with the sorting of a particular column:

Name: 0-9, A – D, E – K, L – R, S – Z, Other;

Installed On: A long time ago, 2 months ago, 1 months ago, Last month, Yesterday, Today, Unknown;

Size: Very large, Large, Medium, Small, Unknown;

Architecture: 32-bit, 64-bit;

- Under "Columns" you can select the columns to be displayed in the list of programs in the utility. You can do that by setting / removing ticks next to the names of the columns. By default the following columns are selected: 'Name', 'Manufacturer', 'Version', 'Installed On'. The "Name" column cannot be hidden, so it is displayed but not editable. The "Default" button selects all these columns and unselects all the other.

To save the changes please click «OK» button. When the grouping is on it may needed to rescan the software installed (this procedure is started automatically). To cancel all changes you've made in the settings window please click "Cancel" button, or simply close the window.

At the bottom of the main window of utility is the status bar that displays the current status of the updating process.

If you click on an application in the list you will see the detailed information about it at the bottom of the main window:

- icon;
- name;
- size;
- date of the installation;
- version;
- architecture;
- web-links of help, support and updates. You can click on each of them.

When you right-click on the list of installed applications context menu is appeared. The items of this menu is the same as the items of the sub-menu "Selected item: Operation" of the main menu (see below).

Main menu (at the top) of the «Uninstall Manager» window contains the following items:

➡ Main

▸ *Settings* – opens the settings window (see above). Similarly to performed action of the "Settings" button.

▸ *Found an error?* – show a window «[Bug \(error\) report](#)». If you have found a critical error or a small bug in WinTuning 7, please let us know. You will help us to find and fix the error. Let's make WinTuning 7 better... together!

▸ *Exit* – close the window of the utility.

➡ Programs – the items of this sub-menu are completely the same as the buttons in the "Programs" area, located in the main window (see above).

➡ Selected item: Operation – the items of this sub-menu are completely the same as the buttons in the "Selected item: Operation" area, located in the main window (see above).

➡ Help

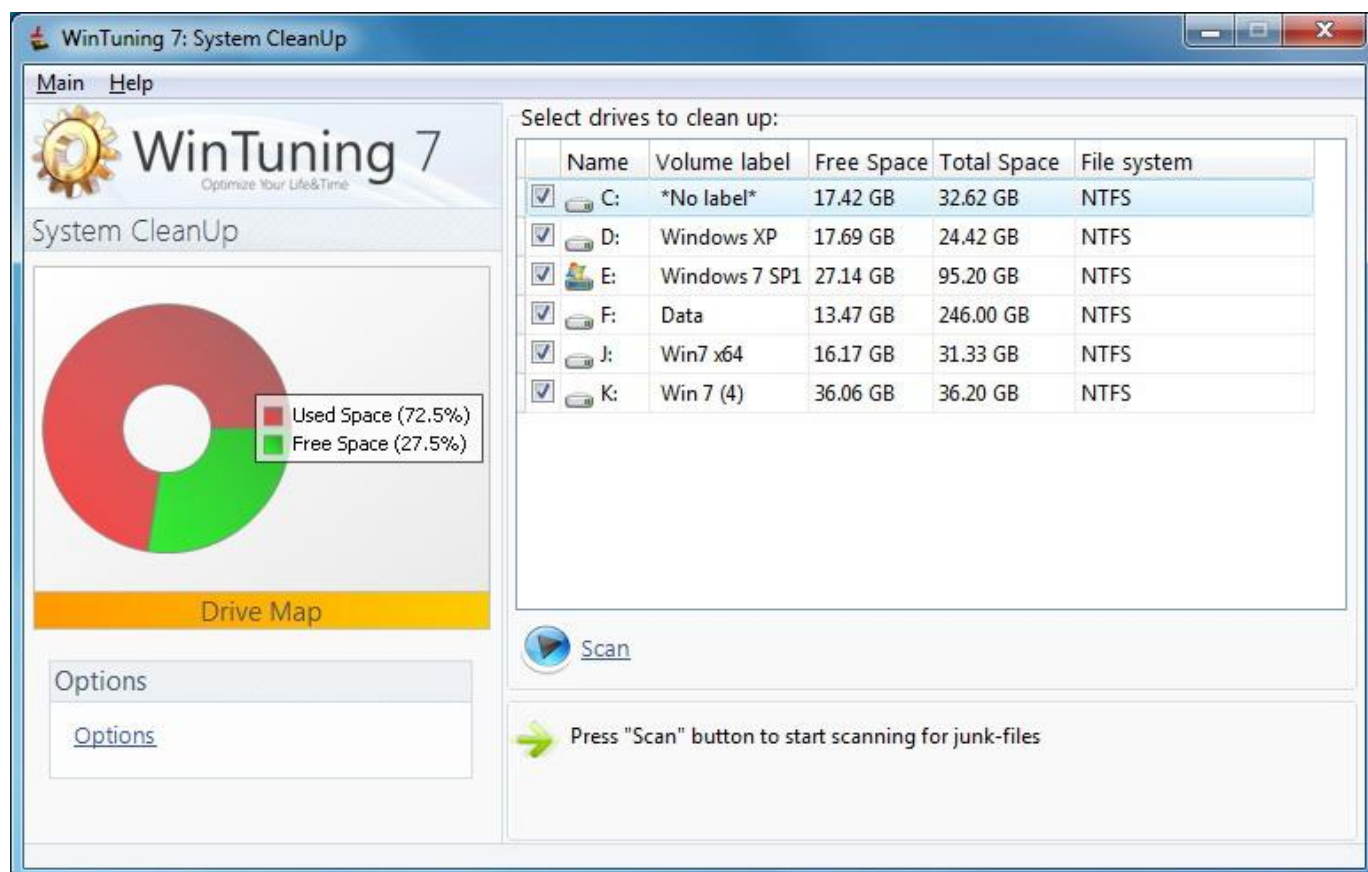
▸ *View help* – open help file.

▸ *Quick help* – show/hide the so called «Quick help». Quick help is the area at the main window of a utility in WinTuning 7. You can find short description of the utility in this area. It help you to get started with the utility shortly without opening help file.

▸ *Home page* – open home page of WinTuning 7 in your default browser.

▸ *About* – open «About» window, where you can find the name and version of the utility you are currently using.

System CleanUp



System CleanUp can clean up your system from unneeded files, system update backups, and several other unnecessary items occupying disk space.

To start the scanning process, do the following:

1. Mark checkboxes to select the disks to be scanned for unnecessary files. The following information is presented in the list of drives: drive letter, label, amount of free space, total space, file system (NTFS, FAT32, ...). A chart of free disk space for the selected disk is on the left. On the chart the red is used space and the green is free space.
2. To customize the search process click "Options" in "Options" area. After that the Options window is displayed (see "System CleanUp Options" below).
3. Click the "Scan" to start the scanning process. After that the process of finding unnecessary files and adding this information to a special database in the utility is started. The state of scanning process is displayed below showing the folder that is currently scanned. The utility scans your system disk first, and then the others.

You can setup the process searching for unnecessary files in a special options window by clicking on "Options" button. The Options window contains three tabs:

- «Removal» tab contain the settings of the removal process. You can select to delete files to Recycle Bin (and only after reviewing the entire list of files and making sure that the system is functioning correctly, empty the trash - is recommended), permanent (files will be removed immediately bypassing the recycle bin), or placed in a folder on the hard drive. Enabling the "Only scan files older than 48 hours" utility will not show in results the files that have changed

over the past 48 hours. It is recommended to put check this checkbox, since you thus increase the reliability of the utility.

- «*File types*» tab contains a list of unnecessary file types (in our view). For example, many programs create the so-called log files, writing all its actions to these files. However, if you do not browse the files, then, of course, they are not needed. Full list of file types that we believe are unnecessary, is presented below. The file mask is presented in the parentheses. For example, when the mask is «*.tmp» the utility will find all files such "AnyFileName.tmp", "afn.tmp", "123456.tmp" etc. The asterisk "*" represents any character set, and the question mark "?" – only one symbol::

1. *Temporary files (*.tmp)*
2. *Temporary files (*.temp)*
3. *Temporary files (*.???)*
4. *Temporary files (*.??~)*
5. *Temporary files (*.?~?)*
6. *Temporary files (*.____)*
7. *Temporary files (*.---)*
8. *Temporary files (*.\$\$\$)*
9. *Temporary files (*.@@@)*
10. *Temporary files (*.^*)*
11. *Temporary files (*.dd)*
12. *Temporary files (*.~*)*
13. *Temporary files (*.mp)*
14. *Temporary files (*.~mp)*
15. *Temporary files (*.syd)*
16. *Temporary files (*.db)*
17. *Temporary files (*.db\$)*
18. *Temporary files (file????._dd)*
19. *Temporary files of help (*.ftg)*
20. *Temporary files of help (*.fts)*
21. *Temporary files of help (*.gid)*
22. *Setting temp files (mscreate.dir)*
23. *TWAIN Temporary files (twain???.mtx)*
24. *Recover files for lost cluster (*.chk)*
25. *Recover files for lost cluster (chklist.*)*
26. *Transferred to PC Temp file of Mac Photoshop (*.#Res)*
27. *Old backup files (*.old)*
28. *Windows diagnostic files (suhdlog.dat)*
29. *Scan disk log file (scandisk.log)*
30. *Error file (*.err)*
31. *Temporary cached newsgroup data (0???????nch)*
32. *Windows XP/Vista cache thumbnails file (Thumbs.db)*
33. *Backup files (*.bak)*
34. *Memory dump (*.dmp)*
35. *Windows diagnostic Registry file (system.1st)*

All selected file types are marked by the utility as "unnecessary". The search for such unnecessary files is take place only on non-system drive. The system drive is scanned only for specific files (temp folder, browsers cache, history etc.). If you need all files of a file type and you don't want to these files to be scanned then simply unselect this type. In this case the utility will not display them in search results.

- «*Skipped Folders (Safe List)*» tab contains a list of folders that are not need to be scanned for unnecessary files. This "Safe List" may contain, for example, folders with personal data or data use. This setting gives a 100% guarantee of protection against accidental deletion of files in these folders. You can delete or add your own safe folders to the list. By default, the list shows the recommended folders and files, in which it is better not to scan. If you have accidentally deleted some folders from the recommended list, you can always restore the default recommended list by clicking the "Recommended folders".

You can save the settings by pressing the «OK» button. When you click on "Cancel" or in case of closing the window without using the «OK» button all changes you've made will not be saved.

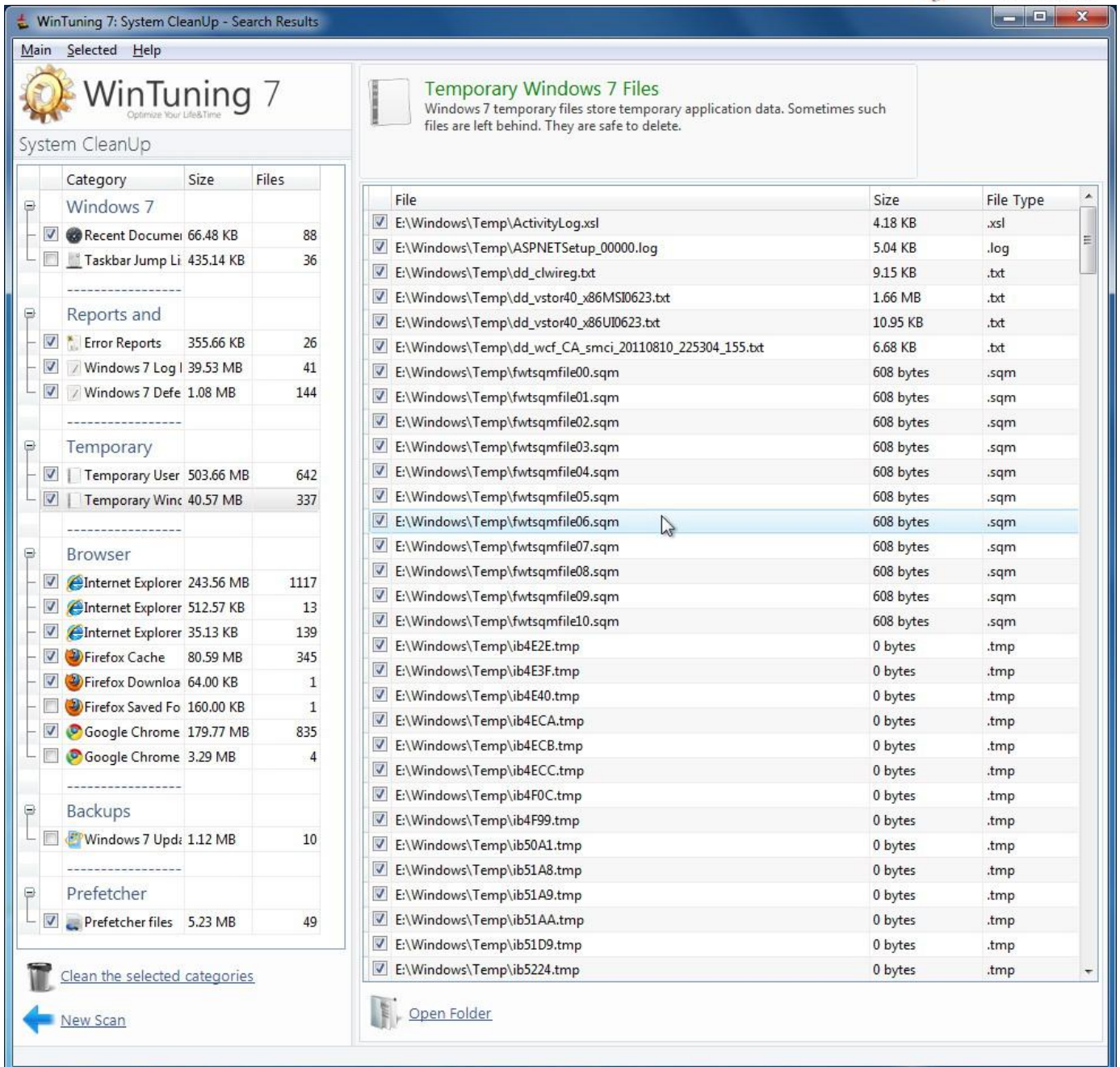
Main menu (at the top) of the first window of «System CleanUp» contains the following items:

➡ Main

- *Scan* – starts the search for unnecessary files. Similarly to performed action of "Scan" button.
- *Options* – opens the settings window (see above). Similarly to performed action of "Options" button.
- *Found an error?* – show a window «[Bug \(error\) report](#)». If you have found a critical error or a small bug in WinTuning 7, please let us know. You will help us to find and fix the error. Let's make WinTuning 7 better... together!
- *Exit* – close the window of the utility.

➡ Help

- *View help* – open help file.
- *Quick help* – show/hide the so called «Quick help». Quick hekp is the area at the main window of a utility in WinTuning 7. You can find short description of the utility in this area. It help you to get started with the utility shortly without opening help file.
- *Home page* – open home page of WinTuning 7 in your default browser.
- *About* – open «About» window, where you can find the name and version of the utility you are currently using.



The screenshot shows the WinTuning 7: System CleanUp - Search Results window. The interface is divided into several sections:

- Left Panel (System CleanUp):** A tree view showing categories of unnecessary files. The 'Temporary' category is selected, showing subcategories like 'Temporary User' (503.66 MB, 642 files) and 'Temporary Windows' (40.57 MB, 337 files).
- Top Right (Temporary Windows 7 Files):** A description stating: 'Windows 7 temporary application data. Sometimes such files are left behind. They are safe to delete.'
- Main List:** A table displaying the details of the selected files. The table has three columns: 'File', 'Size', and 'File Type'. It lists various files in the 'E:\Windows\Temp' directory, including ActivityLog.xml, ASPNETSetup_00000.log, and several .txt files. A mouse cursor is hovering over the file 'E:\Windows\Temp\fwtsqmfile06.sqm'.
- Bottom Left:** Buttons for 'Clean the selected categories' and 'New Scan'.
- Bottom Right:** A button for 'Open Folder'.

At the end of the search for unnecessary files process a results window will appear. The information about every unnecessary file is placed into the category of unnecessary files. The list of the categories is on the left in the results window. Each category is divided into subcategories. The total size and the number of unnecessary files are displayed for each subcategory. To view the files of a category click on it in the list and wait for the included files are loaded for viewing. The name and description of the selected category is displayed in the top of the window. In the files list all the file names + path to each of them (column "File"), its size and type (extension) are shown.

There are 7 categories of unnecessary files; each of them has from 1 to 11 sub-categories:

- *Windows Explorer*
 - *Recent Documents* - The Recent Documents folder on the Windows Start menu displays a list of files and documents that you most recently used. This information (not files but just shortcuts) is safe to delete.

- *Taskbar Jump Lists* - Jump lists provide quick access to application features. It appears on the Taskbar when you right-click on an icon. If you worry about the privacy you can clean the Jump Lists.
- *Reports and Log files*
 - *Error Reports* - If you never send application crash reports to application developers, then you can delete such report files.
 - *Windows Log Files* - Log files include data about application and system service behavior and are only required to track down problems. They are safe to delete.
 - *Windows Defender Scan Log files* - Windows Defender Scan Log files contain data about completed system scans and are safe to delete.
- *Temporary Files*
 - *Temporary User Files* - Temporary user files store temporary data required during the execution of setups and other applications. They are safe to delete.
 - *Temporary Windows Files* - Windows temporary files store temporary application data. Sometimes such files are left behind. They are safe to delete.
- *Browser Cache*
 - *Internet Explorer Temporary Files* - Internet browser cache files accelerate the browsing speed of websites you have visited before. They are safe to delete.
 - *Internet Explorer History* - Internet browser cache files accelerate the browsing speed of websites you have visited before. They are safe to delete.
 - *Internet Explorer Cookies* - Internet browser cache files accelerate the browsing speed of websites you have visited before. They are safe to delete.
 - *Opera Cache* - Internet browser cache files accelerate the browsing speed of websites you have visited before. They are safe to delete.
 - *Opera Download Files* - Internet browser cache files accelerate the browsing speed of websites you have visited before. They are safe to delete.
 - *Opera History* - Internet browser cache files accelerate the browsing speed of websites you have visited before. They are safe to delete.
 - *Firefox Cache* - Internet browser cache files accelerate the browsing speed of websites you have visited before. They are safe to delete.
 - *Firefox Download History* - Internet browser cache files accelerate the browsing speed of websites you have visited before. They are safe to delete.
 - *Firefox Saved Form Information* - Internet browser cache files accelerate the browsing speed of websites you have visited before. They are safe to delete.
 - *Google Chrome Cache* - Internet browser cache files accelerate the browsing speed of websites you have visited before. They are safe to delete.
 - *Google Chrome History* - Internet browser cache files accelerate the browsing speed of websites you have visited before. They are safe to delete.
- *Backups*
 - *Windows Update Backups* - Windows Update backups store system file backups. If you do not plan to uninstall a Windows Update, then it is safe to delete the backups.
- *Prefetcher files*
 - *Prefetcher-файлы* - Prefetch files store data about how a specific application loads in order to optimize the load time of applications. They are safe to delete.

- *Other Unnecessary Files*

- Disk X (instead of “X” the program shows letter of non-system disk) – Other files include several types of temporary, redundant and other unnecessary files left behind by applications (see Options of the utility above) on “X” drive. They are safe to delete.

All selected files will be deleted. If you think that a file is not unnecessary just unselect it, thereby this file will not be deleted. To select all files in the category select the category in the list of categories at the left. Unselect a category to unselect all files included in the category.

To open a folder of the selected file in Windows Explorer, please click "Open Folder" or double click on the file. To delete all selected files in all selected categories, click "Clean the selected categories". To start a new scan and erase the results of this scan, click "New Scan"

Main menu (at the top) of the second window (results) of «System CleanUp» contains the following items:

➔ Main:

- *Clean the selected categories* – delete all selected files. Similarly to performed action of the button with the same name.
- *New scan* – opens the first window of the utility to start a new scan. Similarly to performed action of the button with the same name.
- *Found an error?* – show a window «[Bug \(error\) report](#)». If you have found a critical error or a small bug in WinTuning 7, please let us know. You will help us to find and fix the error. Let's make WinTuning 7 better... together!
- *Exit* – close the window of the utility.

➔ Selected

- *Open Folder* – opens the folder of the selected file in Windows Explorer. Similarly to performed action of the button with the same name.

➔ Help

- *View help* – open help file.
- *Quick help* – show/hide the so called «Quick help». Quick help is the area at the main window of a utility in WinTuning 7. You can find short description of the utility in this area. It help you to get started with the utility shortly without opening help file.
- *Home page* – open home page of WinTuning 7 in your default browser.
- *About* – open «About» window, where you can find the name and version of the utility you are currently using.

Rename Files



Rename Files feature allows you to rename a lot of files by one mouse button click. It supports name mask. For example, for "A_name.txt", "A_second_name.txt", etc. it may be "File 001.txt", "File 002.txt" etc.

To begin the process of renaming files, perform the following steps:

1. *Select a folder with files* - full path to the folder that contains the files to rename. If you do not remember the full path, you can specify the folder by pressing the button (with a folder icon) next to the input field. If the folder contains subfolders with files placed in them, which should also be renamed, then select "Include sub folders" - all files in subfolders will be included in the list to rename.
2. *Rename to folder* - you can simply rename the file, but you can rename the file and move it to another folder. To rename a file and then move to a folder, uncheck the box "To the same folder" and specify the full path to the folder where you want the files will be placed after the renaming.

3. *Mask* - specify the search mask in this field. The program will search files according to this mask only. For example, specifying here "*. bmp" (without the quotes) – bmp files will be renamed only; "Map *.*" - all files with the word "map" will be renamed, i.e. file such "Map 1.txt", "Map on the table.jpg", "map", etc. "*. *" - all the files will be renamed.
4. Files are replaced (moved) or copied. If you choose "Replaced/Moved", the files will be renamed, i.e. file with the old name will be deleted, but the same file with new name will be created. If you select "Copied", then files with the old name will not be deleted.
5. *Counter parameters*. New files will have the following names: «File 0001.txt», «File 0002.txt», «File 0003.txt», etc. Here 1, 2, 3 - is a counter number. File «File 0001.txt» was found first, «File 0002.txt» - the second, etc. There are three leading zeroes in our case, but you can set any number of leading zeroes to get file names such "File 1.txt", «File 2.txt», «File 3.txt», etc. Parameters of the counter can be set here. In the "From" field, you can specify the initial count, for example, if you set "5", then the first file will have «File 5.txt» name, but not «File 1.txt». If you select the "to" checkbox and specify a numeric value, then upon reaching this value, the renaming process will be terminated automatically. In the "Format", you can specify the number of leading zeros. For example, specifying «####» three leading zero will be added (if its value lies in the range from 1 to 9), two zeros (if its value lies in the range from 10 to 99), etc. That is, if the count is 29, the value will be 0029. In the "Template" you can specify the file name mask. You can use 4 variables (it begins and ends with percent signs [%]).

%count% - value of the counter (optional) - this variable will be substituted with a counter value;

%ext% - the file extension - you can use the file extension in any place of his name;

%size% - file size - you can use the file size anywhere in his name;

%old_name% - you can use the old file name with no extension anywhere in its name.

For example, using the template "File_%count%.%Ext%" and the format «###» you will get something like "File_001.txt", "File_002.txt", "File_003.txt" etc. If you enable "Prompt before each operation" each renaming procedure will be prompted to perform the operation.

6. Click "Rename files". The progress of the renaming files will be displayed at the bottom of the utility's main window.

Main menu (at the top) of the «Rename Files» window contains the following items:

➔ Main

▸ *Rename files* – starts the process of renaming files. Similarly to performed action of the button with the same name.

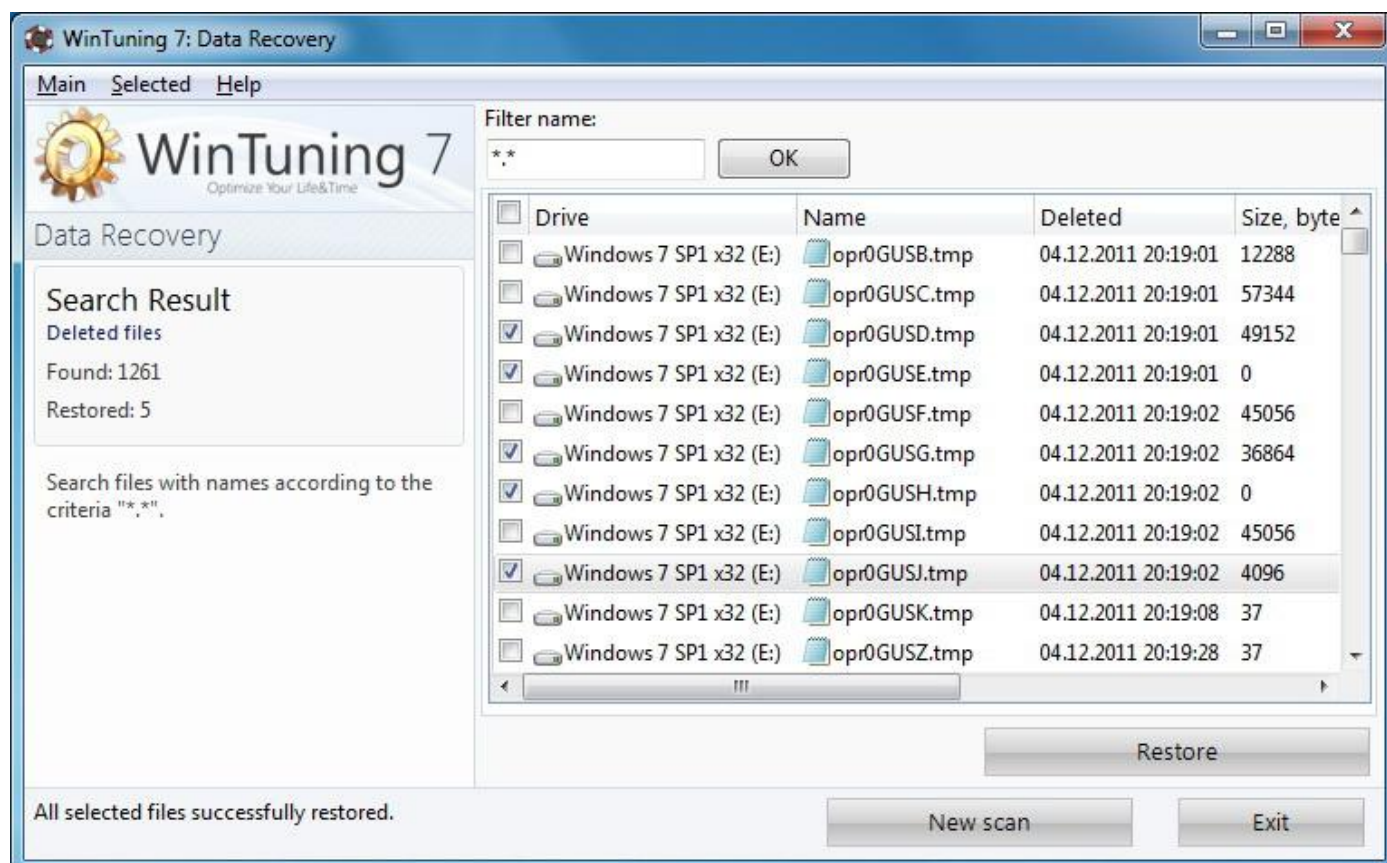
▸ *Found an error?* – show a window «[Bug \(error\) report](#)». If you have found a critical error or a small bug in WinTuning 7, please let us know. You will help us to find and fix the error. Let's make WinTuning 7 better... together!

▸ *Exit* – close the window of the utility.

➡ Help

- ▷ *View help* – open help file.
- ▷ *Quick help* – show/hide the so called «Quick help». Quick help is the area at the main window of a utility in WinTuning 7. You can find short description of the utility in this area. It help you to get started with the utility shortly without opening help file.
- ▷ *Home page* – open home page of WinTuning 7 in your default browser.
- ▷ *About* – open «About» window, where you can find the name and version of the utility you are currently using.

Data Recovery



A lot of deleted from the Recycle Bin (or Shift+Delete) files are not completely erased, and you can still restore them. **WinTuning 7: Data Recovery** is a utility to recover deleted files from your computer. Data Recovery uses a fast and efficient algorithm that allows you to find and recover files deleted on a variety of reasons: human error, virus attack, error in software or hardware etc. The program works with hard disks, digital cameras connected via USB, as well as most types of memory cards (flash drives).

By using the "Restore Data", you can recover files from:

- Hard drives;
- Photos or video cameras;
- CD/DVD drives;
- USB drives;

By using the "Data Recovery", you can restore your files:

- Removed by mistake from your computer or any other device;
- Removed by virus attack;
- Too big to fit in Recycle Bin;
- Deleted from network drives;
- Removed from the flash drive;
- Removed by pressing combinations of keys on the keyboard "Shift + Delete";
- Created and deleted by certain applications;
- Removed from the command line.

You can restore deleted files, provided Windows has not yet overwritten the drive space that these files took up.

Important information on rescuing data

Note that the longer ago a file was deleted and the more you have worked on your computer since then, the smaller the chance of complete restoration. Therefore, as soon as you realize that the file should not have been deleted, try to rescue it with **WinTuning Data Recovery**.

Never install software for recovering deleted files on your system if the mishap has already occurred. You could overwrite important data irrevocably precisely by installing such software.

Even if you install the application on a different drive, deleted data is still at risk from temporary installation files. Data recovery software like **WinTuning Data Recovery** should therefore always be installed and ready for use in advance.

Search tip: Use the wildcards * and ?

When entering your search terms you can use wildcards. This function is exactly the same way as in many standard search engines.

The use of wildcards when searching is useful if you cannot remember the precise name of the file or only wish to search for a certain file extension. A file extension provides information on the type of file, e.g. .doc, .docx, .jpg, .tif.

* and ? can be used as wildcards, whereby * represents multiple characters and ? stands for an individual character.

Examples for the use of wildcards

A search using DSC * will find all files whose name starts with DSC, and of all file types i.e. DSC_01561.jpg, DSC.bmp, DSC4151.tif, etc.

A search for photo.* or for photo (no wildcard) will find all files called photo and of all file types, i.e. photo.jpg, photo.doc, photo.tif, etc.

A search for *.docx will find all files with the extension .docx.

A search for photo_?? finds all files whose name starts with photo_ and which have two further characters in their name, and of any file type, i.e. photo_01.jpg, photo_09.tif, etc.

To start the scanning process, do the following:

1. Mark checkboxes to select the disks to be scanned for deleted files. The following information is presented in the list of drives: drive letter, label, amount of free space, total space, file system. The chart of free disk space for the selected disk is on the left. On the chart the red is used space and the green is free space.
2. Under the list of disks is an area to specify wildcard file name (see above to see how to use it). Enter the desired search mask or leave the default value: *.* - finding all deleted files.
3. Click the "Scan" to start the scanning process. After that the process of finding unnecessary files and adding this information to a special database in the utility is

started. The state of scanning process is displayed below showing the folder that is currently scanned. The utility scans your system disk first, and then the others.

Main menu (at the top) of the first window of «Data Recovery» contains the following items:

➡ Main

▷ *Scan* – starts the search for deleted files. Similarly to performed action of "Scan" button.

▷ *Found an error?* – show a window «[Bug \(error\) report](#)». If you have found a critical error or a small bug in WinTuning 7, please let us know. You will help us to find and fix the error. Let's make WinTuning 7 better... together!

▷ *Exit* – close the window of the utility.

➡ Help

▷ *View help* – open help file.

▷ *Quick help* – show/hide the so called «Quick help». Quick help is the area at the main window of a utility in WinTuning 7. You can find short description of the utility in this area. It help you to get started with the utility shortly without opening help file.

▷ *Home page* – open home page of WinTuning 7 in your default browser.

▷ *About* – open «About» window, where you can find the name and version of the utility you are currently using.

After clicking the "Scan" button the searching process window will appear, this is also the window of the results. During the scanning process at the bottom of the window the current scanned disk and number of physical disk sectors are displayed. At any time you can stop the search for deleted files by clicking "Cancel Scan".

At the top left the numbers of found the restored files are shown. In the central area of the window the list of all found deleted files is shown. The columns: drive where the file was located, file name, date of removal (modified), file size in bytes and file type.

In the result window, you can use a filter. Action of this filter is similar to the mask specified in the first window utilities. Enter the desired filter mask, and then click «OK». After that the only files matches the given mask will be displayed. To show all found files again, click "Disable filter".

To restore data check the files you want to restore and click "Restore" button, or use the menu options with the same name (from the "Main" item). This operation opens a window to select the folder to which you want save the selected files.

To start a new scan and loss the result of the current scan, click "New scan" or use the main menu item (from "Main" item). The results window will be closed and instead of it a window for selecting drives for scanning (the first window of the utility) will be shown.

Main menu (at the top) of the second window (results) of «Data Recovery» contains the following items:

➡ Main:

▷ *Restore* – restores all selected files. Similarly to performed action of the button with the same name.

- *New scan* – opens the first window of the utility to start a new scan. Similarly to performed action of the button with the same name.

- *Found an error?* – show a window «[Bug \(error\) report](#)». If you have found a critical error or a small bug in WinTuning 7, please let us know. You will help us to find and fix the error. Let's make WinTuning 7 better... together!

- *Exit* – close the window of the utility.

➡ Selected

- *Recover to a folder...* – restores the highlighted file in the list. In contrast to the "Restore" button it restores not a checked files, but only the file that is currently selected in the list. A similar effect performs by the same named context menu item for the list of deleted files, or by double-clicking on the desired file.

➡ Help

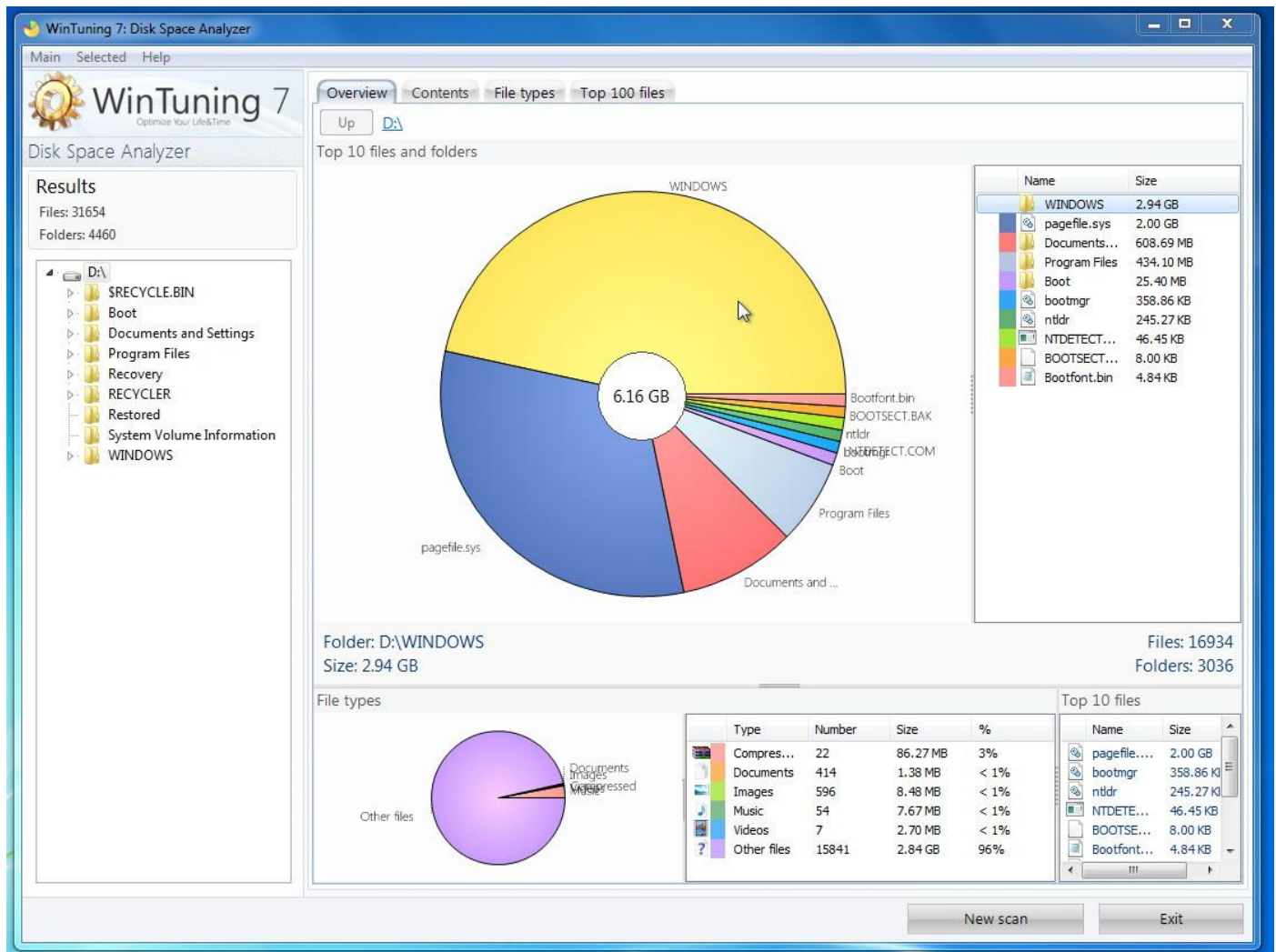
- *View help* – open help file.

- *Quick help* – show/hide the so called «Quick help». Quick help is the area at the main window of a utility in WinTuning 7. You can find short description of the utility in this area. It help you to get started with the utility shortly without opening help file.

- *Home page* – open home page of WinTuning 7 in your default browser.

- *About* – open «About» window, where you can find the name and version of the utility you are currently using.

Disk Space Analyzer



Amount of information take place on modern drives greater than hundreds of gigabytes of data. At the same time, the user requests are growing as fast as drives capacity. Obviously, the management of such a large amount of data is becoming more and more difficult. **WinTuning 7: Disk Space Analyzer** scans disks and displays occupied data in view of charts and tables. This allows you to quickly see which folders and files contained in them occupy most of the space on the disk. According to the results of the scan files you can either delete or move them to CD/DVD-ROM or flash drive.

To start scan do the following steps:

1. Choose one of the options: «Analyze drives» or «Analyze folder». In the first case all disks marked will be scanned, it the second – the program scans only the selected folder and all subfolders. The following information is in the list of drives: drive letter, label, the amount of free space, a full space, file system name. When you click on one of the drives a chart of free disk space for the selected disk is displayed on the left. Red is occupied by all files disk space, green - the remaining amount that can be used to write new files. If you want to scan a folder, you must

specify the full path to the folder in the field, or choose a folder from the pop-up window after clicking the "Select...".

2. Click the "Scan" to start the scanning process.

Main menu (at the top) of the first window of «Disk Space Analyzer» contains the following items:

➡ Main

- ▷ *Analyze* – starts the scan. Similarly to performed action of "Analyze" button.
- ▷ *Found an error?* – show a window «[Bug \(error\) report](#)». If you have found a critical error or a small bug in WinTuning 7, please let us know. You will help us to find and fix the error. Let's make WinTuning 7 better... together!
- ▷ *Exit* – close the window of the utility.

➡ Help

- ▷ *View help* – open help file.
- ▷ *Quick help* – show/hide the so called «Quick help». Quick help is the area at the main window of a utility in WinTuning 7. You can find short description of the utility in this area. It help you to get started with the utility shortly without opening help file.
- ▷ *Home page* – open home page of WinTuning 7 in your default browser.
- ▷ *About* – open «About» window, where you can find the name and version of the utility you are currently using.

After clicking on the "Analyze" the process of scanning all the selected disks (or the selected folder) begins. During the scanning process status is displayed at the bottom of the window:

Scanning "Disk_name". Files found: XXXX,

- where instead of the string " Disk_name" the current label and drive letter are displayed, and instead of XXXX – the total number of files found.

You can stop the scanning process by pressing the button "Cancel Scan".

At the end of the scan in the scan results window information about the space occupied by the hard drive is displayed. At the top left the total number of found files and folders are shown. Under this field the tree structure of folders and drives is displayed. After clicking on the folder you want to view its contents will be displayed in the central part of the window on the "Overview" tab. This tab contains the next areas: top 10 files and folders in the form of charts and tables, statistics on file types and top 10 files. On the "Contents" tab you can see the contents of the selected folder in the form of a table files and folders. Under "Top 100 files" tab you can view files sorted by its size (so you can immediately identify the largest files).

Overview: Top 10 files and folders

In the central part of the window you can find top 10 files and folders occupied on the disk volume for the selected folder. Diagram quickly makes it clear which folder or file takes the most space in this folder on the disk. The table on the right contains the file names of the Top 10 and its exact size. Also these data are available when you move your mouse cursor over any area of the chart. Additionally the information about the total number of files and folders

contained in selected folder at the bottom right is displayed. To view the contents of another folder, you must select it in the folder tree on the left, or you can open it by double clicking on the appropriate chart area. To go up one level from the selected folder, you can press "Up" or use the BackSpace key on your keyboard. To open the selected folder in Windows Explorer, please click on the address of the selected folder above the "Up" button.

Overview: File types

At the bottom of "Overview" tab you can find the statistics by files type. There are 6 types of files:

Archives,
Documents,
Images,
Music,
Video,
Other.

The diagram on the left shows the total volume occupied by files of each file types. The full size in absolute values (bytes) and in the percentage is presented in the table on the right of the chart. Also in this table you can see the number of files of each type.

Overview: Top 10 files

Top 10 files by the size occupied by them in this folder are in this area.

Contents

The contents (files and folders) of the selected folder in the table view are on this tab. The table contains the following columns: name, location, size, % (percent from the total size of the entire scanned area) and the type of object.

File types

Displays a list of files that matches the user specified file types. The list is sorted by files size. To display the files you must select the types of files you want to display in the list and click "Update" button. The table contains the following columns: name, location, size, % (percent from the total size of the entire scanned area), object type, date/time of last access, date/time of last modification, date/time of the file creation, extension.

Top 100 files

Lists the top 100 files sorted by its size. The table contains the following columns: name, location, size, % (percent from the total size of the entire scanned area), object type, date/time of last access, date/time of last modification, date/time of the file creation, extension. With this tab you can immediately identify the largest files on your disks.

Right click on the chart or table to display the popup menu containing the following commands:

- ▶ *Open* (shortcut key Enter) - opens the selected file (or folder).
- ▶ *Open the folder* (shortcut key combination Ctrl + F) - opens a folder containing the object.
- ▶ *Cut* (shortcut key combination Ctrl + X) - cut the object to the clipboard.
- ▶ *Copy* (shortcut key combination Ctrl + C) - copy the object to the clipboard.
- ▶ *Move to Recycle Bin* (shortcut key Delete) - delete the selected object to the Recycle Bin (it can be undone).
- ▶ *Properties* (shortcut key combination Alt + Enter) - opens the properties of the selected object.

To start a new scan and erase the results of the current scan, click "New Scan" button or the main menu item (from "Main" item). The results window will be closed and instead of it the first window will be opened.

Main menu (at the top) of the second window (results) of «Disk Space Analyzer» contains the following items:

➡ Main:

- ▶ *New scan* – opens the first window of the utility to start a new scan. Similarly to performed action of the button with the same name.
- ▶ *Found an error?* – show a window «[Bug \(error\) report](#)». If you have found a critical error or a small bug in WinTuning 7, please let us know. You will help us to find and fix the error. Let's make WinTuning 7 better... together!
- ▶ *Exit* – close the window of the utility.

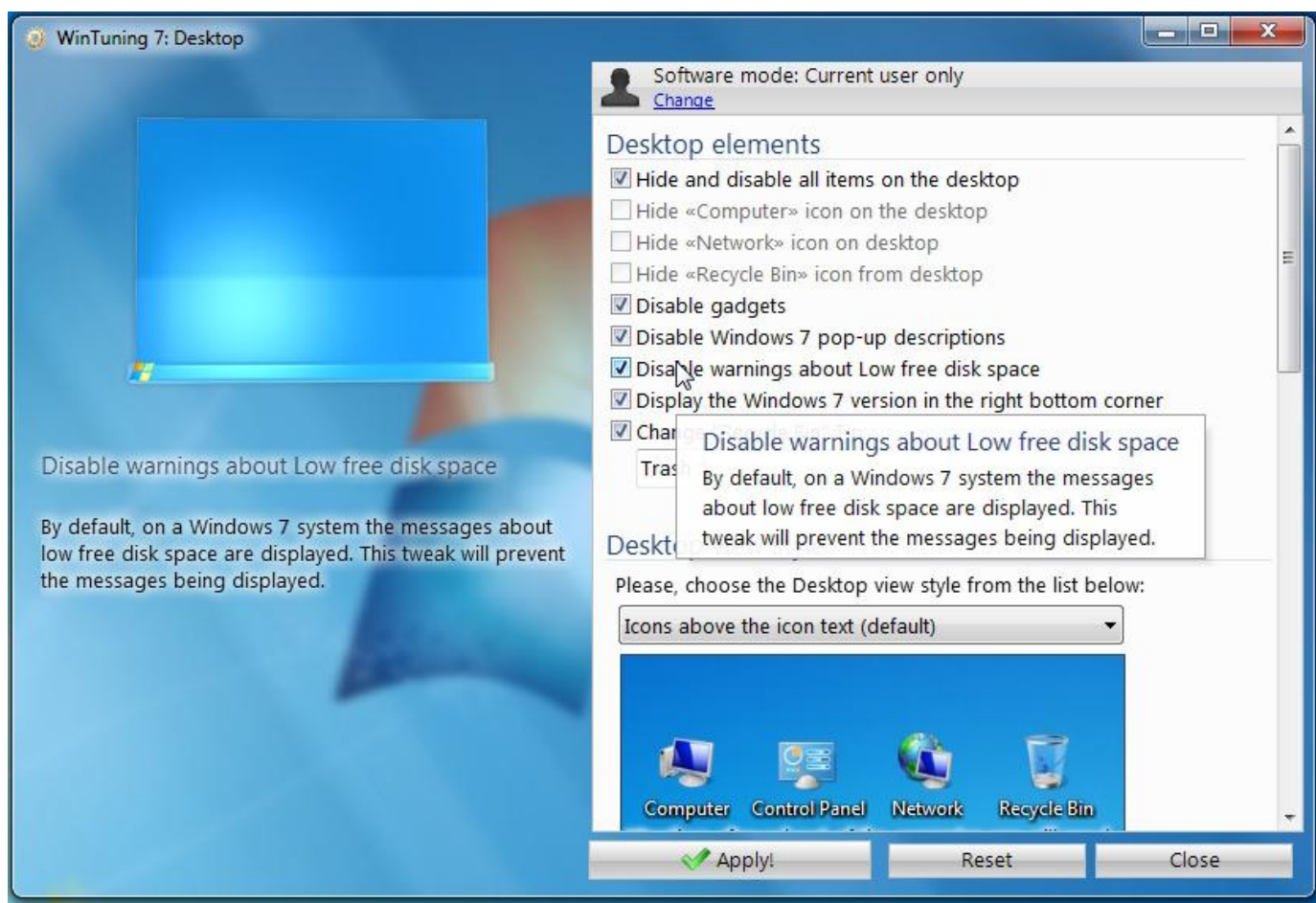
➡ Selected

Fully compliant with the context menu of the selected object (file or folder).

➡ Help

- ▶ *View help* – open help file.
- ▶ *Quick help* – show/hide the so called «Quick help». Quick help is the area at the main window of a utility in WinTuning 7. You can find short description of the utility in this area. It help you to get started with the utility shortly without opening help file.
- ▶ *Home page* – open home page of WinTuning 7 in your default browser.
- ▶ *About* – open «About» window, where you can find the name and version of the utility you are currently using.

Desktop



Configures the parameters of the Desktop and its elements. There are all available options for customization at the right side of the window. Configuring is made by setting up or removing flags (ticks) or by selecting the necessary option from a dropdown list. When the mouse pointer move to any checkbox or combo box a tip is appears at the left of the window, as well as a pop-up help text near the mouse pointer. In some cases a picture tip is displayed instead of the logo on the top left. With this type of tips you'll be able to see what is going to be changed in your OS after the tweak is applied. You can restore the original settings with built-in OS options recovery system. To start the OS Tweaks Reset System, click "Reset" in the options window. More information about the OS Tweaks Reset System, see "[Reset tweaks](#)" and "[System Restore](#)" sections in this guide.

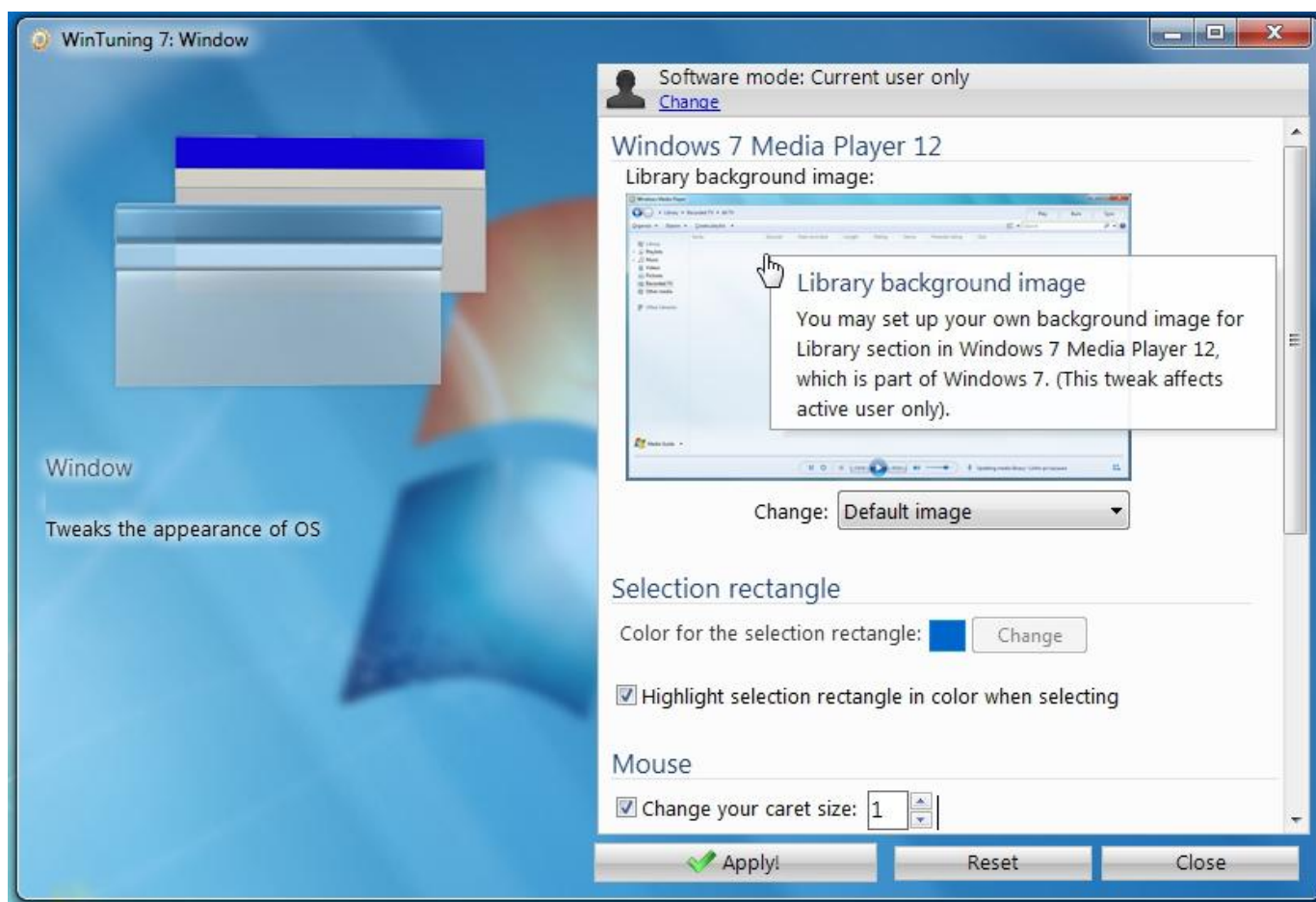
Note: By default, all options affect only the active user, i.e. the user who is currently logged into the system. The program doesn't change any parameter of other users. To change parameters of all users who work with this computer (not just active user, but all of them), please click on «Software mode» button at top of the window. As you have set the working mode to «All users», changes made in WinTuning 7 will affect the parameters of all users. To change this politics back you must select «Current user only» mode. Please note that some of tweaks affect the parameters of all users (or active user only), regardless of which mode is selected. The parameters like that have special comment at the end of its tips.

This utility contains the following tweaks:

Display the Windows version in the right bottom corner

Disable gadgets
Hide and disable all items on the desktop
Disable warnings about Low free disk space
Disable info tip for shortcuts
Disable Screen Saver
Hide «Recycle Bin» icon from desktop
Set background for Desktop (will not be able to change for users)
Hide «Network» icon on desktop
Move wallpaper
Disable «Screen Saver» button
Hide «Computer» icon on the desktop
Restrict Wallpaper selection
Disable Theme selection
Disable Display personalization
Disable «Windows Color» button
Hide «Change desktop icons» link
On resume, display logon screen
«Computer» icon
Change desktop preview mouse hover delay (Aero Peek)
«Recycle Bin» icon

Window



Configures the parameters of windows appearance. There are all available options for customization at the right side of the window. Configuring is made by setting up or removing flags (ticks) or by selecting the necessary option from a dropdown list. When the mouse pointer move to any checkbox or combo box a tip is appears at the left of the window, as well as a pop-up help text near the mouse pointer. In some cases a picture tip is displayed instead of the logo on the top left. With this type of tips you'll be able to see what is going to be changed in your OS after the tweak is applied. You can restore the original settings with built-in OS options recovery system. To start the OS Tweaks Reset System, click "Reset" in the options window. More information about the OS Tweaks Reset System, see "[Reset tweaks](#)" and "[System Restore](#)" sections in this guide.

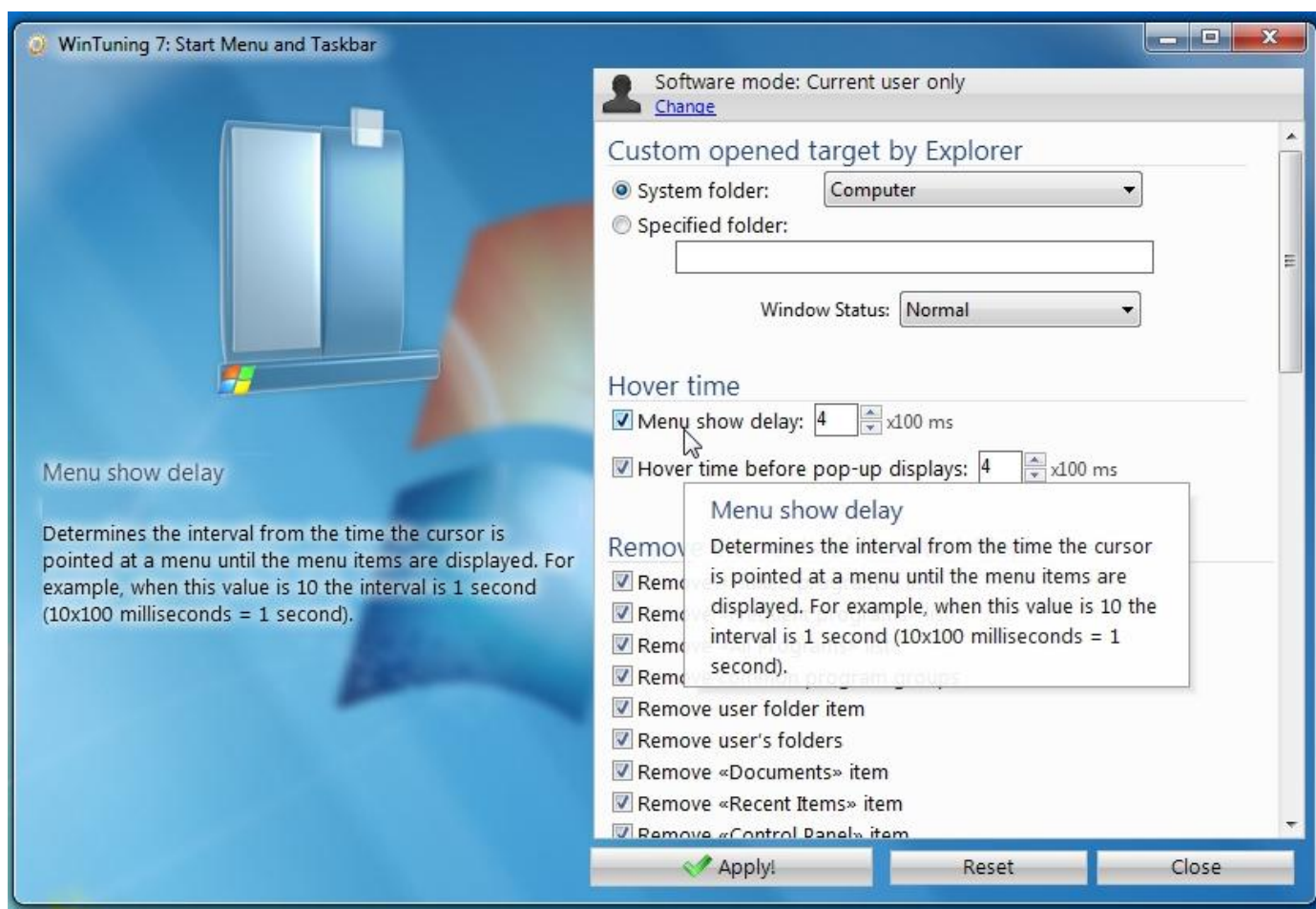
Note: By default, all options affect only the active user, i.e. the user who is currently logged into the system. The program doesn't change any parameter of other users. To change parameters of all users who work with this computer (not just active user, but all of them), please click on «Software mode» button at top of the window. As you have set the working mode to «All users», changes made in WinTuning 7 will affect the parameters of all users. To change this politics back you must select «Current user only» mode. Please note that some of tweaks affect the parameters of all users (or active user only), regardless of which mode is selected. The parameters like that have special comment at the end of its tips.

This utility contains the following tweaks:

Library background image

Disable transparent glass
Disable window animation
Disable 3D windows switcher (3D Alt + Tab)
Disable desktop composition experience
Disable changing frame coloring
Color for the selection rectangle
Change window borders width
Max number of Flip3D windows
Highlight selection rectangle in color when selecting
Change mouse's wheel scroll rate
Change your caret size

Start Menu and Taskbar



Configures the parameters of the Start Menu and Taskbar. There are all available options for customization at the right side of the window. Configuring is made by setting up or removing flags (ticks) or by selecting the necessary option from a dropdown list. When the mouse pointer move to any checkbox or combo box a tip is appears at the left of the window, as well as a pop-up help text near the mouse pointer. In some cases a picture tip is displayed instead of the logo on the top left. With this type of tips you'll be able to see what is going to be changed in your OS after the tweak is applied. You can restore the original settings with built-in OS options recovery system. To start the OS Tweaks Reset System, click "Reset" in the options window. More information about the OS Tweaks Reset System, see "[Reset tweaks](#)" and "[System Restore](#)" sections in this guide.

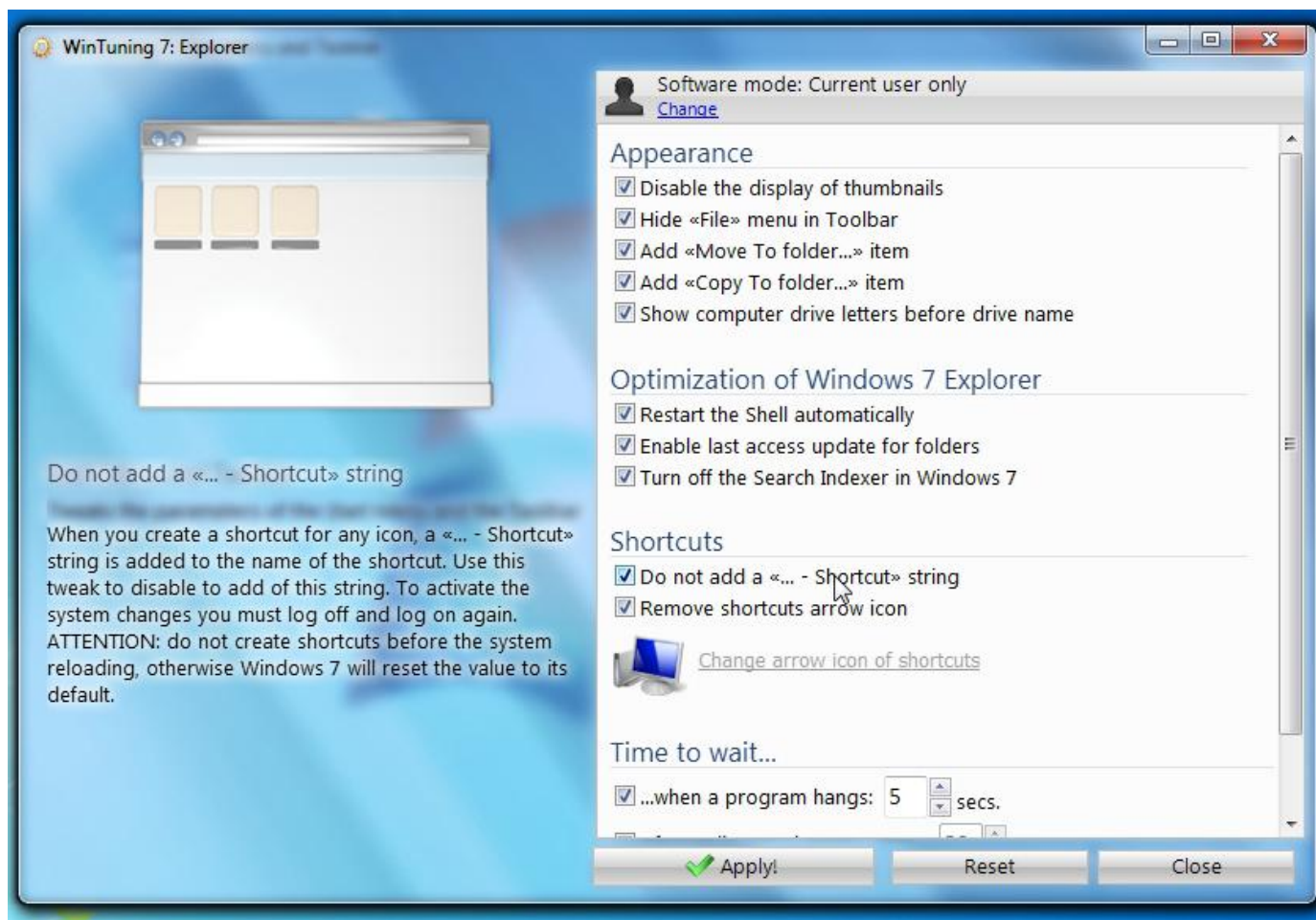
Note: By default, all options affect only the active user, i.e. the user who is currently logged into the system. The program doesn't change any parameter of other users. To change parameters of all users who work with this computer (not just active user, but all of them), please click on «Software mode» button at top of the window. As you have set the working mode to «All users», changes made in WinTuning 7 will affect the parameters of all users. To change this politics back you must select «Current user only» mode. Please note that some of tweaks affect the parameters of all users (or active user only), regardless of which mode is selected. The parameters like that have special comment at the end of its tips.

This utility contains the following tweaks:

Remove «Recent Items» item

Menu show delay
Remove «Help and Support» item
Remove «Favorites» item
Remove «Music» item
Remove «Pictures» item
Remove «Games» item
Remove «Frequent programs» list
Remove «Default Programs» item
Remove the battery meter
Remove «Pinned programs» list
Prevent grouping of taskbar items
Remove «Documents» item
Remove Balloon tips on Start Menu items
Remove common program groups
Remove user folder item
Remove «Connect To» item
Hide the notification area
Turn off notification area cleanup
Remove «Network» item
Remove user's folders
Disable «Log off» item
Do not search Internet
Turn off moving taskbar to another screen dock location
Remove «Run» item
Remove the volume control
Hover time before pop-up displays
Remove the networking icon
Do not search for files
Remove clock from the system notification area
Remove «All Programs» list
Lock the taskbar
Do not search programs and control panel items
Remove and prevent access to the Shut Down etc.
Prevent users from resizing the taskbar
Prevent changes to Taskbar and Start Menu Settings
Remove «Control Panel» item
Do not display any custom toolbars in the taskbar
Remove Drag-and-drop and context menus
Remove access to the context menus for the taskbar
Prevent users from rearranging toolbars
Lock all taskbar settings
Prevent users from adding or removing toolbars

Explorer



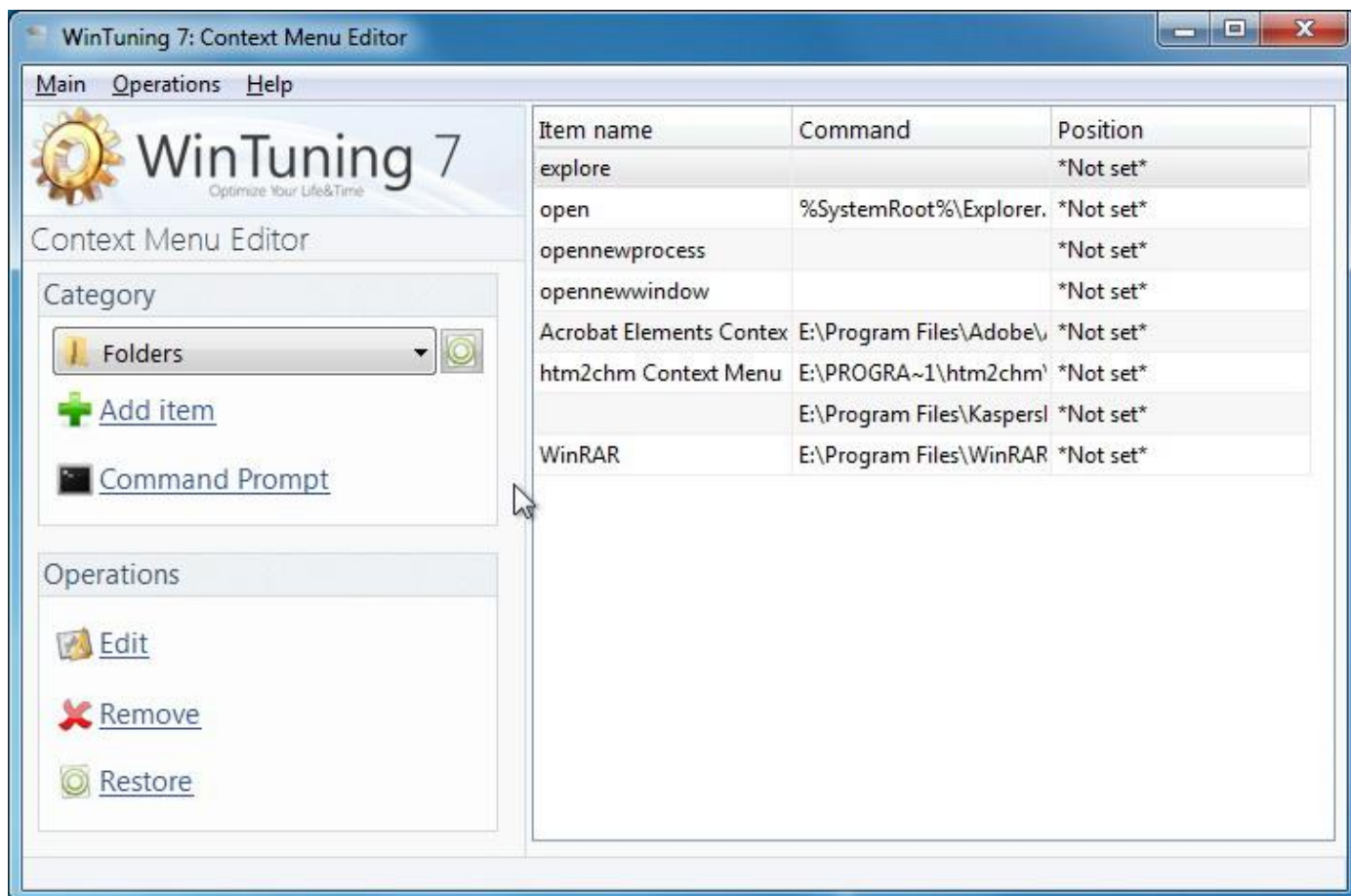
Configures the parameters of the Windows 7 Explorer. There are all available options for customization at the right side of the window. Configuring is made by setting up or removing flags (ticks) or by selecting the necessary option from a dropdown list. When the mouse pointer move to any checkbox or combo box a tip is appears at the left of the window, as well as a pop-up help text near the mouse pointer. In some cases a picture tip is displayed instead of the logo on the top left. With this type of tips you'll be able to see what is going to be changed in your OS after the tweak is applied. You can restore the original settings with built-in OS options recovery system. To start the OS Tweaks Reset System, click "Reset" in the options window. More information about the OS Tweaks Reset System, see "[Reset tweaks](#)" and "[System Restore](#)" sections in this guide.

Note: By default, all options affect only the active user, i.e. the user who is currently logged into the system. The program doesn't change any parameter of other users. To change parameters of all users who work with this computer (not just active user, but all of them), please click on «Software mode» button at top of the window. As you have set the working mode to «All users», changes made in WinTuning 7 will affect the parameters of all users. To change this politics back you must select «Current user only» mode. Please note that some of tweaks affect the parameters of all users (or active user only), regardless of which mode is selected. The parameters like that have special comment at the end of its tips.

This utility contains the following tweaks:

Do not add a «... - Shortcut» string
Change arrow icon of shortcuts
Turn off the Search Indexer in Windows 7
Add «Move To folder...» item
Add «Copy To folder...» item
Show computer drive letters before drive name
Disable the display of thumbnails
Wait before ending programs with errors
Enable last access update for folders
Wait when a program hangs
Wait before ending a hung up service
Restart the Shell automatically
Hide «File» menu in Toolbar

Context Menu



This feature of WinTuning allows it to customize the files, folders, disks and Desktop context menus, which are displayed when you right-click it.

By default the utility displays the context menu of files. To view the context menu of other items click on "Category" on the left. There are 5 categories: Files, Folders, Directories, Drives, Desktop. Select a category to view its contents:

"Item name" - a displayed name for the menu item. Sometimes you can see in this column a localized string such as «@ shell32.dll, -8506». It means that the string is read from the resource file shell32.dll, resource number 8506. You can also specify the name strings by this way.

"Command" – the command that is executed when click on the context menu item. In some cases this column is empty: such items are not recommended to edit or remove as they most likely are system.

"Position" - by default, all items are displayed in random order in the context menu (but system commands always at the top). But you can set here the display order of the item (top, middle, bottom).

In the "Category" area you can find buttons to perform the following actions on the selected category of the context menu:

- "Add item" - opens a window to add a new context menu item in the selected category. You need to enter a name, enable or disable icon visible (if available), enter the command to be

executed by pressing the menu item and specify the location of the item: at the top, middle, or bottom of the context menu.

- "Command Prompt"- quickly add an item to run the command prompt window to the context menu of the selected category.

The following actions on the selected item of the context menu are in the "Operations" area:

- "Edit" - opens a window for editing the selected item in the context menu (similar to the window of adding the menu item - see above).
- "Remove" - removes the selected item from the context menu of the selected category. Then you can restore the item by restoring the entire category. To restore the category please press the "Restore all default items for the selected category" button on the right of the selected category caption.
- "Restore" - restores the name of the selected item to its original value (available not for all items).

The list of items of the selected category has its own context menu which is completely the same as the buttons of the "Operations" area.

Main menu (at the top) of the «Context Menu» window contains the following items:

➡ Main

- *Category* – There are five categories of the context menu. You can choose one from the sub-menu here (similar to the "Category" area).
- *Restore all default items for the selected category* – restores all menu items for the selected category to default state (before the first run the utility).
- *Found an error?* – show a window «[Bug \(error\) report](#)». If you have found a critical error or a small bug in WinTuning 7, please let us know. You will help us to find and fix the error. Let's make WinTuning 7 better... together!
- *Exit* – close the window of the utility.

➡ Operations – items in this menu are completely the same as of the "Category" and "Operation" areas.

➡ Help

- *View help* – open help file.
- *Quick help* – show/hide the so called «Quick help». Quick help is the area at the main window of a utility in WinTuning 7. You can find short description of the utility in this area. It help you to get started with the utility shortly without opening help file.
- *Home page* – open home page of WinTuning 7 in your default browser.
- *About* – open «About» window, where you can find the name and version of the utility you are currently using.

Control Panel Items Manager



With this utility you can create any Item of the Windows Control Panel (CP) in any folder of your hard disk. You can also add the Control Panel item to the Computer window. There is a list of the control panel items in the central part of the window. To display an item of the Control Panel in "Computer" window (Win + E keyboard shortcut) select it and click on "Update Computer". To create a Control Panel item in any location of your hard drive please select the item from the list and click "Create new" button at the top left. It opens a window for selecting the folder in which the new item will be created.

Main menu (at the top) of the «Control Panel Items Manager» window contains the following items:

➔ Main

- *Update Computer* – saves all settings: view all selected items and hide all unselected items in the Computer window.
- *Found an error?* – show a window «[Bug \(error\) report](#)». If you have found a critical error or a small bug in WinTuning 7, please let us know. You will help us to find and fix the error. Let's make WinTuning 7 better... together!
- *Exit* – close the window of the utility.

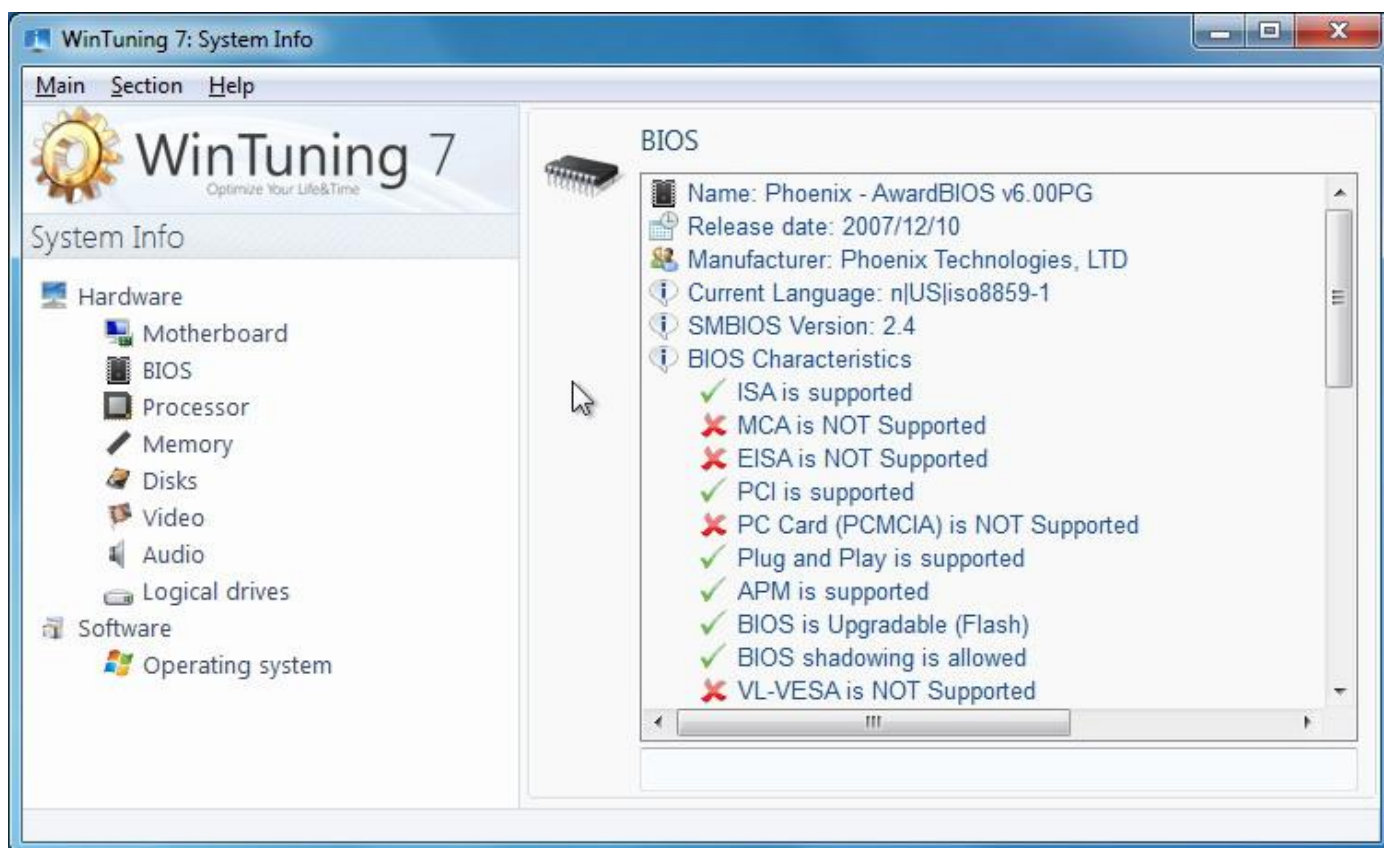
➔ Operations

- *Create new* – it opens a window for selecting the folder in which the new item will be created.

➡ Help

- ▷ *View help* – open help file.
- ▷ *Quick help* – show/hide the so called «Quick help». Quick help is the area at the main window of a utility in WinTuning 7. You can find short description of the utility in this area. It help you to get started with the utility shortly without opening help file.
- ▷ *Home page* – open home page of WinTuning 7 in your default browser.
- ▷ *About* – open «About» window, where you can find the name and version of the utility you are currently using.

System Information



System Information scans your computer and collects all sorts of facts and information about your hardware and software. This information is important if you wish to upgrade your computer or if an engineer asks you whether certain components are installed on your computer. All information is divided into categories.

Hardware

Motherboard

BIOS

Processor

Memory

Disks

Video

Audio

Logical drives

Software

Operating system

You can select a string in the information window and then copy the string from the field at the bottom to the Clipboard.

Main menu (at the top) of the «System Information» window contains the following items:

➡ Main

▸ *Found an error?* – show a window «[Bug \(error\) report](#)». If you have found a critical error or a small bug in WinTuning 7, please let us know. You will help us to find and fix the error. Let's make WinTuning 7 better... together!

▸ *Exit* – close the window of the utility.

➡ Section – items in this menu are completely the same as the items of the categories list on the left.

➡ Help

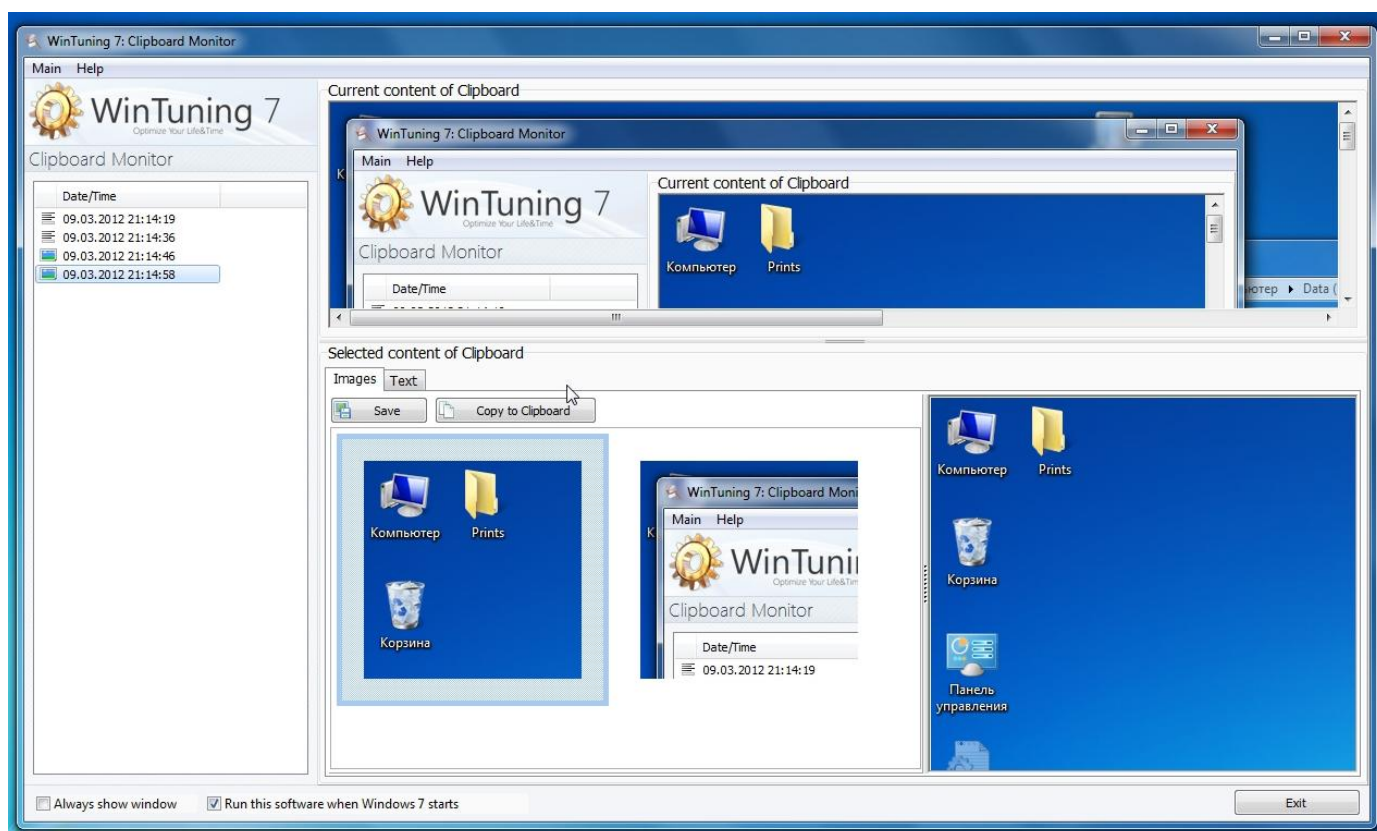
▸ *View help* – open help file.

▸ *Quick help* – show/hide the so called «Quick help». Quick help is the area at the main window of a utility in WinTuning 7. You can find short description of the utility in this area. It help you to get started with the utility shortly without opening help file.

▸ *Home page* – open home page of WinTuning 7 in your default browser.

▸ *About* – open «About» window, where you can find the name and version of the utility you are currently using.

Clipboard Monitor



With this utility you can see content of the Windows Clipboard in realtime. It supports text and images.

The date and time of text and images were added to the Clipboard is shown on the left side. The current contents of the clipboard are shown at top part of the main window.

The central part contains two tabs: "Images" and "Text." The left side of the "Images" contains thumbnails of all images that have been added to the clipboard (provided that the utility was running at that moment). To view images click on a thumbnail, and then on the right side you will see full-sized image. This image can be re-copied to the clipboard or saved to file (using the appropriate buttons or the keyboard shortcut Ctrl+C and Ctrl+S, respectively). In the "text" tab textual information that has been added to the Clipboard is present. The contents of the selected text are shown in the right pane.

Main menu (at the top) of the «Clipboard Monitor» window contains the following items:

➔ Main

▸ *Found an error?* – show a window «[Bug \(error\) report](#)». If you have found a critical error or a small bug in WinTuning 7, please let us know. You will help us to find and fix the error. Let's make WinTuning 7 better... together!

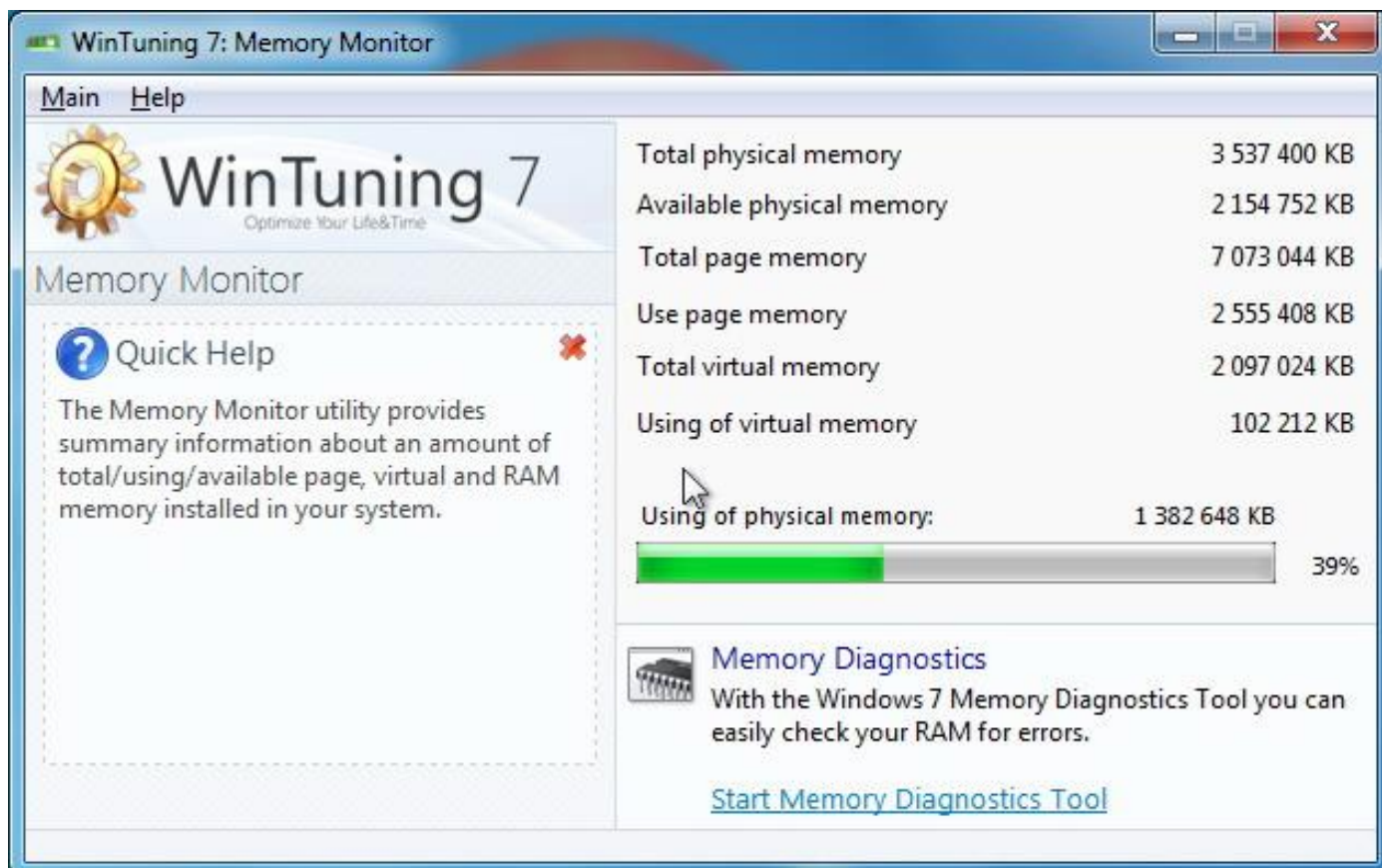
▸ *Exit* – close the window of the utility.

➔ Help

▸ *View help* – open help file.

- *Quick help* – show/hide the so called «Quick help». Quick help is the area at the main window of a utility in WinTuning 7. You can find short description of the utility in this area. It help you to get started with the utility shortly without opening help file.
- *Home page* – open home page of WinTuning 7 in your default browser.
- *About* – open «About» window, where you can find the name and version of the utility you are currently using.

Memory Monitor



The Memory Monitor utility provides summary information about an amount of total/using/available page, virtual and RAM memory installed in your system. Information of physical (RAM) memory you can see as the loading bar or as a percentage amount (100% = total physical memory).

All values are in kilobytes (KB):

$1Gb = 1024Mb$

$1Mb = 1024Kb$

$1Kb = 1024 \text{ bytes}$.

More information about the used units of information measurement can be found here: <http://en.wikipedia.org/wiki/Byte>.

When you click on "Start Memory Diagnostics tool" the utility that allows you to test your RAM for errors is running. For more information on this utility press the F1 key after opening the main window of the diagnostics utility.

Main menu (at the top) of the «Memory Monitor» window contains the following items:

➔ Main

▸ *Start Memory Diagnostics tool* – performed action of this item is the same as the action of the same called link in the main window of the utility (see above).

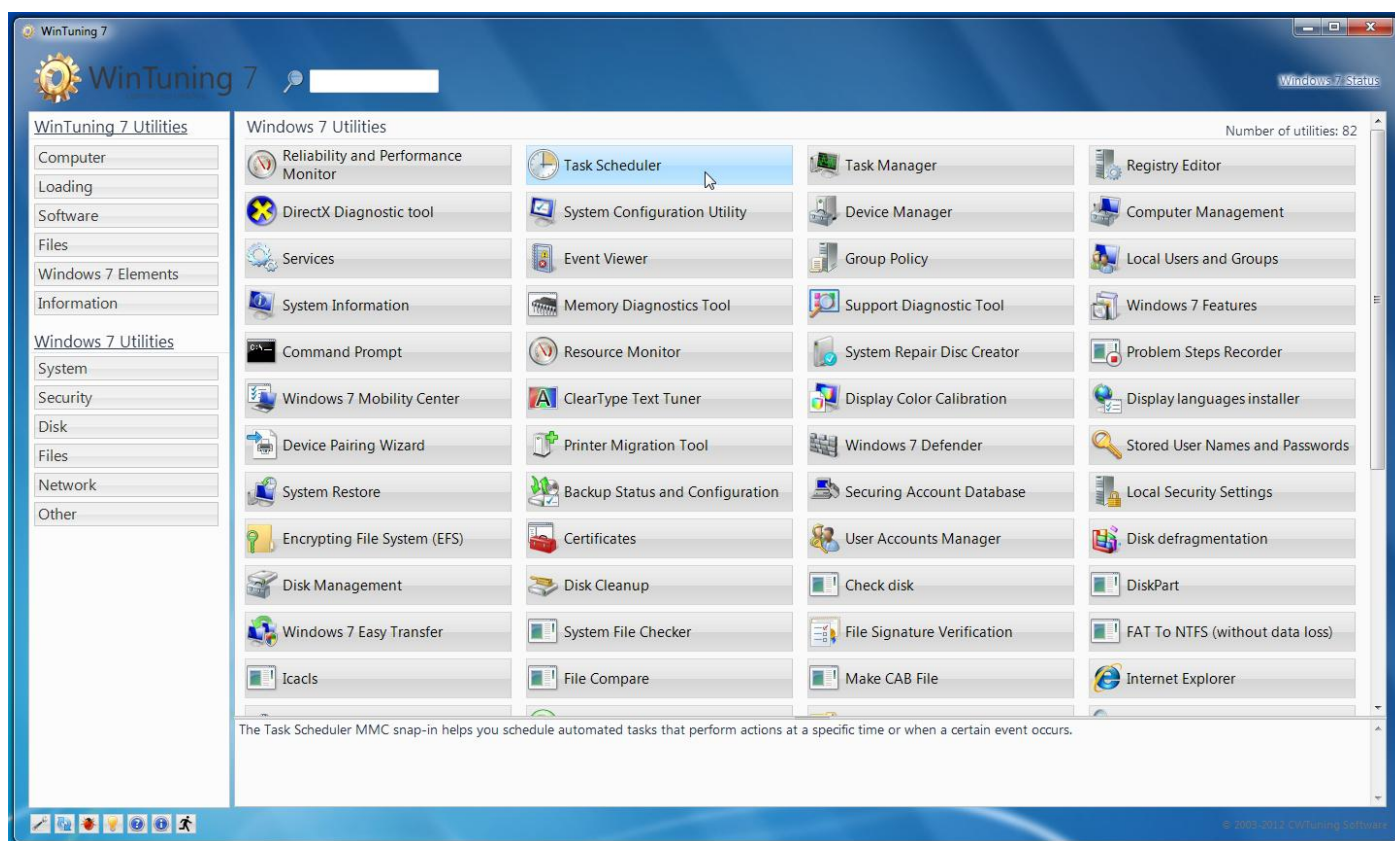
▸ *Found an error?* – show a window «[Bug \(error\) report](#)». If you have found a critical error or a small bug in WinTuning 7, please let us know. You will help us to find and fix the error. Let's make WinTuning 7 better... together!

- *Exit* – close the window of the utility.

➔ Help

- *View help* – open help file.
- *Quick help* – show/hide the so called «Quick help». Quick help is the area at the main window of a utility in WinTuning 7. You can find short description of the utility in this area. It help you to get started with the utility shortly without opening help file.
- *Home page* – open home page of WinTuning 7 in your default browser.
- *About* – open «About» window, where you can find the name and version of the utility you are currently using.

Windows 7 Utilities



Windows 7 comes with a lot of utilities which are either hidden in the depths of the Start Menu or not even listed there. Windows 7 Utilities gives you easy access to such applications. Description about each utility is shown for all of them. There are more than 80 Windows 7 Utilities in the list.

To run a utility of Windows 7, please select one of six categories from the list on the left:

- [System](#);
- [Security](#);
- [Disk](#);
- [Files](#);
- [Network](#);
- [Other](#).

After selecting a category a list of all the utilities of the category is displayed in the main area of utility's window. Names of utilities are green highlighted; it displays a detailed description under the names. To run a utility, select it from the list and click "Run Selected!", or simply double-click on the utility.

A list of all available utilities of Windows 7:

System

Reliability and Performance Monitor

You can use Windows 7 Performance Monitor to examine how programs you run affect your computer's performance, both in real time and by collecting log data for later analysis.

Task Scheduler

The Task Scheduler MMC snap-in helps you schedule automated tasks that perform actions at a specific time or when a certain event occurs.

Task Manager

Task Manager displays the programs, processes, and services that are currently running on your computer. You can use Task Manager to monitor your computer's performance or to close a program that's not responding.

Registry Editor

System configuration information is stored centrally in a hierarchical database called the registry. You can use Registry Editor to add and edit registry keys and values, restore the registry from a backup or to default values, and to import or export keys for reference or backup. Additional information including the general concepts and information about the Registry see the website of Windows Server TechCenter:

<http://go.microsoft.com/fwlink/?LinkID=53495>.

DirectX Diagnostic tool

If you're having problems getting a game or movie to play properly, the DirectX Diagnostic Tool can help you pinpoint the source. DirectX is a suite of technologies used by many of the multimedia programs in Windows 7.

System Configuration Utility

System Configuration is a tool that can help identify problems that might prevent Windows 7 from starting correctly. You can start Windows 7 with common services and startup programs turned off and then turn them back on, one at a time. If a problem doesn't occur when a service is turned off, but does occur when that service is turned on, then the service could be the cause of the problem.

Device Manager

You can use Device Manager to install and update the drivers for hardware devices, change the hardware settings for those devices, and troubleshoot problems. A device driver is software that allows Windows 7 to communicate with a specific hardware device. Before Windows 7 can use any new hardware, a device driver must be installed.

Computer Management

Microsoft Management Console (MMC) hosts administrative tools that you can use to administer networks, computers, services, and other system components.

Services

You can use the Services Microsoft Management Console (MMC) snap-in to manage services that are running on local or remote computers — for example, to stop or start a service.

Event Viewer

The Event Viewer is a Microsoft Management Console (MMC) snap-in that enables you to browse and manage event logs. It is an indispensable tool for monitoring the health of systems and troubleshooting issues when they arise:

<http://technet.microsoft.com/en-us/library/cc766042.aspx>.

Group Policy

The Local Group Policy Editor is a Microsoft Management Console (MMC) snap-in that provides a single user interface through which all the settings of Local Group Policy objects can be managed. <http://go.microsoft.com/fwlink/?LinkId=139815>.

Local Users and Groups

Use Local Users and Groups to create and manage users and groups that are stored locally on a computer.

System Information

System Information (also known as msinfo32.exe) shows details about your computer's hardware configuration, computer components, and software, including drivers.

Memory Diagnostics Tool

If Windows 7 detects possible problems with your computer's memory, it will prompt you to run the Memory Diagnostics Tool.

Support Diagnostic Tool

You can use the Microsoft Support Diagnostic Tool to collect information about problems you might be experiencing with your computer. You can then use the tool to send the information to Microsoft Support over the Internet. If you contact Microsoft Support as part of a support request, your support professional might ask you to use the tool to help determine the cause of the problem. The tool can help Microsoft Support solve problems more efficiently than by diagnosing over the phone or by using e-mail.

Windows 7 Features

To turn a feature off in earlier versions of MSWin, you had to uninstall it completely from your computer. In Windows 7, the features remain stored on your hard disk so you can turn them back on if you want to. Use this utility to turn off or turn on Windows 7 Features. Turning off a feature does not uninstall the feature, and it does not reduce the amount of hard disk space used by Windows 7 features.

Command Prompt

cmd.exe or command prompt is the command-line interpreter on Windows 7.

Resource Monitor

Windows 7 Resource Monitor is a system tool that allows you to view information about the use of hardware (CPU, memory, disk, and network) and software (file handles and modules) resources in real time.

System Repair Disc Creator

A system repair disc can be used to boot your computer. It also contains Windows 7 system recovery tools that can help you recover Windows 7 from a serious error or restore your computer from a system image.

Problem Steps Recorder

You can use Problem Steps Recorder to automatically capture the steps you take on a computer, including a text description of where you clicked and a picture of the screen during each click (called a screen shot). Once you capture these steps, you can save them to a file that can be used by a support professional or someone else helping you with a computer problem.

Windows 7 Mobility Center

Windows 7 Mobility Center puts the most frequently used mobile PC settings in a single, easy-to-find location.

ClearType Text Tuner

ClearType is a software technology developed by Microsoft that improves the readability of text on existing LCDs (Liquid Crystal Displays), such as laptops screens, Pocket PC screens and flat panel monitors. With ClearType font technology, the words on your computer screen look almost as sharp and clear as those printed on a piece of paper.

Display Color Calibration

You can improve the color on your display by using Display Color Calibration to make sure that colors appear accurately.

Display languages installer

Display languages allow Windows 7 to display text in your chosen language and where supported recognize speech and handwriting.

Device Pairing Wizard

Select a device to add to this computer.

Printer Migration Tool

Export/Import printer queues and printer drivers to/from a file.

Control Panel

The Control Panel is a part of the Microsoft Windows 7 graphical user interface which allows users to view and manipulate basic system settings and controls via applets, such as adding hardware, adding and removing software, controlling user accounts, and changing accessibility options.

Security

Windows 7 Defender

Windows 7 Defender is antispyware software that's included with Windows 7 and runs automatically when it's turned on. Using antispyware software can help protect your computer against spyware and other potentially unwanted software. Spyware can be installed on your computer without your knowledge any time you connect to the Internet, and it can infect your computer when you install some programs using a CD, DVD, or other removable media. Spyware can also be programmed to run at unexpected times, not just when it's installed.

<http://www.microsoft.com/windows/products/winfamily/defender/default.mspx>.

Stored User Names and Passwords

Back up or restore your stored user names and passwords.

System Restore

System Restore helps you restore your computer's system files to an earlier point in time. It's a way to undo system changes to your computer without affecting your personal files, such as e-mail, documents, or photos. System Restore uses a feature called system protection to regularly create and save restore points on your computer. These restore points contain information about registry settings and other system information that Windows 7 uses. You can also create restore points manually.

Backup Status and Configuration

Windows 7 provides the following backup tools: File backup, System image backup, Previous versions, System Restore. With this utility you can control these tools.

Securing Account Database

This tool will allow you to configure the Account Database to enable additional encryption, further protecting the database from compromise.

Local Security Settings

The Local Security Settings Editor is a Microsoft Management Console (MMC) snap-in that provides a single user interface through which all the settings of Local Security Policy objects can be managed.

Encrypting File System (EFS)

Use this wizard to: select or create a file encryption certificate and key; back up the certificate and key to avoid losing access to your encrypted files; set Encrypting File System to use a smart card; update previously encrypted files to use a different certificate and key.

Certificates

The role of digital certificates is growing rapidly on individual computers and networks and across the Internet. Although certificates can be used with little or no user intervention, it

can also be important to view and understand certificate contents, and to manage their use. You can accomplish these goals by using the Certificates snap-in.

User Accounts Manager

Use the User Account Manager to grant or deny users access to your computer, to change passwords and other settings.

Disk

Disk defragmentation

Fragmentation makes your hard disk do extra work that can slow down your computer. Removable storage devices such as USB flash drives can also become fragmented. Disk Defragmenter rearranges fragmented data so your disks and drives can work more efficiently. Disk Defragmenter runs on a schedule, but you can also analyze and defragment your disks and drives manually.

Disk Management

You can use Disk Management in Windows 7 to perform disk-related tasks such as creating and formatting partitions and volumes, and assigning drive letters.

Disk Cleanup

If you want to reduce the number of unnecessary files on your hard disk to free up disk space and help your computer run faster, use Disk Cleanup. It removes temporary files, empties the Recycle Bin, and removes a variety of system files and other items that you no longer need.

Check disk

Chkdsk (Chkdsk.exe) is a command-line tool that checks volumes for problems. The tool then tries to repair any that it finds. For example, Chkdsk can repair problems related to bad sectors, lost clusters, cross-linked files, and directory errors. To use Chkdsk, you must log on as an administrator or as a member of the Administrators group.

DiskPart

You can use this utility to enable storage configuration from a script, a remote session, or another command prompt. Diskpart enhances the Disk Administrator graphical user interface (GUI). More information about Diskpart: <http://support.microsoft.com/kb/325590>.

Files

Windows 7 Easy Transfer

Windows 7 Easy Transfer lets you copy files and settings from one computer to another.

System File Checker

The System File Checker tool gives an administrator the ability to scan all of the protected files to verify their versions. More information about SFC:

<http://support.microsoft.com/kb/310747>.

File Signature Verification

To help maintain the integrity of your system, critical files have been digitally signed so that any changes to these files can be quickly detected.

FAT To NTFS (without data loss)

It is easy to convert partitions to NTFS. The utility makes conversion easy, whether your partitions used FAT, FAT32, or the older version of NTFS. This kind of conversion keeps your files intact (unlike formatting a partition). More information about FAT to NTFS:

<http://technet.microsoft.com/en-us/library/bb456984.aspx>.

Iccls

Iccls.exe is a Windows 7 command-line tool you can use to backup ACLs (access control lists).

File Compare

Compares two files or sets of files and displays the differences between them.

Make CAB File

Cabinet Maker - Lossless Data Compression Tool. Using Cabinets and Compressed Sources: <http://msdn.microsoft.com/en-us/library/aa372406.aspx>.

Network

Internet Explorer

Microsoft Internet Explorer is a series of graphical web browsers developed by Microsoft and included as part of the MSWin line of operating systems starting in 1995. Go to Home page: <http://www.microsoft.com/windows/internet-explorer/>.

Windows 7 Remote Assistance

Windows 7 Remote Assistance connects two computers so that one person can help troubleshoot or fix problems on the other person's computer.

Sync Center

Sync Center allows you to check the results of your recent sync activity if you've set up your computer to sync files with a network server. This allows you to access copies of your network files even when your computer isn't connected to the network. Sync Center can tell you if the files synced successfully or if there are any sync errors or warnings.

Create Shared Folders

This wizard helps you share a computer folder so that it can be accessed by people on other computers in your network or workgroup.

Remote Desktop Connection

Remote Desktop Connection is a technology that allows you to sit at a computer (sometimes called the client computer) and connect to a remote computer (sometimes called the host computer) in a different location. For example, you can connect to your work computer from your home computer and have access to all of your programs, files, and network resources as though you were in front of your computer at work. You can leave programs running at work and then, when you get home, you can see your work computer's desktop displayed on your home computer, with the same programs running.

Windows 7 Update

Updates can enhance the security and performance of your computer.

Shared Folders

You can use the Shared Folders Microsoft Management Console (MMC) snap-in to centrally manage file shares on a computer. Shared Folders enables you to create file shares and set permissions, as well as view and manage open files and users connected to file shares on the computer.

Ping

Verifies IP-level connectivity to another TCP/IP computer by sending Internet Control Message Protocol (ICMP) Echo Request messages. The receipt of corresponding Echo Reply messages are displayed, along with round-trip times. Ping is the primary TCP/IP command used to troubleshoot connectivity, reachability, and name resolution.

Route

Even a single-homed TCP/IP host has to make routing decisions. These routing decisions are controlled by the route table. The route table can be displayed by this tool.

NS LookUp

Nslookup.exe is a command-line administrative tool for testing and troubleshooting DNS servers. Using NSlookup.exe:

<http://support.microsoft.com/kb/200525/en-us>.

Finger

Displays information about a user or users on a specified remote computer (typically a computer running UNIX) that is running the Finger service or daemon. The remote computer specifies the format and output of the user information display.

Netstat

Displays active TCP connections, ports on which the computer is listening, Ethernet statistics, the IP routing table, IPv4 statistics (for the IP, ICMP, TCP, and UDP protocols), and IPv6 statistics (for the IPv6, ICMPv6, TCP over IPv6, and UDP over IPv6 protocols).

Commands Scheduler (AT)

The AT command schedules commands and programs to run on a computer at a specified time and date. The Schedule service must be running to use the AT command.

Net

The Net.exe Utility component is a command-line tool that controls users, groups, services, and network connections. More information about Net.exe:

<http://msdn.microsoft.com/en-us/library/aa939914.aspx>.

IPConfig

ipconfig (internet protocol configuration) in Microsoft Windows 7 is a console application that displays all current TCP/IP network configuration values and can modify Dynamic Host Configuration Protocol DHCP and Domain Name System DNS settings.

GetMAC

Returns the media access control (MAC) address and list of network protocols associated with each address for all network cards in each computer, either locally or across a network.

Other

Windows 7 Activation

Activation helps verify that your copy of Windows 7 is genuine. With a genuine copy of Windows 7, you are eligible to receive all available updates and product support from Microsoft.

Sticky Notes

You can use Sticky Notes to write a to-do list, jot down a phone number, or do anything else that you'd use a pad of paper for. You can use Sticky Notes with a tablet pen or a standard keyboard. To write a note using a tablet pen, simply start writing on the note where you want the ink to appear. To type a note, click where you want the text to appear, and then start typing.

Snipping Tool

You can use Snipping Tool to capture a screen shot, or snip, of any object on your screen, and then annotate, save, or share the image.

DPI Scaling

You can make the text and other items, such as icons, on your screen easier to see by making them larger. You can do this without changing the screen resolution of your monitor or laptop screen. This allows you to increase or decrease the size of text and other items on your screen while keeping your monitor or laptop set to its optimal resolution.

DVD Maker

Windows 7 DVD Maker is a feature you can use to make DVDs that you can watch on a computer or on a TV using a regular DVD player.

Paint

Paint is a feature in Windows 7 that you can use to create drawings on a blank drawing area or in existing pictures.

Calculator

You can use Calculator to perform simple calculations such as addition, subtraction, multiplication, and division. Calculator also offers the advanced capabilities of a programming, scientific, and statistical calculator.

Magnifier

Magnifier enlarges different parts of the screen. This is especially useful for viewing objects that are difficult to see, but also for seeing the whole screen more easily.

Sound Recording

You can use Sound Recorder to record a sound and save it as an audio file on your computer. You can record sound from different audio devices, such as a microphone that's plugged into the sound card on your computer.

On-Screen Keyboard

Instead of relying on the physical keyboard to type and enter data, you can use On-Screen Keyboard. On-Screen Keyboard displays a visual keyboard with all the standard keys. You can select keys using the mouse or another pointing device, or you can use a single key or group of keys to cycle through the keys on the screen.

Narrator

Windows 7 comes with a basic screen reader called Narrator, which reads text on the screen aloud and describes some events (such as an error message appearing) that happen while you're using the computer.

Private Character Editor

You can use Private Character Editor to create your own characters, which you can then insert into documents by using Character Map.

Character Map

A special character is a character that can't be found on your keyboard. You can insert special characters by using Character Map or by pressing a combination of keys on your keyboard.

Create self-extracting package

This wizard will help you create a self-extracting / self-installing package.

Result Set of Policy

You can use the RSoP snap-in to create detailed reports about applied policy settings.

Windows 7 Management Infrastructure (WMI)

Windows 7 Management Instrumentation (WMI) Control is a tool that enables you to configure WMI settings on a remote or local computer. Using WMI Control, you can perform the following tasks: Back up the repository, Change the default namespace for scripting, Authorize users or groups and set permission levels.

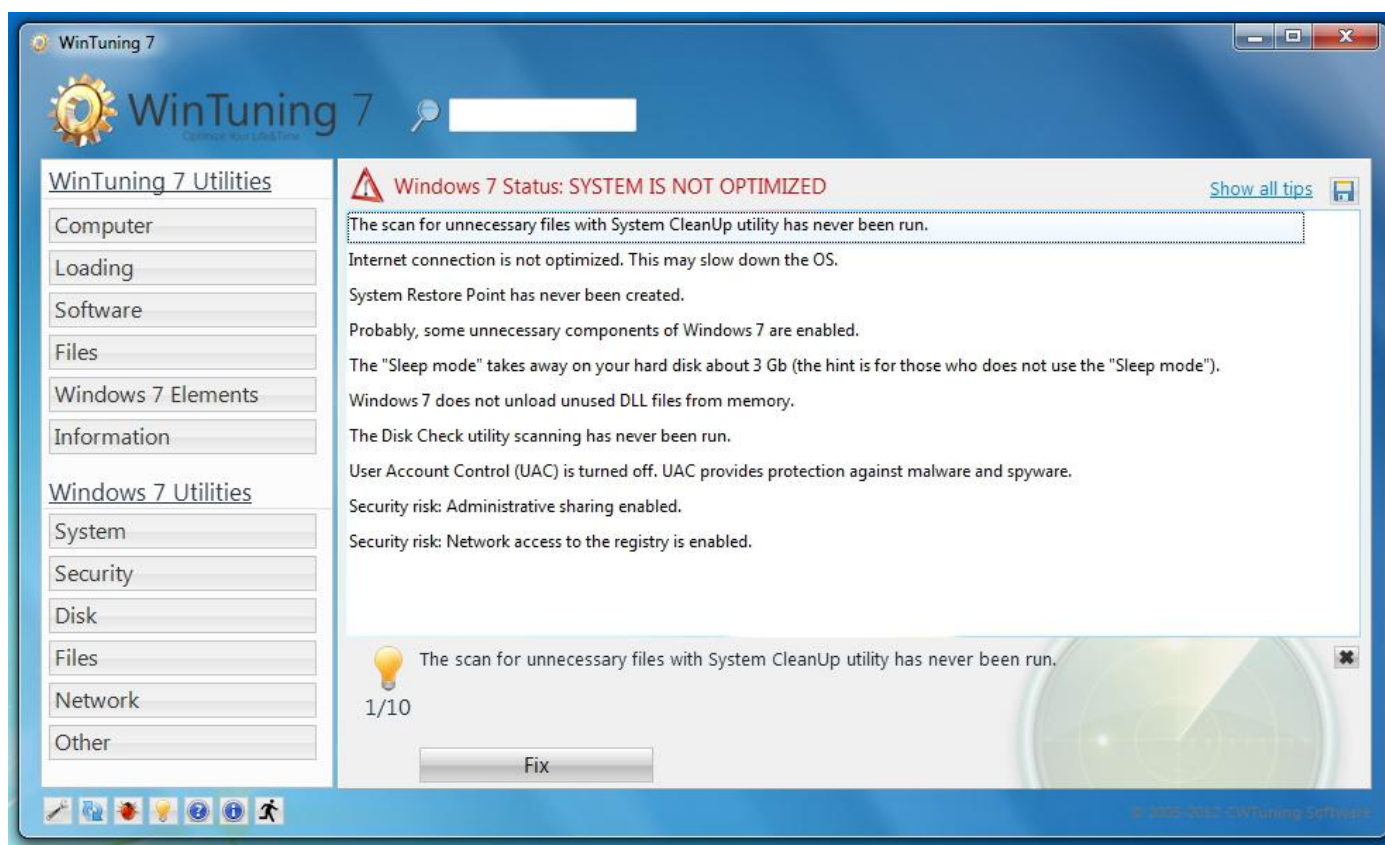
ODBC Data Source Administrator

An ODBC User data source stores information about how to connect to the indicated data provider.

Windows 7 Script Host Settings

The Microsoft Windows 7 Script Host is an automation technology for Microsoft Windows 7 operating systems that provides scripting capabilities comparable to batch files, but with a greater range of supported features.

Windows 7 Status



WinTuning 7 allows you to track the status of Windows 7, diagnosing the system errors and displaying the recommendations on optimization of Windows 7.

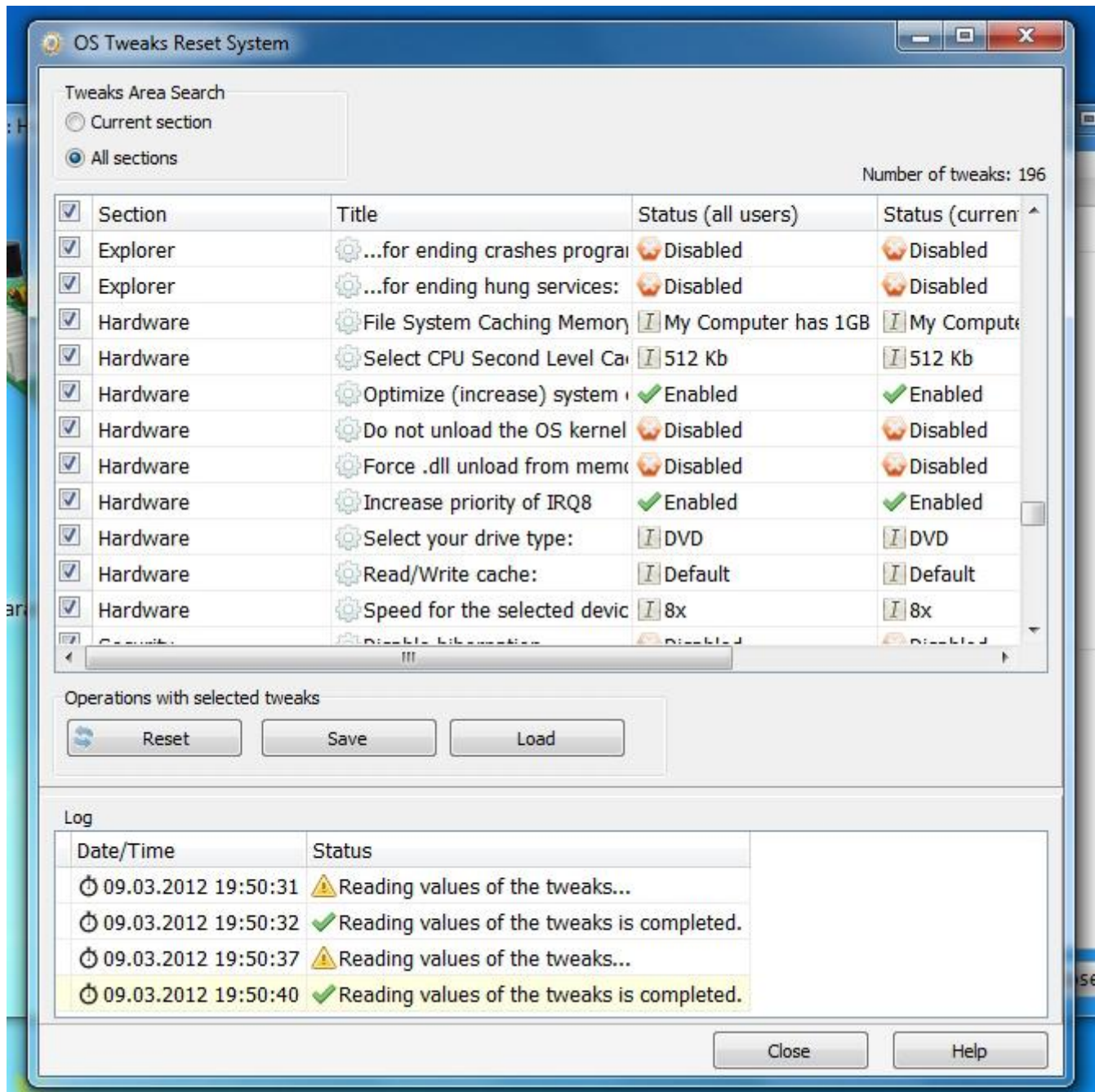
You can view current status of Windows 7 in main window of the program. It provides a list of tips for optimizing the system and information about founded security risks. If you have any tips, you will see "SYSTEM IS NOT OPTIMIZED," painted in red color. If the Windows 7 Status is not shown, you can show it again by clicking on so-named link.

To apply a recommendation, double-click the tip or select the recommendation and click "Fix". If you believe that a recommendation does not important for you, select it and click the button with cross "Hide this tip". The selected recommendations (hint) will be hidden from the list and will no longer be shown as long as you do not restore all hidden tips. To display all hidden tips, click on "Show all tips" at right top of the window.

By selecting a recommendation, its text is displayed at the bottom, as well as its number, and - after a slash - the total number of recommendations.

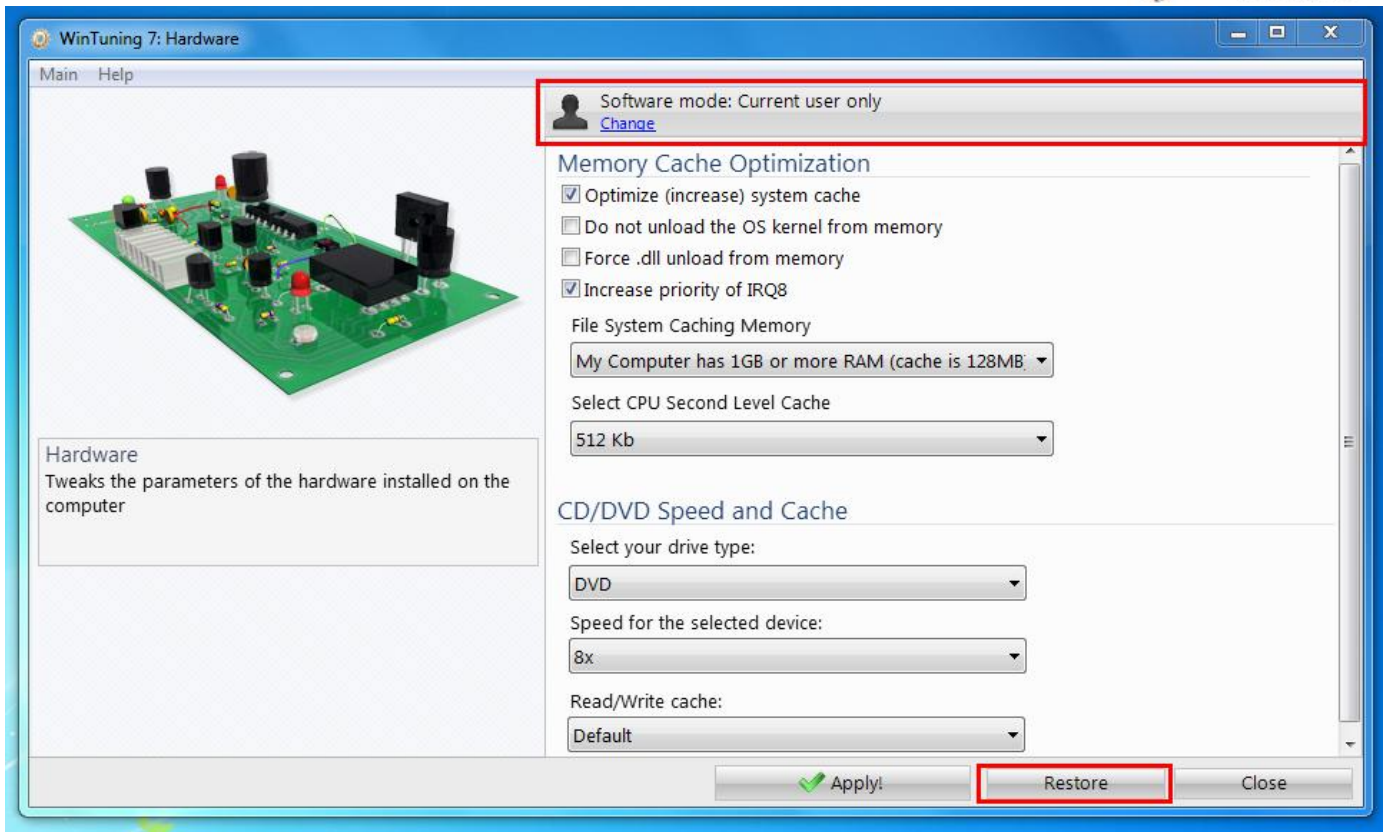
The program constantly scans your OS and checks the status of Windows 7 to keep your system in stable state.

Reset tweaks



WinTuning 7 provides the tool to reset all OS tweaks to its original values. This is useful when you change a lot of tweaks, but the system is not working as you planned. And if you don't remember which tweaks you have changed. After you reset tweaks, the parameters of your OS will be restored, but settings of other programs and your personal files will not be affected. This function allows you to "soft" roll back to default values without the use of "brute" recovery system that restores the entire OS, not just its parameters.

You can restore the original values of all tweaks with built-in OS Tweaks Reset System. To start the OS tweaks restore system, click "Restore" in the tweaks window. After that a window "OS Tweaks Reset System" will appear.



Please select the tweaks search area (settings) of the “Tweaks Area Search” group:

- Current section – tweaks which are in the section from which reset system is run, will be displayed in the list of tweaks;
- All sections – all tweaks of all sections of the program will be displayed in the list of tweaks.

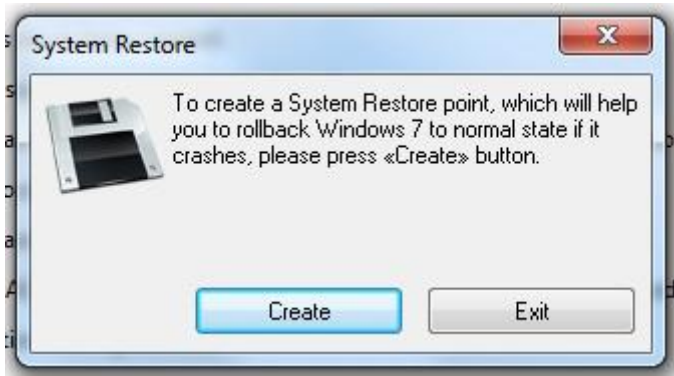
There are 4 columns in the list of tweaks: category, titles of tweaks and its values for the current user and for all users.

You can perform the following operations with the checked tweaks (with the ones that have enabled checkbox in front of title):

- Reset – resets all values to its original state;
- Save – saves all the values of the tweaks to a file for later use or for apply on the same or another computer;
- Load – loads a previously saved file with values of tweaks and applies it.

At the bottom of the window the log (archive of all tool procedures) is displayed. The number of displayed tweaks in the list is on top right.

System restore



WinTuning 7 provides the function to create a system restore point. System Restore is the function to roll back the changes made to the system by a program. It backs to the state when the OS is loading. This time is called "restore point". This saves a copy of the most important files that affect important parameters of the system and may affect the loading, stability and performance. Your personal files (music, movies, documents) will NOT be affected. *Note:* if you roll back to a restore point some programs that were installed after the creation of restore points might not work. Creating a system restore point is the most effective way to get a stable operating system.

To create a System Restore point with WinTuning 7, click "System Restore" in the main window of the program in a "Windows 7 Status" area. It opens the "System Restore" window. Click "Create". After that please wait 30-40 seconds: during this time a restore point is creating (do not close the System Restore window until the process of creating a restore point is ended).

To restore your OS to any previously created restore point, run the Windows 7 Control Panel utility "System Restore" and follow the onscreen instructions.

Error report



To run the "Error Report" utility please click "Found an error?" link at the bottom of the main window of WinTuning 7 (see section "[Main window](#)" of this reference, Additional buttons area). Also every utility has "Found an error?" submenu in Help item.

Since every computer is different due to different hardware and software configuration, producing a bug free software is almost impossible without an extensive beta test, and even with such tests, no software product will ever be completely bug free. You could help us producing a good product by submitting as many bugs you might find within WinTuning 7. Please report application crashes and all other issues, suggestions etc by this form.

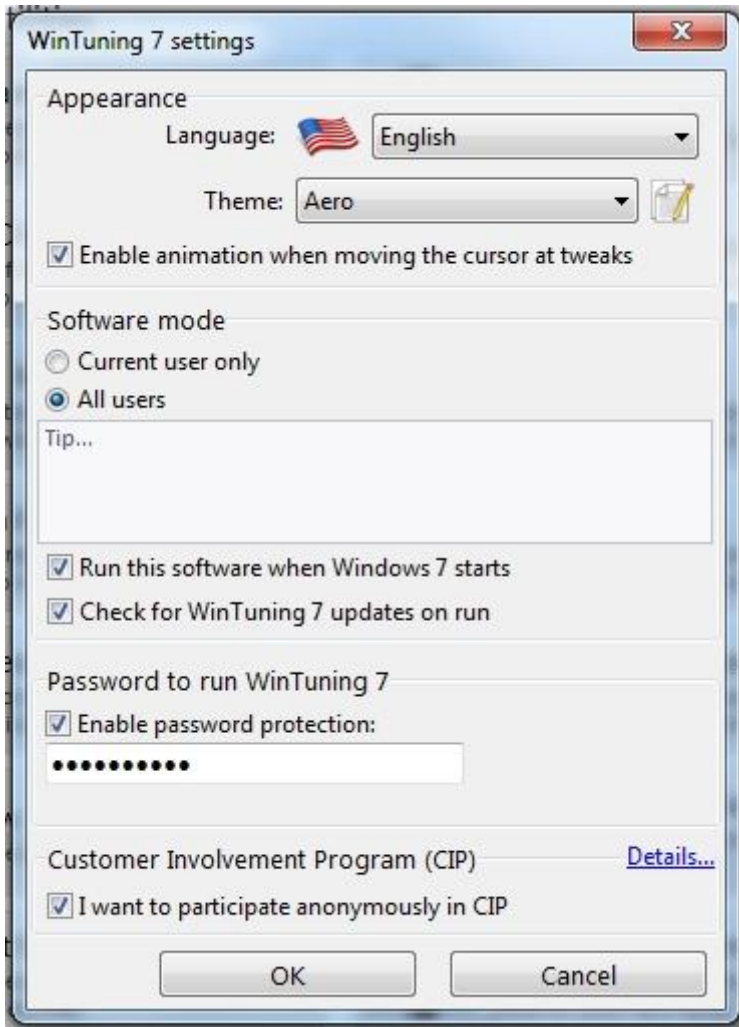
To send an error message, please do the following 5 steps (despite the fact that not all items are required, we will be able to provide the quality support only when we have the most complete information about the error occurring).

1. «Error type». Please choose one of the followings:
 - *An application function (tweak) does not work;*
 - *Interface error;*
 - *Grammar mistakes;*
 - *Other errors;*
 - *Improvement suggestions.*
2. «Comment». Specify what was you doing before the error occurred.

3. «Include information to the report about» (select the checkboxes that are might be helpful to fix the error):
 - *Windows 7 (extended)*;
 - *Installed hardware*;
 - *Installed services*;
 - *Installed software*;
 - *Running processes*.
4. «Contact information for feedback (optional)». If your message requires support, or any feedback, please leave your contacts here.
5. «Attach image-screenshot to the error report (optional)». Specify the full path to the image, which displays an error (or click "Browse" to navigate through the files of your computer). To take a screen shot, click on "Take a screen shot" to run the application "Scissors", included with Windows 7. With this application you can take a snapshot of the entire screen or just part of it and save it to a folder on the disk. Then you can specify this file as the screenshot, which will be sent to customer support.

After specifying all required information please click "Send" button to send an error message to CWTuning Software support team. The function of the information sending will be accessed via the website <http://cwtuning.com> (English version of the official website of WinTuning 7). You need the Internet access to get this function.

Software settings



To open a program settings window, click on "Settings" button at the bottom of the main window (see "Main window" section in this reference, additional buttons area).

There are four groups of program options:

- «Appearance» – interface is configured here. You can select the language of interface elements: English, Russian. «Enable animation when moving the cursor at tweaks» – in some utilities such as «[Hardware](#)», «[Security](#)», «[Internet Optimization](#)», «[Loading Configuration](#)», «[Desktop](#)», «[Window](#)», «[Start Menu and Taskbar](#)» and «[Explorer](#)» when you move the mouse pointer to some of tweaks a image-tip instead of logos is appeared. Moreover, the appearing process might be animated (smooth transition from one image to another) or instantly.

- «Software Mode» - in this area you can change the mode of the program (see this reference «[Software modes](#)»), as well as enable and disable automatic update checking of WinTuning 7 when the program starts. The query will be sent to the site <http://cwtuning.com> (English version of the official website of WinTuning 7) to check for online availability of the new version. If such version is available for download, the program will offer to download it. If you do not want to see messages, simply uncheck the box «Check for WinTuning 7 updates on run». If you want to start WinTuning 7 automatically every time when Windows 7 starts, enable the checkbox «Run this software when Windows 7 starts».

- «Password to run WinTuning 7» - because anyone who has access to the computer can change system settings through WinTuning 7, then you might want to ban this kind of behavior (for example, if you are a parent or administrator). When the password is enabled a window for entering a password is shown when the program starts. If no password is entered, the main window will not be shown. To enable password protection please enable the checkbox "Enable password protection" and enter your password. After the setting the password you must set up the email-address, in case you forget the password (see this reference [«Password Recovery»](#)). To disable password protection uncheck «Enable password protection» and click «OK» (after this you will need to confirm your action by entering the correct password). If the password is set, two new links will appear to quickly change the password and recovery-email. To perform these two operations, click the link «Change the password» or «Change the Reset System e-mail» respectively. This will bring up a window where you will be able to enter the new password or new email.

- «Customer Involvement Program (CIP)» - The [Customer Involvement Program](#) is a program that dramatically improves the way CWTuning Software designs software and measures product performance and quality. It provides a way for customers to become involved in helping make CWTuning Software products meet their needs better. You can join and leave CIP at any time. To do that press «Settings» button at the bottom of the main window of WinTuning 7 and check/uncheck «I want to participate anonymously in CIP». To see additional important information about the CIP, its use, the nature of the data collected and the confidentiality agreement, click on the link below. Let's make WinTuning 7 better... Together!

<http://cwtuning.com/windows-7-optimization-cip.htm>.

Program settings are saved only when you press the «OK» button. When you close the window by any other ways the changes will not be saved.

Icon in the Notification area (tray)

You can start any utility included to software (see «[WinTuning 7 Utilities](#)» and «[Windows 7 Utilities](#)» sections of this guide) using the icon in the notification area (system tray near the clock).

In addition to the utilities, the icon in the notification area contains the following items:

- ➡ *Main Window* - displays the main window of the program.
- ➡ *Additional* - contains items similar to additional buttons (see "Main window" section of this manual).
- ➡ *Exit* - closes the program (unload it from memory)..

Password recovery

If you cannot run WinTuning 7 due to the fact that you have forgotten the password, which is set to run the program, do the following:

1. Start WinTuning 7, after which a window for entering a password and a link "Forgot?" is shown.
2. Click on the link "Forgot?". It opens the window to reset the password (password recovery is impossible, it can only be removed if you have access to your email).
3. Enter your email (into the first field), which is set as the e-mail address for password recovery (see this reference, "Setting" section) and press the first «OK» button. As a result, email-address to reset your password will be sent with a special activation code (NOT your password), which must be entered in the second field. Example of email message that containing the activation code:

=====
Hello!

You have used WinTuning 7 Password Reset System. Feedback email is not monitored, so please dont reply this message.

=====

Your activation code:

000000

=====

Best regards, CWTuning Software Support Team

<http://www.cwtuning.com>

=====

4. Enter the activation code in the second field and click the second «OK» button. After this the password will be removed, the password protection is disabled, and you can run the program without entering a password. If necessary, you can set a different password after all of that.

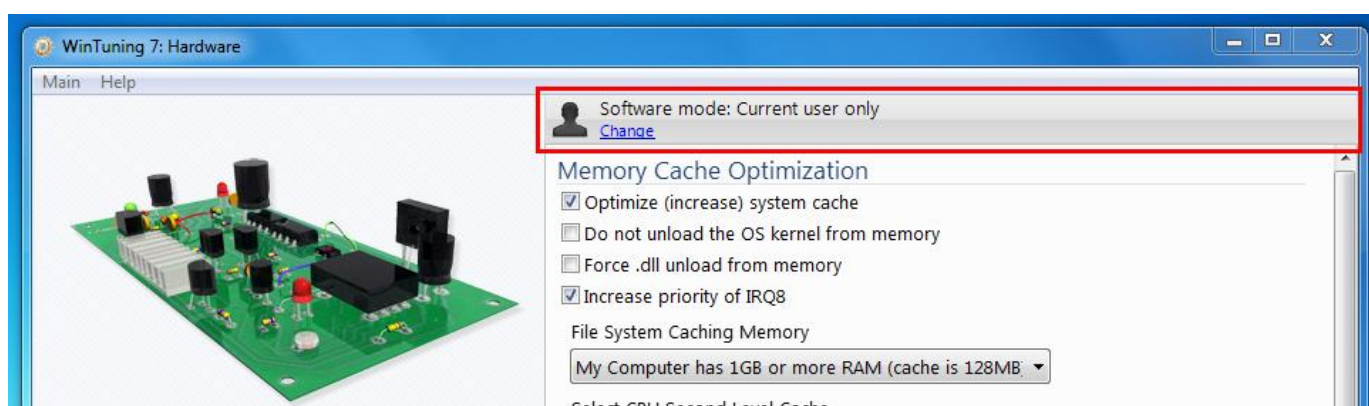
If you do not know the recovery-email, and if you forgot your password for the program, unfortunately we cannot help you.

Software modes



By default, all tweaks of «[Hardware](#)», «[Security](#)», «[Internet Optimization](#)», «[Loading Configuration](#)», «[Desktop](#)», «[Window](#)», «[Start Menu and Taskbar](#)» and «[Explorer](#)» affect only the current user, i.e. the user who is currently in the system and who changes the parameters in the program. Parameters of other users (accounts) are not changed. To change parameters of all users who can work with this computer (not just active user, but all of them), please open the settings window (see the «[Software setting](#)» section of this Reference), and then in the "Software Mode" group choose "All users" (do not forget to click «OK» button to save the changes). After this all the tweaks of WinTuning 7 will affect the parameters of all users. To change it back you must select "Current user only" mode. Please note that some of tweaks affect the parameters of all users (or active user only), regardless of which mode is selected. In this case these parameters have special comment at the end of its tips.

Note: The "All users" mode affects not only existing user accounts, but also all accounts that will be created in the future.



You can change software mode in OS tweaks windows by clicking so-named button at top of the window.

Frequently asked questions (FAQ)

1. Is tech support free?

Yes! It's free for all.

2. How much is it?

You can find the pricelist at the Web: <http://cwtuning.com/windows-7-optimization-order.htm>.

3. Can I get WinTuning 7 updates free?

Yes, you can. If you are a registered user, you have the license to use a life-time upgrade for WinTuning 7 absolutely free!

4. Is your online order form secure?

Yes, it is 100% secure. You enter your data to the fields of the HTTP Secure (begin with https://) protocol.

5. Will tweaks of WinTuning 7 be active if I uninstall WinTuning 7?

Yes. All changes with tweaks made in WinTuning 7 in Your OS do work even if you uninstall WinTuning 7.

6. Does WinTuning 7 contain Advertising Technologies or Spyware?

No. WinTuning 7 does not contain advertising technologies or spyware.

7. Can WinTuning 7 damage my hardware?

No, that is impossible since WinTuning 7 does tune Windows registry settings only - it does not touch your hardware at all. It does not overclock or change your physical hardware and/or driver settings.

8. How can I translate WinTuning 7 to my language, if my language is not currently included with WinTuning 7?

Steps to create a new set of language files for WinTuning 7:

- The language file has *.lng file extension
- The language file can be found in the 'Lang' sub folder of the WinTuning 7 installation folder
- The language file is simple text file which can be edited with any text file editor, like Notepad or similar
- The language file must be placed into the sub folders mentioned above. If you place them somewhere else, WinTuning 7 will not find them!

9. Certain features might not work as expected - what am I doing wrong?

It is possible that you have the new Windows User Account Control activated. UAC is known to interfere with some of WinTuning 7 features. If you encounter a problem, or a malfunction of a WinTuning 7 feature, please check your UAC settings. If UAC is enabled,

please disable it, reboot your machine, and check if the problem has disappeared. If not, please tell us about it by sending an email:

<http://cwtuning.com/windows-7-optimization-support.htm>.

It is also possible that software installed and/or active running on your system prevents WinTuning 7 from enabling certain Windows 7 registry tweaks. Such applications can be Anti Virus and Anti Spyware applications since they can block programs from modifying the Windows registry. Please do disable such programs if you encounter a strange behavior of WinTuning 7.

10. Will Autoshutdown function be active If I close WinTuning 7, instead of minimize it to tray?

No. Autoshutdown function works only while WinTuning 7 is running.

11. I connect to the Internet, but WinTuning 7 Update shows me an error: "Timeout while connecting to the Internet". How can I fix that?

It seems you are using firewall while connecting to WinTuning 7 server. Firewall may block WinTuning. Please allow inside/outgoing connections with Internet for WinTuning (website cwtuning.com). It uses HTTP-protocol (port is 80).

12. I found an error in program and want to share information about it with authors. How can I do this?

Please go to a feedback page and send us detailed message about error occurred:
<http://cwtuning.com/windows-7-optimization-support.htm>.

How to get the license for WinTuning 7



We give you a trial period to test the fully functional version of WinTuning 7 within 30 days. After this period you need to license the program for future use.

To obtain a license you must have a license key (information included three components: name, email and license code) to be entered into the license window of the software.



You can pay for the license by Visa, MasterCard, Paypal, Bank transfer etc with our partner Plimus.



To get your license key, please visit the page: <http://cwtuning.com/windows-7-optimization-order.htm>. On the webpage, please select your preferred payment method and enter the information for ordering. After you buy the license within 2 days (usually no longer than 3 hours) you will get on your email address the license information and further instructions on how to register.

You must enter the license information in the fields of the "Welcome" window, i.e. the first window of the program. Also you can open the "Welcome" window from the main program window by clicking on the "Register" button.

To enter the information you must click the "Register" link. Three fields will be shown: name, email and license code. After entering the name and email (it must be entered exactly as it is in the email message with the registration information, but without the quotes), copy the license code to the clipboard (highlight the code and press the Ctrl + C key combination). After that, click "Paste the license code from the clipboard" - the license code will be entered automatically in all four fields.

📄 License for WinTuning 7 (2 PCs) and Order Information 🖨️

CWTuning Software Team

Dear, John Johnson,

Thank you for your purchase of WinTuning 7 Mobile (2 PCs).

[Your licensing information]

[LICENSE 1]

Name: "John Johnson PC1"

email: "JohnJohnson@gmail.com"

License code: "[AbcD123-eFGh456-IjklM789-NOpQ01](#)"

[LICENSE 2]

Name: "John Johnson PC2"

email: "JohnJohnson@gmail.com"

License code: "rSTuV234-WxyZ567-aBcD890-EfGh123"

You should enter this data (WITHOUT the quotes) to the first window of WinTuning 7 on each computer where the program is installed.

[Information about the software]

Name: WinTuning 7 (Mobile 2 PCs) (lifetime upgrade);

Shipping: send the license code to the e-mail (JohnJohnson@gmail.com);

Number of licenses: 2;

Should you have any questions please contact us at: support@cwtuning.com

Sincerely, Alex,

CWTuning Software Support Team

support@cwtuning.com

www.cwtuning.com



Once you have finished entering registration information, click the "Register" button. If you do all right the OK message appears and you have to restart the program. After the registration, when the program starts you will not see the "Welcome" window anymore and you can use the program as long as you want.

Do these steps on each computer you want to WinTuning 7 licensed version be installed. To view information about the license please open the "About" window of the program (the button in the main window or submenu in the "Help" main menu of utilities).

Contacts

You can visit us at the Internet to get more information about our products, its prices, and to get support: <http://cwtuning.com/windows-7-optimization-index.htm>.

Before contacting us, please check the product FAQ website, as most of the common problems are listed there. Thank you!

Some information and guidelines for your support request:

- Please write in English only - we do not offer support in any other language;
- We do offer support for our products only. We do not offer any general support for problems with Windows, or any other third party software product. Such support requests will remain unanswered;
- We do need a detailed description of your problem in order to offer support and to answer your request. If you do not include enough details to describe your problem, we cannot answer your request.

The feedback form of CWTuning Software support is placed at:
<http://cwtuning.com/windows-7-optimization-support.htm>.

Customer Involvement Program

Let us know what is important to you!

The Customer Involvement Program is a program that dramatically improves the way CWTuning Software designs software and measures product performance and quality. It provides a way for customers to become involved in helping make CWTuning Software products meet their needs better.

You can join and leave CIP at any time. To do that press "Settings" button at the bottom of the main window of WinTuning 7 and check/uncheck "I want to participate anonymously in CIP". To see additional important information about the CIP, its use, the nature of the data collected and the confidentiality agreement, click on the link: <http://cwtuning.com/windows-7-optimization-cip.htm>.

Let's make WinTuning 7 better... Together!

Privacy statement of CIP you can find here: <http://cwtuning.com/windows-7-optimization-cip-privacy-statement.htm>.

Terms of Use

Software Product: WinTuning 7 for Windows® 7

Version: v2.xx

Author: CWTuning Software

Internet: <http://www.cwtuning.com>

Note: This software was designed for Windows® 7 only

SOFTWARE LICENSE AGREEMENT AND DISCLAIMER FOR THIS SOFTWARE

IMPORTANT - READ THESE TERMS CAREFULLY

GOOD DATA PROCESSING PROCEDURE DICTATES THAT ANY PROGRAM BE THOROUGHLY TESTED WITH NON-CRITICAL DATA BEFORE RELYING ON IT. THE USER ASSUMES THE ENTIRE RISK OF USING THIS SOFTWARE.

BY DOWNLOADING OR USING ANY SOFTWARE PRODUCT FROM CWTUNING SOFTWARE, YOU ACKNOWLEDGE THAT YOU HAVE READ THIS LICENSE AGREEMENT, THAT YOU UNDERSTAND IT, AND THAT YOU AGREE TO BE BOUND BY ITS TERMS. IF YOU DO NOT AGREE TO THE TERMS AND CONDITIONS OF THIS LICENSE AGREEMENT, PROMPTLY UNINSTALL THE SOFTWARE FROM YOUR SYSTEM. THE SOFTWARE PROVIDED HEREUNDER WILL EXPIRE AND NOT OPERATE AFTER A SPECIFIC AMOUNT OF DAYS OR USES FROM INSTALLATION. THE PURCHASE OF A SOFTWARE KEY IS REQUIRED FOR USE OF THE SOFTWARE AFTER THE TRIAL PERIODS.

• Grant of License for Registered Users

CWTuning Software, grants you a non-exclusive, non-transferable license to use the program with which this license is distributed (the "[PRODUCT]"), including any documentation files accompanying the Software ("User Guide") on a single server (if the Software is server based) or personal computer to support up to the number of simultaneous users for which you have paid the license fee, and to make one backup copy of the Software, provided that: (I) the Software is installed on only one server or personal computer; (II) the Software is NOT modified; (III) all copyright notices are maintained on the Software; and (IV) you agree to be bound by the terms of this License Agreement. The Software and Documentation shall be used only by you, only for your own personal or internal business use and not in the operation of a service bureau or for the benefit of any other person or entity.

• Definition of 'Single User License'

A 'Single User License' is a non-transferable license, which permits the purchaser to install the software product on a single PC for use by a single user. Duplication, sharing, multiple installations and/or electronic transmission of a license file or serial number are in violation of this license agreement and international conventions copyright. With a valid Single-User license key or license file, the Product may be unlocked on a single computer workstation. If a registered user later wants to install the Product on a different workstation, the user must first remove the Single-User license key from the previous installation, or purchase additional licenses.

• Ownership

You have no ownership rights in the Software. Rather, you have a license to use the Software as long as this License Agreement remains in full force and effect. Ownership of the Software, Documentation and all intellectual property rights therein shall remain at all times with CWTuning Software. Any other use of the Software by any person, business, corporation, government organization or any other entity is strictly forbidden and is a violation of this License Agreement.

• Copyright

The Software and Documentation contain material that is protected by Russian Copyright Law and trade secret law, and by international treaty provisions. All rights not granted to you herein are expressly reserved by CWTuning Software. You may not remove any proprietary notice of CWTuning Software from any copy of the Software or Documentation.

• Restrictions

You may not publish, display, disclose, rent, lease, modify, loan, distribute, or create derivative works based on the Software or any part thereof. You may not reverse engineer, decompile, translate, adapt, or disassemble the Software, nor shall you attempt to create the source code from the object code for the Software. You may not transmit the Software over any network or between any devices, although you may use the Software to make such transmissions of other materials. You may transfer the Software to other computers you own as long as you only use it on one computer at a time.

- Confidentiality

You acknowledge that the Software contains proprietary trade secrets of CWTuning Software and you hereby agree to maintain the confidentiality of the CWTuning Software using at least as great a degree of care as you use to maintain the confidentiality of your own most confidential information. You agree to reasonably communicate the terms and conditions of this Software License Agreement to those persons employed by you who come into contact with the Software, and to use reasonable best efforts to ensure their compliance with such terms and conditions, including, without limitation, not knowingly permitting such persons to use any portion of the Program for the purpose of deriving the source code of the Program or defeating the Key.

- Limited Warranty

ANY USE BY YOU OF THE SOFTWARE IS AT YOUR OWN RISK. THIS LIMITED WARRANTY IS THE ONLY WARRANTY PROVIDED BY CWTUNING SOFTWARE REGARDING THE SOFTWARE. EXCEPT FOR THE LIMITED WARRANTY ABOVE, THE SOFTWARE IS PROVIDED "AS IS." TO THE MAXIMUM EXTENT PERMITTED BY LAW, CWTUNING SOFTWARE DISCLAIMS ALL OTHER WARRANTIES OF ANY KIND, EITHER EXPRESSED OR IMPLIED, INCLUDING, WITHOUT LIMITATION, IMPLIED WARRANTIES OF MERCHANTABILITY AND FITNESS FOR A PARTICULAR PURPOSE. CWTUNING SOFTWARE DOES NOT WARRANT THAT THE FUNCTIONS CONTAINED IN THE SOFTWARE WILL MEET ANY REQUIREMENTS OR NEEDS YOU MAY HAVE, OR THAT THE SOFTWARE WILL OPERATE ERROR FREE, OR IN AN UNINTERRUPTED FASHION, OR THAT ANY DEFECTS OR ERRORS IN THE SOFTWARE WILL BE CORRECTED, OR THAT THE SOFTWARE IS COMPATIBLE WITH ANY PARTICULAR PLATFORM.

- Limitation of Liability

IN NO EVENT WILL CWTUNING SOFTWARE BE LIABLE TO YOU OR ANY THIRD PARTY FOR ANY INCIDENTAL OR CONSEQUENTIAL DAMAGES (INCLUDING, WITHOUT LIMITATION, INDIRECT, SPECIAL, PUNITIVE, OR EXEMPLARY DAMAGES FOR LOSS OF BUSINESS, LOSS OF PROFITS, BUSINESS INTERRUPTION, OR LOSS OF BUSINESS INFORMATION) ARISING OUT OF THE USE OF OR INABILITY TO USE THE PROGRAM, OR FOR ANY CLAIM BY ANY OTHER PARTY, EVEN IF CWTUNING SOFTWARE HAS BEEN ADVISED OF THE POSSIBILITY OF SUCH DAMAGES. CWTUNING SOFTWARE'S AGGREGATE LIABILITY WITH RESPECT TO ITS OBLIGATIONS UNDER THIS AGREEMENT OR OTHERWISE WITH RESPECT TO THE SOFTWARE AND DOCUMENTATION OR OTHERWISE SHALL NOT EXCEED THE AMOUNT OF THE LICENSE FEE PAID BY YOU FOR THE SOFTWARE AND DOCUMENTATION.

- Export Restrictions

THIS LICENSE AGREEMENT IS EXPRESSLY MADE SUBJECT TO ANY LAWS, REGULATIONS, ORDERS, OR OTHER RESTRICTIONS ON THE EXPORT FROM RUSSIA OF THE SOFTWARE OR INFORMATION ABOUT SUCH SOFTWARE WHICH MAY BE IMPOSED FROM TIME TO TIME BY THE GOVERNMENT OF RUSSIA. YOU SHALL NOT EXPORT THE SOFTWARE, DOCUMENTATION, OR INFORMATION ABOUT THE SOFTWARE AND DOCUMENTATION WITHOUT CONSENT OF CWTUNING SOFTWARE AND COMPLIANCE WITH SUCH LAWS, REGULATIONS, ORDERS, OR OTHER RESTRICTIONS.

- Termination

This License Agreement is effective until it is terminated. You may terminate this License Agreement at any time by destroying or returning to CWTuning Software all copies of the Software and Documentation in your possession or under your control. CWTuning Software may terminate this License Agreement for any reason, including, but not limited to, if CWTuning Software finds that you have violated any of the terms of this License Agreement. Upon notification of termination, you agree to destroy or return to CWTuning Software all copies of the Software and Documentation and to certify in writing that all known copies, including backup copies, have been destroyed. All provisions relating to confidentiality, proprietary rights, and non-disclosure shall survive the termination of this Software License Agreement.

- Notes

CWTuning Software may be interpreted as owner of it. It means that CWTuning Software may be interpreted as Ivan Saldikov.

- General

This License Agreement shall be construed, interpreted and governed by the laws of RUSSIA without regard to conflicts of law provisions thereof. The exclusive forum for any disputes arising out of or relating to this License Agreement shall be an appropriate court sitting in MOSCOW, RUSSIA. This License Agreement shall constitute the entire Agreement between the parties hereto. Any waiver or modification of this License Agreement shall only be effective if it is in writing and signed by both parties hereto. If any part of this License Agreement is found invalid or unenforceable by a court of competent jurisdiction, the remainder of this License Agreement shall be interpreted so as to reasonably effect the intention of the parties.